

## กองทุนเปิด ยูโนเต็ด แบตเตอรี่ แอนด์ อีวี เทคโนโลยี ฟันด์ (UEV-M)

หน่วยลงทุนชนิดเพื่อผู้ลงทุนทั่วไป

UEV

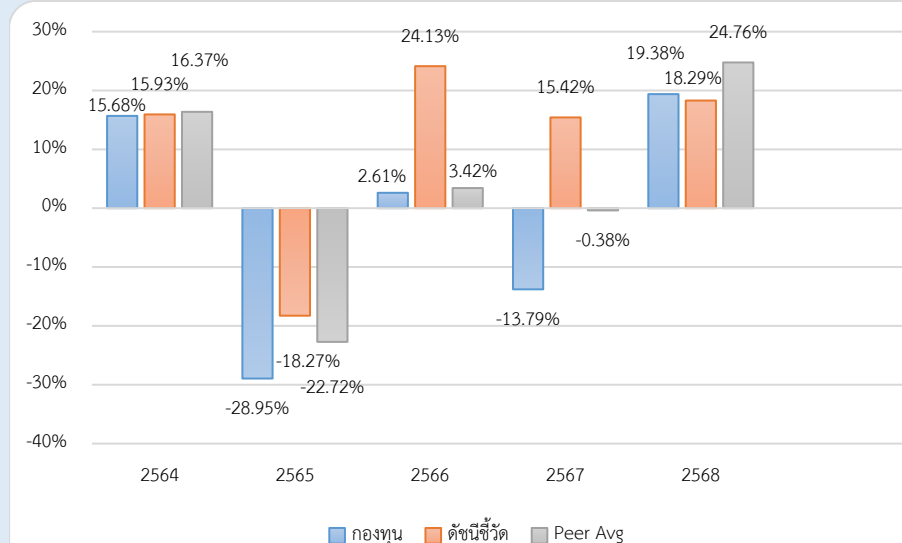
### ประเภทกองทุนรวม / กลุ่มกองทุนรวม

- กองทุนรวมตราสารทุน
- Fund of Funds / กองทุนที่เน้นลงทุนแบบมีความเสี่ยงต่างประเทศ
- กลุ่ม Other Global Sector Equity

### นโยบายและกลยุทธ์การลงทุน

- ลงทุนในหน่วยลงทุนของกองทุนรวมต่างประเทศ และ/หรือกองทุนรวมอีทีเอฟ (ETF) ที่มีนโยบายการลงทุนในหลักทรัพย์ที่ดำเนินธุรกิจที่เกี่ยวข้องกับสายการผลิตแบตเตอรี่
- กองทุนอาจพิจารณาลงทุนใน Derivatives เพื่อเพิ่มประสิทธิภาพการบริหารการลงทุน
- มุ่งหวังให้ผลประกอบการสูงกว่าดัชนีชี้วัด (active management)

### ผลการดำเนินงานและดัชนีชี้วัดย้อนหลัง 5 ปีปฏิทิน



### ผลการดำเนินงานย้อนหลังแบบปักหมุด (%)

	YTD	3 เดือน	6 เดือน	1 ปี*
กองทุน	19.38	0.49	11.46	19.38
ดัชนีชี้วัด	18.29	3.05	9.75	18.29
ค่าเฉลี่ยในกลุ่มเดียวกัน	24.76	2.16	14.97	24.76
ความผันผวนกองทุน	23.92	9.87	11.58	24.46
ความผันผวนดัชนีชี้วัด	15.12	5.51	6.82	15.47
	3 ปี*	5 ปี*	10 ปี*	ตั้งแต่จัดตั้ง*
กองทุน	1.83	-	-	-2.91
ดัชนีชี้วัด	19.21	-	-	10.38
ค่าเฉลี่ยในกลุ่มเดียวกัน	7.38	-	-	-
ความผันผวนกองทุน	21.03	-	-	21.64
ความผันผวนดัชนีชี้วัด	11.48	-	-	14.15
หมายเหตุ : * % ต่อปี				

### ระดับความเสี่ยง

ต่ำ 1 2 3 4 5 6 7 8 สูง

เสี่ยงสูง

ลงทุนในตราสารทุนเป็นหลักโดยเฉลี่ยในรอบปี  
ไม่น้อยกว่า 80% ของ NAV

### ข้อมูลกองทุนรวม

วันจดทะเบียนกองทุน	16 มี.ค. 2564
วันเริ่มต้น class	16 มี.ค. 2564
นโยบายการจ่ายเงินปันผล	ไม่จ่าย
อายุกองทุน	ไม่กำหนด

### ผู้จัดการกองทุนรวม

นาย วิจิตร รัตนสิงห์	วันเริ่มบริหารกองทุน
	13 พ.ค. 2568

### ดัชนีชี้วัด

MSCI World Net Total Return USD Index ปรับด้วยต้นทุน  
การป้องกันความเสี่ยงอัตราแลกเปลี่ยนเพื่อเทียบค่าสกุลเงินบาท  
ณ วันที่คำนวณผลตอบแทน (100%)

### หมายเหตุ :

กองทุนใช้ตัวชี้วัดดังกล่าว โดยมีวัตถุประสงค์เพื่อเปรียบเทียบ  
ระหว่างดัชนีชี้วัดและผลการดำเนินงานของกองทุนรวม

### คำเตือน

- การลงทุนในกองทุนรวมไม่ใช่การฝากเงิน
- ผลการดำเนินงานในอดีตของกองทุนรวม มิได้เป็นสัญญานยืนยันถึง  
ผลการดำเนินงานในอนาคต

การเข้าร่วมต่อต้านทุจริต : ได้ประกาศเจตนารมณ์เข้าร่วม CAC

หนังสือชี้ชวนฉบับเต็ม



“ผู้ลงทุนสามารถศึกษาเครื่องมือ  
บริหารความเสี่ยงด้านสภาพคล่อง  
ได้ในหนังสือชี้ชวนฉบับเต็ม”

www.uobam.co.th

การซื้อขายหน่วยลงทุน		การขายคืนหน่วยลงทุน		ข้อมูลเชิงสถิติ	
วันทำการซื้อ: ทุกวันทำการ		วันทำการขายคืน: ทุกวันทำการ		Maximum Drawdown	-52.64 %
เวลาทำการ: 08:30 - 15:30 น.		เวลาทำการ: 08:30 - 14:00 น.		Recovering Period	-
การซื้อครั้งแรกขั้นต่ำ: ไม่กำหนด		การขายคืนขั้นต่ำ: ไม่กำหนด		FX Hedging	93.38 %
การซื้อครั้งถัดไปขั้นต่ำ: ไม่กำหนด		ยอดคงเหลือขั้นต่ำ: ไม่กำหนด		Sharpe Ratio	0.08
		ระยะเวลาการรับเงินค่าขายคืน: T+4 วันทำการ		Alpha	-17.38
		หลังจากวันทำการขายคืน		Beta	0.89
หมายเหตุ :ระยะเวลาการรับเงินค่าขายคืน ยังมีได้นับรวมวันหยุดทำการในต่างประเทศ				อัตราส่วนหมุนเวียนการลงทุน	0.17 เท่า

ค่าธรรมเนียมที่เรียกเก็บจากกองทุนรวม (% ต่อปีของ NAV รวม VAT)		
ค่าธรรมเนียม	สูงสุดไม่เกิน	เก็บจริง
การจัดการ	2.1400	1.6050
รวมค่าใช้จ่าย	5.3500	1.8588
ค่าตอบแทนที่ได้รับจากบริษัทจัดการต่างประเทศ (Rebate fee) = 0.2000% ของ NAV		
หมายเหตุ : บริษัทจัดการอาจพิจารณาเปลี่ยนแปลงค่าธรรมเนียมที่เรียกเก็บจริงเพื่อให้สอดคล้องกับกลยุทธ์หรือค่าใช้จ่ายในการบริหารจัดการ		

ค่าธรรมเนียมที่เรียกเก็บจากผู้ถือหน่วย (% ของมูลค่าหน่วยลงทุน รวม VAT)		
ค่าธรรมเนียม	สูงสุดไม่เกิน	เก็บจริง
การขาย	2.00	1.50
การรับซื้อคืน	2.00	ยกเว้น
การสับเปลี่ยนหน่วยลงทุนเข้า	2.00	1.50
การสับเปลี่ยนหน่วยลงทุนออก	2.00	ยกเว้น
การโอนหน่วย	10 บาท/500 หน่วย	ยกเว้น
หรือเศษของ 500 หน่วย		
หมายเหตุ :		
1. กรณีสับเปลี่ยนเข้า บลจ.จะไม่คิดค่าธรรมเนียมการขาย		
2. บริษัทจัดการอาจพิจารณาเปลี่ยนแปลงค่าธรรมเนียมที่เรียกเก็บจริงเพื่อให้สอดคล้องกับกลยุทธ์หรือค่าใช้จ่ายในการบริหารจัดการ		
3. บริษัทจัดการอาจคิดค่าธรรมเนียมที่เรียกเก็บจากผู้ถือหน่วยกับผู้สั่งซื้อหรือผู้ถือหน่วยลงทุน แต่ละกลุ่มหรือแต่ละคนไม่เท่ากันได้		

สัดส่วนประเภททรัพย์สินที่ลงทุน		ทรัพย์สินที่ลงทุน 5 อันดับแรก	
breakdown	% NAV	holding	% NAV
1. หน่วยลงทุนของกองทุนระหว่างประเทศ	96.46	1. หน่วยลงทุน : Robeco Smart Mobility I USD	49.30
2. อื่น ๆ	3.54	2. หน่วยลงทุน : Neuberger Berman Next Generation Mobility Fund - Class I USD Acc	47.15

## การลงทุนในกองทุนอื่นเกินกว่า 20% (กองในประเทศและกองต่างประเทศ)

ชื่อกอง : Neuberger Berman Next Generation Mobility Fund - Class I USD Acc

ISIN code : IE00BFY81J05

Bloomberg code : NBNGMIU ID Equity

ชื่อกอง : Robeco Smart Mobility I USD

ISIN code : LU2145466475

Bloomberg code : RSSMEIU LX

### คำอธิบาย

**Maximum Drawdown** : เปอร์เซ็นต์ผลขาดทุนสูงสุดของกองทุนรวมในระยะเวลา 5 ปี ย้อนหลัง (หรือตั้งแต่จัดตั้งกองทุนกรณีที่ยังไม่ครบ 5 ปี) โดยวัดจากระดับ NAV ต่อหน่วยที่จุดสูงสุดไปจนถึงจุดต่ำสุดในช่วงที่ NAV ต่อหน่วยปรับตัวลดลง ค่า Maximum Drawdown เป็นข้อมูลที่ช่วยให้ทราบถึงความเสี่ยงที่อาจจะขาดทุนจากการลงทุนในกองทุนรวม

**Recovering Period** : ระยะเวลาการฟื้นตัว เพื่อเป็นข้อมูลให้ผู้ลงทุนทราบถึงระยะเวลาดังแต่การขาดทุนสูงสุดจนถึงระยะเวลาที่ฟื้นกลับมาที่เงินทุนเริ่มต้นใช้ระยะเวลานานเท่าใด

**อัตราส่วนหมุนเวียนการลงทุน** : ความถี่ของการซื้อขายหลักทรัพย์ในพอร์ตกองทุนในช่วงเวลาใดช่วงเวลานึง

โดยคำนวณจากมูลค่าที่ต่ำกว่าระหว่างผลรวมของมูลค่าการซื้อขายหลักทรัพย์กับผลรวมของมูลค่าการขายหลักทรัพย์ของกองทุนรวมในรอบระยะเวลา 1 ปีหารด้วยมูลค่า NAV ของกองทุนรวมเฉลี่ยในรอบระยะเวลาเดียวกัน กองทุนรวมที่มีค่า portfolio turnover สูง บ่งชี้ถึงการซื้อขายหลักทรัพย์บ่อยครั้งของผู้จัดการกองทุนและทำให้มีต้นทุนการซื้อขายหลักทรัพย์ที่สูง จึงต้องพิจารณาเปรียบเทียบกับผลการดำเนินงานของกองทุนรวมเพื่อประเมินความคุ้มค่าของการซื้อขายหลักทรัพย์ดังกล่าว

**Sharpe Ratio** : อัตราส่วนระหว่างผลตอบแทนส่วนเพิ่มของกองทุนรวมเปรียบเทียบกับความเสี่ยงจากการลงทุน

โดยคำนวณจากผลต่างระหว่างอัตราผลตอบแทนของกองทุนรวมกับอัตราผลตอบแทนที่ปราศจากความเสี่ยง (risk-free rate) เปรียบเทียบกับค่าเบี่ยงเบนมาตรฐาน (standard deviation)

ของกองทุนรวม ค่า Sharpe Ratio สะท้อนถึงอัตราผลตอบแทนที่กองทุนรวมควรได้รับเพิ่มขึ้นเพื่อชดเชยกับความเสี่ยงที่กองทุนรวมรับมา โดยกองทุนรวมที่มีค่า Sharpe Ratio

สูงกว่าจะเป็นกองทุนที่มีประสิทธิภาพในการบริหารจัดการลงทุนที่ดีกว่า เนื่องจากได้รับผลตอบแทนส่วนเพิ่มที่สูงกว่าภายใต้ระดับความเสี่ยงเดียวกัน

**Alpha** : ผลตอบแทนส่วนเกินของกองทุนรวมเมื่อเปรียบเทียบกับดัชนีชี้วัด (benchmark) โดยค่า Alpha ที่สูง หมายถึง กองทุนสามารถสร้างผลตอบแทนได้สูงกว่าดัชนีชี้วัด

ซึ่งเป็นผลจากประสิทธิภาพของผู้จัดการกองทุนในการคัดเลือกหรือหาจังหวะเข้าลงทุนในหลักทรัพย์ได้อย่างเหมาะสม

**Beta** : ระดับและทิศทางการเปลี่ยนแปลงของอัตราผลตอบแทนของหลักทรัพย์ในพอร์ตการลงทุน โดยเปรียบเทียบกับอัตราการเปลี่ยนแปลงของตลาด Beta น้อยกว่า 1

แสดงว่าหลักทรัพย์ในพอร์ตการลงทุนมีการเปลี่ยนแปลงของอัตราผลตอบแทนน้อยกว่าการเปลี่ยนแปลงของอัตราผลตอบแทนของกลุ่มหลักทรัพย์ของตลาด Beta มากกว่า 1 แสดงว่า

หลักทรัพย์ในพอร์ตการลงทุนมีการเปลี่ยนแปลงของอัตราผลตอบแทนมากกว่าการเปลี่ยนแปลงของอัตราผลตอบแทนของกลุ่มหลักทรัพย์ของตลาด

**Tracking Error** : เพื่อให้พิจารณาความผันผวนของส่วนต่างของผลตอบแทนเฉลี่ยของกองทุนรวมและผลตอบแทนของดัชนีชี้วัด

ซึ่งสะท้อนให้เห็นถึงประสิทธิภาพในการเลียนแบบดัชนีชี้วัดของกองทุนรวมว่ามีการเบี่ยงเบนออกไปจากดัชนีชี้วัด มากน้อยเพียงใด เช่น หากกองทุนรวมมีค่า TE ต่ำ แสดงว่า

อัตราผลตอบแทนของกองทุนมีการเบี่ยงเบนออกไปจากดัชนีชี้วัดในอัตราที่ต่ำ ดังนั้น กองทุนรวมนี้จึงมีประสิทธิภาพในการเลียนแบบดัชนีอ้างอิง ในขณะที่กองทุนรวมที่มีค่า TE สูง

แสดงว่าอัตราผลตอบแทนของกองทุนรวมมีการเบี่ยงเบนออกจากดัชนีชี้วัดในอัตราที่สูง ดังนั้น โอกาสที่ผลตอบแทนการลงทุนจะเป็นไปตามผลตอบแทนของ benchmark ก็จะมีลดน้อยลง เป็นต้น

**Yield to Maturity** : อัตราผลตอบแทนจากการลงทุนในตราสารหนี้โดยถือจนครบกำหนดอายุ

ซึ่งคำนวณจากดอกเบี้ยที่จะได้รับในอนาคตตลอดอายุตราสารและเงินต้นที่จะได้รับคืนนำมาคิดลดเป็นมูลค่าปัจจุบัน โดยใช้วัดอัตราผลตอบแทนของกองทุนรวมตราสารหนี้

คำนวณจากค่าเฉลี่ยถ่วงน้ำหนักของ Yield to Maturity ของตราสารหนี้แต่ละตัวที่กองทุนมีการลงทุน และเนื่องจาก Yield to Maturity มีหน่วยมาตรฐานเป็นเปอร์เซ็นต์ต่อปี

จึงสามารถนำไปใช้เปรียบเทียบอัตราผลตอบแทนระหว่างกองทุนรวมตราสารหนี้ที่มีนโยบายถือครองตราสารหนี้จนครบกำหนดอายุและมีลักษณะการลงทุนที่ใกล้เคียงกันได้

บริษัทหลักทรัพย์จัดการกองทุน ยูโอบี (ประเทศไทย) จำกัด

ชั้น 23A, 25 อาคารเอเชียเซ็นเตอร์ เลขที่ 173/27-30, 31-33

ถนนสาทรใต้ แขวงทุ่งมหาเมฆ เขตสาทร กรุงเทพมหานคร 10120

โทรศัพท์ : 0-2786-2000

www.uobam.co.th

รายละเอียดและอันดับความน่าเชื่อถือของตราสารหนี้ ตราสารกึ่งหนี้กึ่งทุน หรือเงินฝากที่ลงทุนหรือมีไว้  
กองทุนเปิด ยูไนเต็ด แบริเตอร์ แอนด์ อีวี เทคโนโลยี ฟันด์

ณ วันที่ 30 ธันวาคม 2568

ผู้ออก/ผู้รับรอง/ผู้ค้ำประกัน	อันดับความน่าเชื่อถือ	มูลค่าตามราคาตลาด	%NAV
(ก) กลุ่มตราสารภาครัฐไทย และตราสารภาครัฐต่างประเทศ		0.00	0.00
(ข) กลุ่มตราสารของธนาคารที่มีกฎหมายเฉพาะจัดตั้งขึ้น ธนาคารพาณิชย์ หรือบริษัทเงินทุน เป็นผู้ออก ผู้ส่งจ่าย ผู้รับรอง		10,064,736.23	1.41
ธนาคารกสิกรไทย จำกัด (มหาชน)	AA+	10,064,736.23	1.41
(ค) กลุ่มตราสารที่มีอันดับความน่าเชื่อถืออยู่ในอันดับที่สามารถลงทุนได้		0.00	0.00
(ง) กลุ่มตราสารที่มีอันดับความน่าเชื่อถืออยู่ในอันดับต่ำกว่าอันดับที่ สามารถลงทุนได้ หรือไม่ได้รับการจัดอันดับความน่าเชื่อถือ		0.00	0.00
	รวมทั้งหมด	10,064,736.23	



# Neuberger Berman Next Generation Mobility Fund

28 November 2025

## FUND OBJECTIVE

The fund aims to increase the value of your shares over the long-term by investing in a portfolio of global equity holdings that are involved with or derive benefit from operating within the long-term trend of the proliferation of autonomous, electric and connected vehicles - Next Generation Mobility. The fund may invest in companies of any market capitalisation but shall typically invest in companies that have market capitalisation greater than USD 500 million at time of purchase.

The fund invests in securities that meet the criteria set out in the Sustainable Exclusion Policy, as detailed in the Prospectus.

## MANAGEMENT TEAM

**Hari Ramanan**

Senior Portfolio Manager

**Charlie Lim**

Co-Portfolio Manager

**Yan Taw Boon**

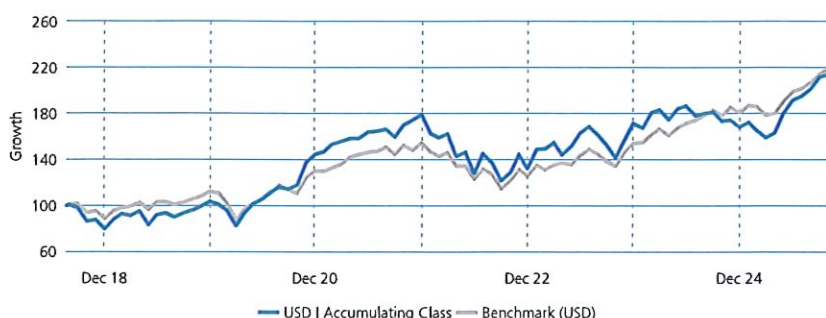
Co-Portfolio Manager

## FUND FACTS

Inception Date (Fund)	21 August 2018
Base Currency (Fund)	USD
Fund AUM (USD million)	102.98
Domicile	Ireland
Vehicle	UCITS
Valuation	Daily
Settlement (Subscription)	T+3
Trading Deadline	15:00 (Dublin Time)
Regulator	Central Bank of Ireland
Bmrk	MSCI All-Country World Index (ACWI) (Total Return, Net of Tax, USD)

## CUMULATIVE PERFORMANCE

Past performance does not predict future returns.



This chart shows how an investment of USD 100 in the fund on its inception date would have performed and compares it against how a hypothetical investment of USD 100 in the Benchmark(s) would have performed.

PERFORMANCE (%) <sup>1</sup>	1m <sup>2</sup>	3m <sup>2</sup>	YTD <sup>2</sup>	1y <sup>2</sup>	3y <sup>2</sup>	5y <sup>2</sup>	10y <sup>2</sup>	SI <sup>3,4</sup>
USD I Accumulating Class	-3.08	3.03	23.06	18.90	12.79	8.57	-	10.55
Bmrk (USD)	-0.01	5.93	21.07	18.21	18.64	11.97	-	11.40

12 MONTH PERIODS (%) <sup>1</sup>	Nov15 Nov16	Nov16 Nov17	Nov17 Nov18	Nov18 Nov19	Nov19 Nov20	Nov20 Nov21	Nov21 Nov22	Nov22 Nov23	Nov23 Nov24	Nov24 Nov25
USD I Accumulating Class	-	-	-	13.49	38.57	26.96	-17.17	8.98	10.72	18.90
Bmrk (USD)	-	-	-	13.68	15.01	19.27	-11.62	12.01	26.12	18.21

CALENDAR (%)	2016	2017	2018 <sup>5</sup>	2019	2020	2021	2022	2023	2024	2025 <sup>6</sup>
USD I Accumulating Class	-	-	-20.30	29.99	39.77	24.03	-26.22	29.43	-1.63	23.06
Bmrk (USD)	-	-	-11.37	26.60	16.25	18.54	-18.36	22.20	17.49	21.07

The fund is actively managed, which means that the investments are selected at the discretion of the investment manager. The fund is not constrained by its benchmark, which is used for comparison purposes only.

<sup>1</sup>Performance to latest month end. YTD - Year to Date, SI - Since Inception. 12 month period based on month end NAVs.

<sup>2</sup>Returns for these periods are cumulative.

<sup>3</sup>Returns are annualised for periods longer than one year.

<sup>4</sup>Returns from 21 August 2018 to latest month end.

<sup>5</sup>Data shown since the share class inception date.

<sup>6</sup>Performance for the current calendar year is the year to date.

Fund performance is representative of the USD I Accumulating Class and has been calculated to account for the deduction of fees. Investors who subscribe in a currency other than the base currency of the fund should note that returns may increase or decrease as a result of currency fluctuations. **Fund performance does not take account of any commission or costs incurred by investors when subscribing for or redeeming shares.**

## TOP 10 HOLDINGS % (MV)

	Fund	Bmrk
Infineon Technologies AG	5.34	0.06
TechnipFMC plc	5.30	0.00
Kia Corporation	5.22	0.02
Contemporary Amperex Technology Co., Limited Class A	5.10	0.02
NVIDIA Corporation	5.01	4.66
Taiwan Semiconductor Manufacturing Co., Ltd. Sponsored ADR	4.23	0.00
Carvana Co. Class A	3.73	0.05
Amphenol Corporation Class A	3.53	0.19
HEICO Corporation	3.23	0.02
XPeng, Inc. Class A	3.22	0.01

## CONTACT

Client Services (Singapore): +65 6645 3786  
 Client Services (Hong Kong): +852 3664 8868  
 Email: nbasiaclientservices@nb.com  
 Website: www.nb.com

# Neuberger Berman Next Generation Mobility Fund

28 November 2025

## SECTOR ALLOCATIONS % (MV)

	Fund	Bmrk
Industrials	32.83	10.52
Information Technology	30.14	27.27
Consumer Discretionary	24.01	10.23
Energy	5.30	3.44
Materials	3.01	3.54
Communication Services	2.60	9.02
Consumer Staples	0.00	5.24
Financials	0.00	17.08
Health Care	0.00	9.22
Real Estate	0.00	1.80
Utilities	0.00	2.64
Cash	2.11	0.00

## REGIONAL ALLOCATIONS % (MV)

	Fund	Bmrk
United States	39.57	64.20
Emerging market countries	28.19	10.79
Europe ex-UK	15.26	11.26
United Kingdom	9.19	3.43
Asia Pacific ex-Japan	3.46	2.22
Canada	2.22	2.98
Japan	0.00	4.88
Africa / Middle East	0.00	0.23
Cash	2.11	0.00

## RISK MEASURES

	3 years
Alpha	-8.80
Tracking Error (%)	10.86
Beta	1.36
Sharpe Ratio	0.47
Information Ratio	-0.54
R-Squared (%)	72.15
Standard Deviation	18.90

## CHARACTERISTICS

	Fund	Bmrk
Number of Securities	41	2,517
Market Cap (USD Million)	448,282	955,318
Forward Price/Earnings (P/E) ratio	23.05	21.34
Estimated 3-5 Year EPS Growth (%)	17.57	11.97
Dividend Yield (%)	0.92	1.63
Price / Sales	2.41	2.96

## ASSET SUMMARY

	Fund
Cash equivalents (%)	2.11
Assets in Top 10 Holdings (%)	43.92

# Neuberger Berman Next Generation Mobility Fund

28 November 2025

## SHARE CLASS PERFORMANCE

Past performance does not predict future returns.

PERFORMANCE (%) <sup>7</sup>	Inception Date	1m <sup>8</sup>	3m <sup>8</sup>	YTD <sup>8</sup>	1y <sup>8</sup>	3y <sup>8</sup>	5y <sup>8</sup>	10y <sup>8</sup>	SI <sup>9</sup>
EUR I Accumulating Class	13-01-2021	-3.30	2.38	20.18	15.90	10.12	-	-	3.86
USD I Accumulating Class	21-08-2018	-3.08	3.03	23.06	18.90	12.79	8.57	-	10.55
USD I Distributing Class	21-08-2018	-3.04	3.03	23.07	18.91	12.79	8.56	-	10.55
Bmrk (USD)	-	-0.01	5.93	21.07	18.21	18.64	11.97	-	11.40 <sup>10</sup>

12 MONTH PERIODS (%) <sup>7</sup>	Inception Date	Nov 15 Nov 16	Nov 16 Nov 17	Nov 17 Nov 18	Nov 18 Nov 19	Nov 19 Nov 20	Nov 20 Nov 21	Nov 21 Nov 22	Nov 22 Nov 23	Nov 23 Nov 24	Nov 24 Nov 25
EUR I Accumulating Class	13-01-2021	-	-	-	-	-	-	-20.34	5.88	8.81	15.90
USD I Accumulating Class	21-08-2018	-	-	-	13.49	38.57	26.96	-17.17	8.98	10.72	18.90
USD I Distributing Class	21-08-2018	-	-	-	13.49	38.67	26.89	-17.18	8.99	10.72	18.91
Bmrk (USD)	-	-	-	-	13.68	15.01	19.27	-11.62	12.01	26.12	18.21

CALENDAR (%)	Inception Date	2016	2017	2018	2019	2020	2021	2022	2023	2024	2025 <sup>11</sup>
EUR I Accumulating Class	13-01-2021	-	-	-	-	-	16.00 <sup>12</sup>	-29.22	26.19	-3.38	20.18
USD I Accumulating Class	21-08-2018	-	-	-20.30 <sup>12</sup>	29.99	39.77	24.03	-26.22	29.43	-1.63	23.06
USD I Distributing Class	21-08-2018	-	-	-20.30 <sup>12</sup>	29.99	39.77	23.98	-26.20	29.46	-1.63	23.07
Bmrk (USD)	-	-	-	-11.37 <sup>10</sup>	26.60	16.25	18.54	-18.36	22.20	17.49	21.07

The fund is actively managed, which means that the investments are selected at the discretion of the investment manager. The fund is not constrained by its benchmark, which is used for comparison purposes only.

<sup>7</sup>Performance to latest month end. YTD - Year to Date, SI - Since Inception. 12 month period based on month end NAVs.

<sup>8</sup>Returns for these periods are cumulative.

<sup>9</sup>Returns are annualised for periods longer than one year.

<sup>10</sup>Data shown since inception of the USD I Accumulating Class

<sup>11</sup>Performance for the current calendar year is the year to date.

<sup>12</sup>Data shown since the share class inception date.

Where a benchmark is shown, the benchmark shown is provided in the base currency of the fund and therefore may not be a fair representative comparison to the hedged currency share class shown. The difference in the currency exposure and currency fluctuations in an unhedged benchmark may cause an unintended differential in any performance or risk comparison.



# Neuberger Berman Next Generation Mobility Fund

28 November 2025

## SHARE CLASS DATA

Share Class	NAV	Ongoing Charge	Management Fee	Last Distribution	Annual Yield
EUR I Accumulating Class <sup>#</sup>	12.03	1.05%*	0.85%	-	-
EUR I Accumulating Class Unhedged	19.36	1.04%*	0.85%	-	-
USD I Accumulating Class	20.76	1.05%*	0.85%	-	-
USD I Distributing Class	20.75	1.04%*	0.85%	-	0.00%

Share Class	Inception Date	Morningstar Category	ISIN	Bloomberg
EUR I Accumulating Class <sup>#</sup>	13-01-2021	Other Equity	IE00BN6HJT78	NENGMIE ID
EUR I Accumulating Class Unhedged	24-06-2020	Sector Equity Technology	IE00BKPHW879	NBNEIAU ID
USD I Accumulating Class	21-08-2018	Sector Equity Technology	IE00BFY81J05	NBNGMIU ID
USD I Distributing Class	21-08-2018	Sector Equity Technology	IE00BFLTYG40	NBNGMID ID

\*The ongoing charge figure (which includes the management fee) is an annual charge based on expenses for the period ending 31 December 2024.

Some share classes listed are subject to restrictions, please refer to the fund's prospectus for further details.

Investors who subscribe in a currency different from their local currency should note that the costs may increase or decrease as a result of currency and exchange rate fluctuations.

Before subscribing please refer to the Prospectus.

For a full glossary of terms, please refer to [www.nb.com/glossary](http://www.nb.com/glossary)

<sup>#</sup> Hedged Share Class. Hedged share classes which are designated in a currency other than the base currency of the fund, are hedged into the base currency. For details please refer to the prospectus.

Fund price is as of the date of the factsheet. Please note that the last distribution quoted is the dividend payout per share on the relevant share class's last distribution date which varies (monthly, weekly, quarterly, semi-annually or annually) and may be different from the date of the factsheet.

The annual yield figure quoted is the distribution yield, calculated by multiplying the dividend by pay periods, dividing by the net asset value (NAV) of the last distribution date and then multiplying by 100%. It is for reference only and is not indicative of the return of the Fund's future dividend to be received by investors.

In respect of distributing share classes, the Directors of the Company may at their discretion pay dividends out of the capital of the Fund. Dividends paid out of capital amount to a return or withdrawal of part of an investor's original investment or from any capital gains attributable to that original investment. Such dividends may result in an immediate decrease in the net asset value (NAV) of the relevant shares. Dividends are not paid for all share classes and are not guaranteed. A positive distribution yield does not imply a positive return, and some share classes listed are subject to further restrictions. Please refer to the Fund's prospectus for further details.

## RISK CONSIDERATIONS

**Market Risk:** The risk of a change in the value of a position as a result of underlying market factors, including among other things, the overall performance of companies and the market perception of the global economy.

**Liquidity Risk:** The risk that the fund may be unable to sell an investment readily at its fair market value. In extreme market conditions this can affect the fund's ability to meet redemption requests upon demand.

**Concentration Risk:** The fund's investments may be concentrated in a small number of investments and its performance may therefore be more variable than the performance of a more diversified fund.

**Emerging Markets Risk:** Emerging markets are likely to bear higher risk due to a possible lack of adequate financial, legal, social, political and economic structures, protection and stability as well as uncertain tax positions which may lead to lower liquidity. **The NAV of the fund may experience medium to high volatility due to lower liquidity and the availability of reliable information, as well as due to the fund's investment policies or portfolio management techniques.**

**Stock Connect Risk:** The Shanghai/Shenzhen-Hong Kong Stock Connect are relatively new trading programmes, where many of the relevant regulations are untested and subject to change at any moment as well as not as active as exchanges in more developed markets which may affect the ability to sell your shares. Additional risks needs to be considered and you should refer to the 'investment risk' section of the prospectus for details.

**Smaller Companies Risk:** The fund may invest in small capitalisation companies. Such investments involve greater risk than is customarily associated with larger, more established companies due to the greater business risks of small size, limited markets and financial resources, narrow product lines and a frequent lack of depth of management.

**Counterparty Risk:** The risk that a counterparty will not fulfil its payment obligation for a trade, contract or other transaction, on the due date.

**Operational Risk:** The risk of direct or indirect loss resulting from inadequate or failed processes, people and systems including those relating to the safekeeping of assets or from external events.

**Derivatives Risk:** The fund is permitted to use certain types of financial derivative instruments (including certain complex instruments). This may increase the fund's leverage significantly which may cause large variations in the value of your share. Investors should note that the fund may achieve its investment objective by investing principally in Financial Derivative Instruments (FDI). There are certain investment risks that apply in relation to the use of FDI. The fund's use of FDI can involve significant risks of loss.

**Currency Risk:** Investors who subscribe in a currency other than the base currency of the fund are exposed to currency risk. Fluctuations in exchange rates may affect the return on investment. Where past performance is shown it is based on the share class to which this factsheet relates. **If the currency of this share class is different from your local currency, then you should be aware that due to exchange rate fluctuations the performance shown may increase or decrease if converted into your local currency.**

For full information on these and other risks, please refer to the fund prospectus and offering documents, including the KID or KIID, as applicable.

This Fund meets the requirements of Article 8 of the SFDR. Further information is available in the Fund's offering documents and at [www.nb.com](http://www.nb.com)

For Sophisticated Investor Use only



# Neuberger Berman Next Generation Mobility Fund

28 November 2025

## IMPORTANT INFORMATION

**Except for performance, the data shown is for the fund and is not specific to the share class, it has not been adjusted to reflect the different fees and expenses of the share class.**

**Performance of another share class may vary from the results shown based on differences in fees and expenses, and currency.**

Source: Neuberger Berman, FactSet and Morningstar.

Neuberger Berman Investment Funds plc (the "Fund") is authorised by the Central Bank of Ireland (the "Central Bank") as an Undertaking for Collective Investment in Transferable Securities under the European Communities ("UCITS") Regulations 2011 (S.I. 352 of 2011) of Ireland, as amended. Neuberger Berman Asset Management Ireland Limited may decide to terminate the arrangements made for the marketing of its funds in all or a particular country.

This document is presented solely for information purposes and nothing herein constitutes investment, legal, accounting or tax advice, or a recommendation to buy, sell or hold a security.

This document is addressed to professional clients only, this includes, advisors, institutional investors, consultants, intermediaries and qualified investors.

We do not represent that this information, including any third party information, is accurate or complete and it should not be relied upon as such.

No recommendation or advice is being given as to whether any investment or strategy is suitable for a particular investor. Each recipient of this document should make such investigations as it deems necessary to arrive at an independent evaluation of any investment, and should consult its own legal counsel and financial, actuarial, accounting, regulatory and tax advisers to evaluate any such investment.

It should not be assumed that any investments in securities, companies, sectors or markets identified and described were or will be profitable. Investors may not get back the full amount invested.

The fees and charges paid by the Fund will reduce the return on your investment. Certain costs paid by the Fund will be charged in USD, EUR, GBP, CHF, CNY, HKD, DKK, SGD or other currencies and exchange rate fluctuations may cause these costs to increase or decrease when converted into your local currency.

All information is current as of the date of this material and is subject to change without notice.

The fund described in this document may only be offered for sale or sold in jurisdictions in which or to persons to which such an offer or sale is permitted. The fund can only be promoted if such promotion is made in compliance with the applicable jurisdictional rules and regulations. This document and the information contained therein may not be distributed in the US.

Indices are unmanaged and not available for direct investment.

Past performance is not a reliable indicator of current or future results. The value of investments may go down as well as up and investors may not get back any of the amount invested. The performance data does not take account of the commissions and costs incurred by investors when subscribing for or redeeming shares.

Please note that any dividends/interest which the Fund may receive may be subject to withholding tax. The benchmark does not take into account the effects of tax and the deduction is therefore not reflected in the benchmark return illustrated herein. The investment objective and performance benchmark is a target only and not a guarantee of the Fund performance. The index is unmanaged and cannot be invested in directly. Index returns assume reinvestment of dividends and capital gains and unlike fund returns do not reflect fees or expenses. Adverse movements in currency exchange rates can result in a decrease in return and a loss of capital. The investments of each portfolio may be fully hedged into the portfolio's base currency: this may reduce currency risks but may also expose the portfolio to other risks such as the default of a counterparty.

Monthly and weekly Distributing Classes will distribute out of income and may also be paid out of capital. Payments from capital will erode the overall value of an investor's portfolio. Investors in these classes should be aware that the payment out of capital may have different tax implications from distributions of income and should seek tax advice. In respect of the C, C1, C2, E and B share classes a contingent deferred sales charge may be payable to the Investment Manager in line with the provisions of the Fund's prospectus.

Following a redemption request, the Fund will seek to make payments within 3 business days of the dealing day, otherwise redemption proceeds will be paid within 10 business days, unless dealing has been temporarily suspended in accordance with the Fund prospectus.

Tax treatment depends on the individual circumstances of each investor and may be subject to change, investors are therefore recommended to seek independent tax advice.

Investment in the fund should not constitute a substantial proportion of an investor's portfolio and may not be appropriate for all investors. Diversification and asset class allocation do not guarantee profit or protect against loss.

### Important information for Sophisticated Investors in Hong Kong, People's Republic of China and Taiwan:

This document has been issued by Neuberger Berman Asia Limited ("NBAL"), which is licensed and regulated by the Hong Kong Securities and Futures Commission to carry on Types 1, 4 and 9 regulated activities, as defined under the Securities and Futures Ordinance of Hong Kong (Cap.571) (the "SFO").

**Hong Kong:** The contents of this document have not been reviewed by any regulatory authority in Hong Kong. Please note that (i) Securities may not be offered or sold in Hong Kong by means of this document or any other document other than to "professional investors" as defined in Part I of Schedule 1 to the SFO.

**People's Republic of China (the "PRC"):** The Securities, if any, referred to in this document are not being offered or sold directly or indirectly in the PRC to or for the benefit of, any legal or natural person of the PRC. Further, no legal or natural person of the PRC may directly or indirectly purchase Securities or any beneficial interest in such Securities without obtaining all necessary prior PRC's governmental approvals, whether required by statute or otherwise.

**Taiwan:** Any Securities referred to in this document may be made available in Taiwan on a private placement basis only to banks, bills houses, trust enterprises, financial holding companies and other qualified entities or institutions (collectively, "Qualified Institutions") and other entities and individuals meeting specific criteria ("Other Qualified Investors") pursuant to the private placement provisions of Taiwan's Rules Governing Offshore Funds. No other offer or sale of the Securities in Taiwan is permitted. A Qualified Institution or Other Qualified Investor, which purchases the Securities, may not sell or otherwise dispose of such Securities except by redemption, transfer to a Qualified Institution or Other Qualified Investor, transfer by operation of law or other means approved by Taiwan's Financial Supervisory Commission.

### Important information for Sophisticated Investors in Singapore, Brunei, Thailand, Indonesia, Philippines and Malaysia:

This document is issued by Neuberger Berman Singapore Pte. Limited ("NBS"), which currently carries out the regulated activity of fund management under the Securities and Futures Act 2001 ("SFA") and operates as an Exempt Financial Adviser under section 20(1)(d) of the Financial Advisers Act 2001 ("FAA") of Singapore. Under the FAA, NBS is exempted from Sections 34, 36 and 45 of the FAA, where its financial advisory service is provided to an accredited or expert investor (as defined in Section 4A of the SFA).

**Singapore:** Any offer or invitation which is the subject of this document is only allowed to certain persons and institutions and not to the retail public. Moreover, this document or any written materials issued in connection with the offer is not a prospectus as defined in the Securities and Futures Act 2001 of Singapore (the "SFA"). Accordingly, statutory liability under the SFA in relation to the contents of prospectuses would not apply. The Offeree to whom this document is provided should consider carefully whether the investment, if any, is suitable for it.

This document and any other document or material in connection with the offer or sale, or invitation for subscription or purchase, of any Security may not be circulated or distributed, nor may any Security be offered or sold, or be made the subject of an invitation for subscription or purchase, whether directly or indirectly, to the public or any member of the public in Singapore other than (i) "institutional investors" pursuant to Section 304 of the Act, (ii) "relevant persons" pursuant to section 305(1) of the Act, (iii) any person pursuant to Section 305(2) of the Act, or (iv) otherwise pursuant to, and in accordance with the conditions of, other applicable provisions of the Act.

The Portfolios are restricted schemes under the Sixth Schedule to the Securities and Futures (Offers of Investments) (Collective Investment Schemes) Regulations. The offer, holding and subsequent transfer of Shares are subject to restrictions and conditions under the Act. You should consider carefully whether you are permitted (under the Act and any laws or regulations applicable to you) to make an investment in the Shares and whether any such investment is suitable for you and you should consult your legal or professional advisor if in doubt.

**Brunei:** NBS does not have a capital market service licence under the Securities Market Order 2013 to provide investment advice to clients, or to undertake investment business, in Brunei. By requesting or accepting financial product information from NBS, you agree, represent and warrant that you are engaging our services or in receipt of information wholly outside Brunei and, as applicable, subject to the foreign laws of the contract governing the terms of the engagement. This document does not constitute an offer or an advertisement within the meaning of the Securities Market Order 2013 and shall not be distributed or circulated to any person in Brunei other than the intended recipient.

**Thailand:** This document has not been approved by the Securities and Exchange Commission which takes no responsibility for its contents. No offer to the public to purchase the shares will be made in Thailand and this document is intended to be read by the addressee only and must not be passed to, issued to, or shown to the public generally.

**Indonesia:** This document does not constitute an offer to sell nor a solicitation to buy securities in Indonesia.

**Philippines:** The shares being offered or sold herein have not been registered with the Securities And Exchange Commission under the Securities Regulation Code. Any future offer or sale thereof is subject to registration requirements under the Code unless such offer or sale qualifies as an exempt transaction.

**Malaysia:** As the recognition by the Malaysian Securities Commission pursuant to Section 212 of the Malaysia Capital Markets and Services Act 2007 has not been/will not be obtained nor will this document be lodged or registered with the Malaysian Securities Commission, the shares hereunder are not being and will not be deemed to be issued, made available, offered for subscription or purchase in Malaysia and neither this document nor any document or other material in connection therewith should be distributed, caused to be distributed or circulated in Malaysia.

This document is being provided by NBAL or NBS on a confidential basis to an "accredited investor", "institutional investor", "professional investor", "QPI", "sophisticated investor", "wholesale investor" and/or other such qualified person, in each case as defined under the laws of the relevant jurisdiction listed below, and all of which together

**For Sophisticated Investor Use only**





# Neuberger Berman Next Generation Mobility Fund

28 November 2025

are generically referred to as a "Sophisticated Investor", on a "one-on-one" basis for informational and discussion purposes only. This document is intended only for the Sophisticated Investor to which it has been provided, is strictly confidential and may not be reproduced or redistributed in whole or in part nor may its contents be disclosed to any other person (other than such Sophisticated Investor's agents or advisers) under any circumstances. The information contained herein, is not, and does not constitute, a public or retail offer to buy or sell, or a public or retail solicitation of an offer to buy or sell, any fund, units or shares of any fund, security or other instrument ("Securities"), or to participate in any investment strategy.

© 2025 Morningstar. All Rights Reserved. The information contained herein: (1) is proprietary to Morningstar and/or its content providers; (2) may not be copied or distributed; and (3) is not warranted to be accurate, complete or timely. Neither Morningstar nor its content providers are responsible for any damages or losses arising from any use of this information. Past performance is no guarantee of future results.

For more detailed information about Morningstar's Rating, including its category rating methodology, please go to <https://shareholders.morningstar.com/investor-relations/governance/Compliance--Disclosure/default.aspx>

No part of this document may be reproduced in any manner without prior written permission of Neuberger Berman.

The "Neuberger Berman" name and logo are registered service marks of Neuberger Berman Group LLC.

© 2025 Neuberger Berman Group LLC. All rights reserved.

## Robeco Smart Mobility I USD

Robeco Smart Mobility is an actively managed fund that invests globally in companies involved in electric or fuel cell vehicle production including components and the entire value chain, clean energy supply through smart networks and charging infrastructure, as well as shared mobility and autonomous driving. The selection of these stocks is based on fundamental analysis. The fund has sustainable investment as its objective, within the meaning of Article 9 of the Regulation (EU) 2019/2088 of 27 November 2019 on Sustainability-related disclosures in the financial sector. The fund's objective is also to achieve a better return than the Benchmark. The strategy integrates sustainability criteria as part of the stock selection process and through a theme-specific sustainability assessment. The portfolio is built on the basis of an eligible investment universe that includes companies whose business models contribute to the thematic investment objectives. The assessment regarding relevant SDGs uses an internally developed framework, more information on which can be obtained at [www.robeco.com/si](http://www.robeco.com/si).



Pieter Busscher CFA, Clément Chamboulive, Giacomo Fumagalli  
Fund manager since 01-08-2021

### Performance

	Fund	Index
1 m	-2.39%	0.28%
3 m	5.02%	5.58%
Ytd	24.14%	20.12%
1 Year	22.37%	16.99%
2 Years	14.32%	22.29%
3 Years	9.31%	19.11%
5 Years	4.54%	12.90%
Since 07-2018	10.54%	11.99%

Annualized (for periods longer than one year)

Note: Due to a difference in the measurement period between the fund and the index, performance differences may arise. For further info, see last page.

### Calendar year performance

	Fund	Index
2024	-1.13%	18.67%
2023	16.41%	23.79%
2022	-26.12%	-18.14%
2021	11.44%	21.82%
2020	62.54%	15.90%
2022-2024	-5.26%	6.34%
2020-2024	9.02%	11.17%

Annualized (years)

**Past performance is no guarantee of future results. The value of your investments may fluctuate.** If the currency in which the past performance is displayed differs from the currency of the country in which you reside, then you should be aware that due to exchange rate fluctuations the performance shown may increase or decrease if converted into your local currency. Performance since inception is as of the first full month. Periods shorter than one year are not annualized. Returns net of fees, based on transaction prices.

### Index

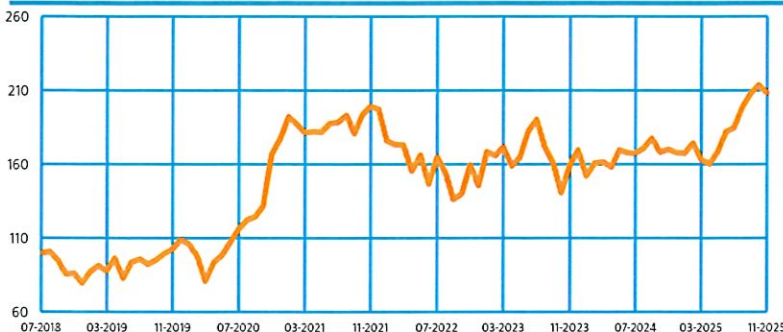
MSCI World Index TRN

### General facts

Morningstar	★★★
Type of fund	Equities
Currency	USD
Total size of fund	USD 314,765,420
Size of share class	USD 32,299,241
Outstanding shares	154,621
1st quotation date	29-10-2020
Close financial year	31-12
Ongoing charges	0.98%
Daily tradable	Yes
Dividend paid	No
Ex-ante tracking error limit	-
Management company	Robeco Institutional Asset Management B.V.

### Performance

Indexed value (until 30-11-2025) - Source: Robeco



Robeco Smart Mobility I USD

### Performance

Based on transaction prices, the fund's return was -2.39%.

SQM climbed after signing a long-term lithium-hydroxide supply agreement with a major European cathode maker and confirming 2025 capacity expansion is on track. The deal reassured investors that SQM will capture rising EV battery demand under EU sourcing rules, reinforcing its central role in critical-battery materials. Albemarle advanced as management raised full-year guidance, citing stronger spot-lithium pricing and accelerated offtake under its US loan-backed Kings Mountain restart. Analog Devices outperformed after posting a beat-and-raise quarter driven by record automotive revenue. A newly announced collaboration with a global OEM on software-defined power domains underscored ADI's expanding footprint in next-gen vehicle architectures. Delta Electronics eased despite solid earnings, as management flagged a pause in North American DC-fast-charger orders and rising price competition in Chinese AC chargers. While Delta's technology remains central to charging infrastructure build-outs, investors focused on near-term margin compression.

### Market development

November saw notable traction in autonomous driving platforms, with Pony.ai accelerating commercialization in China by scaling its Gen-7 robotaxi fleet toward 1,000 vehicles, achieving city-level unit-economics breakeven in Guangzhou, and broadening fully driverless operations across key corridors in Beijing, Shanghai, Shenzhen and other tier-one districts, while preparing expansion into additional international markets through partnerships such as its tie-up with European ride-hailing platform Bolt. Waymo, a unit of Alphabet, continued to densify its US footprint, extending its contiguous driverless service zone across more than 260 square miles in the San Francisco Bay Area with new freeway access, opening airport routes. Meanwhile, Tesla pushed its Full Self-Driving (Supervised) strategy on two fronts, beginning ride-along programs in major European markets such as Italy, France and Germany, while working toward potential regulatory approval in the Netherlands in 2026, and continuing a global FSD rollout and software upgrades.

### Expectation of fund manager

The underlying fundamentals (as reflected by the core themes addressed by the strategy) are very robust. Technology companies with strong and sustainable moats remain the focus of the strategy's investments. These companies focus on the development of high-voltage electric, low-voltage electronic and software-managed solutions that enable electrification, connectivity and autonomous driving. Other key enabling technologies include battery management systems, power inverters and artificial intelligence (AI). The strategy will also continue to seek exposure to the EV market as well as to companies helping to develop EV infrastructure worldwide.



### Top 10 largest positions

Infineon – leverages SiC and GaN power semiconductors to boost efficiency in traction inverters, on-board chargers and DC-DC converters, accelerating greener, smarter mobility; Analog Devices – delivers precision sensing, power management and high-bandwidth connectivity chips that enable fast charging, zonal vehicle architectures and quiet, data-rich cabins; CATL – the world's leading EV battery supplier, providing advanced lithium-ion and sodium-ion solutions that power a broad range of electric vehicles globally; Teradyne – supplies precision semiconductor test platforms that validate ADAS processors, radar sensors and EV power modules, ensuring reliable autonomous and electric mobility; SOM – low-cost brine-based lithium producer feeding cathode supply chains for EVs and large-scale energy storage.

### Fund price

30-11-25	USD	208.56
High Ytd (27-10-25)	USD	215.33
Low Ytd (08-04-25)	USD	136.74

### Fees

Management fee	0.80%
Performance fee	None
Service fee	0.12%

### Legal status

Investment company with variable capital incorporated under Luxembourg law (SICAV)  
 Issue structure Open-end  
 UCITS V Yes  
 Share class I USD  
 This fund is a subfund of Robeco Capital Growth Funds, SICAV.

### Registered in

Austria, Belgium, Finland, France, Germany, Ireland, Italy, Liechtenstein, Netherlands, Singapore, Spain, Sweden, Switzerland, United Kingdom

### Currency policy

The fund is allowed to pursue an active currency policy to generate extra returns and can engage in currency hedging transactions.

### Risk management

Risk management is fully integrated into the investment process to ensure that positions always meet the investment guidelines.

### Dividend policy

In principle the fund does not intend to distribute dividend and so both the income earned by the fund and its overall performance are reflected in its share price.

### Fund codes

ISIN	LU2145466475
Bloomberg	RSSMEIU LX
WKN	A2QD28
Valoren	55744756

### Top 10 largest positions

Holdings	Sector	%
Infineon Technologies AG	Semiconductors & Semiconductor Equipment	4.70
Analog Devices Inc	Semiconductors & Semiconductor Equipment	4.31
Contemporary Amperex Technology Co Ltd	Electrical Equipment	4.25
Teradyne Inc	Semiconductors & Semiconductor Equipment	4.03
Sociedad Quimica y Minera de C ADR	Chemicals	3.90
Albemarle Corp	Chemicals	3.72
BYD Co Ltd	Automobiles	3.70
QUALCOMM Inc	Semiconductors & Semiconductor Equipment	3.64
Texas Instruments Inc	Semiconductors & Semiconductor Equipment	3.29
Delta Electronics Inc	Electronic Equipment, Instruments & Components	3.27
<b>Total</b>		<b>38.81</b>

Holdings are subject to change. This is not a buy, sell or hold recommendation for any particular security. The securities shown here are for illustrative purposes only to demonstrate the investment strategy on the date stated above. It cannot be guaranteed the same securities will be considered in the future. No reference can be made to the future development of the securities.

### Top 10/20/30 weights

TOP 10	38.81%
TOP 20	65.29%
TOP 30	84.42%

### Key risk figures

	3 Years	5 Years
Tracking error ex-post (%)	15.03	14.70
Information ratio	-0.58	-0.50
Sharpe ratio	0.24	0.10
Alpha (%)	-12.07	-7.54
Beta	1.51	1.27
Standard deviation	22.69	23.17
Max. monthly gain (%)	15.78	15.78
Max. monthly loss (%)	-12.87	-12.87

Above mentioned ratios are based on gross of fees returns

### Hit ratio

	3 Years	5 Years
Months outperformance	19	29
Hit ratio (%)	52.8	48.3
Months Bull market	25	40
Months outperformance Bull	14	21
Hit ratio Bull (%)	56.0	52.5
Months Bear market	11	20
Months Outperformance Bear	5	8
Hit ratio Bear (%)	45.5	40.0

Above mentioned ratios are based on gross of fees returns

Past performance is no guarantee of future results. The value of your investments may fluctuate.

### Changes

This share class shows performance information prior to its launch date. On the launch date of this share class, the fund absorbed Multipartner SICAV - Robeco Smart Mobility Fund. Performance prior to the launch date has been simulated on the basis of the past performance of the absorbed fund that had similar investment policy and applied higher or comparable charges.



## Asset Allocation

Asset allocation		
Equity		99.5%
Cash		0.5%

## Sector allocation

The fund invests in companies exposed to structural growth trends of the 'Smart Mobility' theme. As a consequence, the portfolio is particularly invested in companies in the technology sector, followed by the industrial and consumer discretionary sectors.

Sector allocation			Deviation index	
Semiconductors & Semiconductor Equipment	<div><div></div></div>	36.1%	<div><div></div></div>	25.1%
Electrical Equipment	<div><div></div></div>	12.7%	<div><div></div></div>	11.3%
Electronic Equipment, Instruments & Components	<div><div></div></div>	12.2%	<div><div></div></div>	11.3%
Automobiles	<div><div></div></div>	9.8%	<div><div></div></div>	7.6%
Chemicals	<div><div></div></div>	9.7%	<div><div></div></div>	8.5%
Auto Components	<div><div></div></div>	6.8%	<div><div></div></div>	6.6%
Software	<div><div></div></div>	4.3%	<div><div></div></div>	-3.6%
Technology Hardware, Storage & Peripherals	<div><div></div></div>	2.9%	<div><div></div></div>	-2.6%
Leisure Products	<div><div></div></div>	1.7%	<div><div></div></div>	1.7%
Machinery	<div><div></div></div>	1.4%	<div><div></div></div>	-0.5%
Household Durables	<div><div></div></div>	1.3%	<div><div></div></div>	0.8%
Hotels, Restaurants & Leisure	<div><div></div></div>	1.2%	<div><div></div></div>	-0.4%
Other	<div><div></div></div>	0.0%	<div><div></div></div>	-65.7%

## Regional allocation

The fund invests globally. Most exposure is to US-listed stocks, followed by China, Japan, the Eurozone, Switzerland, Taiwan, Chile and South Korea.

Regional allocation		Deviation index	
Asia	<div><div></div></div> 42.0%	<div><div></div></div> 34.0%	
America	<div><div></div></div> 39.4%	<div><div></div></div> -36.5%	
Europe	<div><div></div></div> 18.6%	<div><div></div></div> 2.7%	
Middle East	<div><div></div></div> 0.0%	<div><div></div></div> -0.3%	

## Currency allocation

The fund has no currency hedges in place. This means the currency allocation is a reflection of the investments of the fund.

Currency allocation			Deviation index	
U.S. Dollar	<div><div></div></div>	39.9%	<div><div></div></div>	-32.9%
Hong Kong Dollar	<div><div></div></div>	13.8%	<div><div></div></div>	13.3%
Japanese Yen	<div><div></div></div>	12.9%	<div><div></div></div>	7.4%
Euro	<div><div></div></div>	11.9%	<div><div></div></div>	3.4%
Taiwan Dollar	<div><div></div></div>	4.7%	<div><div></div></div>	4.7%
Chinese Renminbi (Yuan)	<div><div></div></div>	4.2%	<div><div></div></div>	4.2%
Chilean Peso	<div><div></div></div>	3.9%	<div><div></div></div>	3.9%
Korean Won	<div><div></div></div>	3.9%	<div><div></div></div>	3.9%
Swiss Franc	<div><div></div></div>	3.7%	<div><div></div></div>	1.4%
Pound Sterling	<div><div></div></div>	1.2%	<div><div></div></div>	-2.4%
Canadian Dollar	<div><div></div></div>	0.0%	<div><div></div></div>	-3.3%
Singapore Dollar	<div><div></div></div>	0.0%	<div><div></div></div>	-0.4%
Other	<div><div></div></div>	0.0%	<div><div></div></div>	-3.1%

The allocations shown are for illustrative purposes only. This is the current overview as of the date stated and not a guarantee of future developments. It should not be assumed that any investments in these allocations were or will be profitable. Due to rounding, the sum may not equal 100%.

## ESG Important information

The sustainability information in this factsheet can help investors integrate sustainability considerations in their process. This information is for informational purposes only. The reported sustainability information may not at all be used in relation to binding elements for this fund. A decision to invest should take into account all characteristics or objectives of the fund as described in the prospectus. The prospectus is available on request and free of charge on the Robeco website.

## Sustainability

The fund's sustainable investment objective is to support the transformation and decarbonization of the global transportation sector. The transformation and decarbonization of the global transportation sector and sustainability considerations are incorporated in the investment process by the means of a target universe definition, exclusions, ESG integration, a carbon footprint target and voting. The fund only invests in companies that have a significant thematic fit as per Robeco's thematic universe methodology. Through screening on both Robeco's internally developed SDG Framework and Robeco's exclusion policy, the fund does not invest in issuers that have a negative impact on the SDGs, are in breach of international norms or where products have been deemed controversial. Financially material ESG factors are integrated in the bottom-up fundamental investment analysis to assess existing and potential ESG risks and opportunities. The fund's weighted carbon footprint will be equal to or better than that of its Climate Transition Benchmark. In addition, where a stock issuer is flagged for breaching international standards in the ongoing monitoring, the issuer will become subject to exclusion. Lastly, the fund makes use of shareholder rights and applies proxy voting in accordance with Robeco's proxy voting policy.

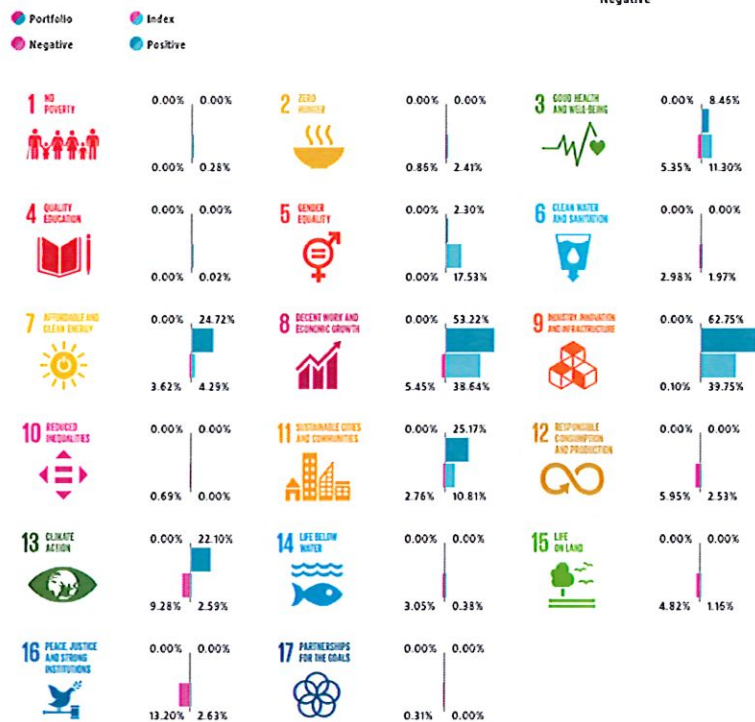
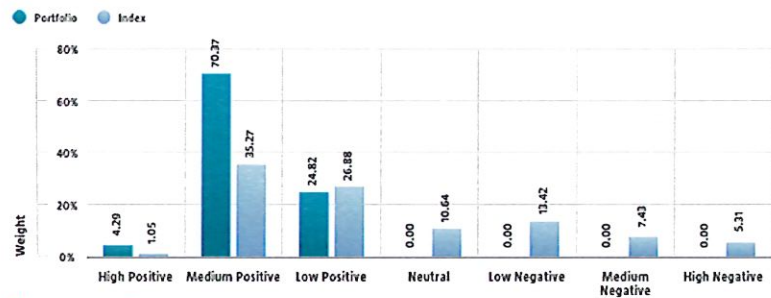
For more information please visit the sustainability-related disclosures.

The index used for all sustainability visuals is based on MSCI World Index TRN.

## SDG Impact Alignment

This distribution across SDG scores shows the portfolio weight allocated to companies with a positive, negative and neutral impact alignment with the Sustainable Development Goals (SDG) based on Robeco's SDG Framework. The framework utilizes a three-step approach to assess a company's impact alignment with the relevant SDGs and assign a total SDG score. The score ranges from positive to negative impact alignment with levels from high, medium or low impact alignment. This results in a 7-step scale from -3 to +3. For comparison, index figures are provided alongside that of the portfolio. Only holdings mapped as corporates are included in the figures.

Use of the United Nations Sustainable Development Goals (SDG) logos, including the colour wheel, and icons shall only serve explanatory and illustrative purposes and may not be interpreted as an endorsement by the United Nations of this entity, or the product(s) or service(s) mentioned in this document. The opinions or interpretations shown in this document hence do not reflect the opinion or interpretations of the United Nations.

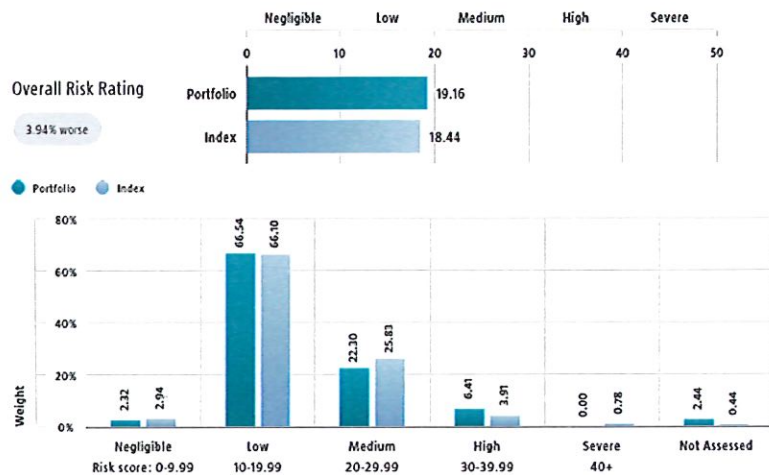


Source: Robeco. Data derived from internal processes.



### Sustainalytics ESG Risk Rating

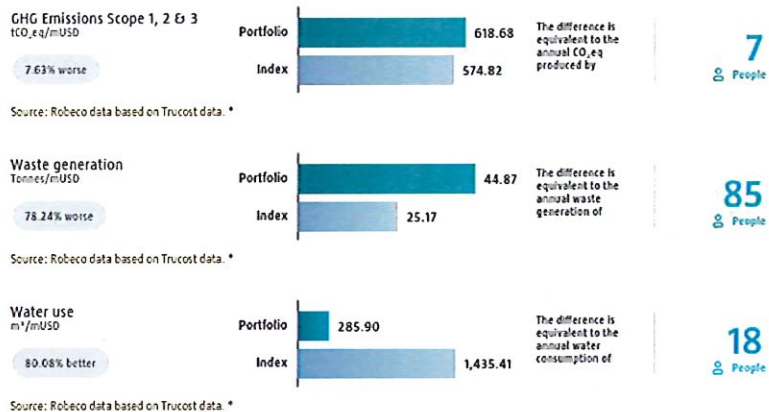
The Portfolio Sustainalytics ESG Risk Rating chart displays the portfolio's ESG Risk Rating. This is calculated by multiplying each portfolio component's Sustainalytics ESG Risk Rating by its respective portfolio weight. The Distribution across Sustainalytics ESG Risk levels chart shows the portfolio allocations broken into Sustainalytics' five ESG risk levels: negligible (0-10), low (10-20), medium (20-30), high (30-40) and severe (40+), providing an overview of portfolio exposure to the different ESG risk levels. Index scores are provided alongside the portfolio scores, highlighting the portfolio's ESG risk level compared to the index. Only holdings mapped as corporates are included in the figures.



Source: Copyright © 2025 Sustainalytics. All rights reserved.

### Environmental Footprint

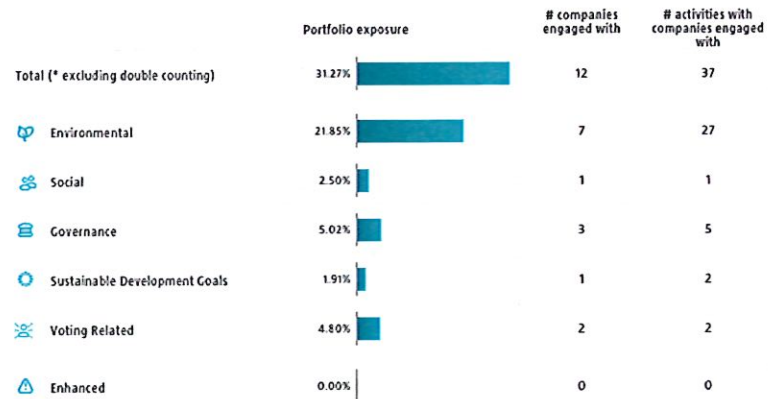
Environmental footprint expresses the total resource consumption of the portfolio per mUSD invested. Each assessed company's footprint is calculated by normalizing resources consumed by the company's enterprise value including cash (EVIC). We aggregate these figures to portfolio level using a weighted average, multiplying each assessed portfolio constituent's footprint by its respective position weight. For comparison, index footprints are shown besides that of the portfolio. The equivalent factors that are used for comparison between the portfolio and index represent European averages and are based on third-party sources combined with own estimates. As such, the figures presented are intended for illustrative purposes and are purely an indication. Only holdings mapped as corporates are included in the figures.



\* Source: S&P Global Market Intelligence data © Trucost 2025. All rights in the Trucost data and reports vest in Trucost and/or its licensors. Neither S&P Global Market Intelligence, nor its affiliates, nor its licensors accept any liability for any errors, omissions or interruptions in the Trucost data and/or reports. No further distribution of the Data and/or Reports is permitted without S&P Global Market Intelligence's express written consent. Reproduction of any information, data or material, including ratings is prohibited. The content is not a recommendation to buy, sell or hold such investment or security, nor does it address suitability of an investment or security and should not be relied on as investment advice.

### Engagement

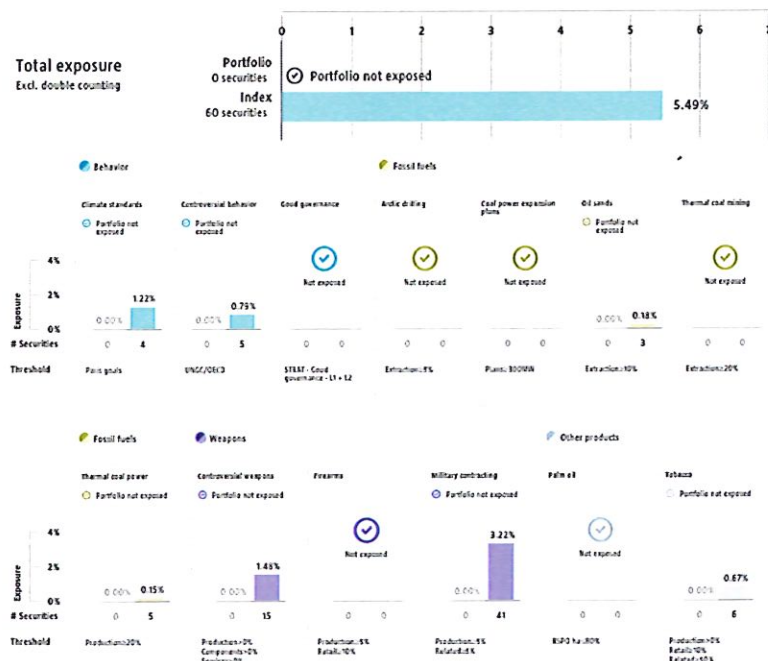
Robeco distinguishes between three types of engagement. Value Engagement focuses on long-term issues that are financially material and/or are causing adverse sustainability impacts. The themes can be broken into Environmental, Social, Governance, or Voting-related. SDG Engagement aims to drive a clear and measurable improvement in a company's SDG contribution. Enhanced engagement is triggered by misconduct and focuses on companies severely breaching international standards. The report is based on all companies in the portfolio for which engagement activities have taken place during the past 12 months. Note that companies may be under engagement in multiple categories simultaneously. While the total portfolio exposure excludes double counting, it may not equal the sum of individual category exposures.



Source: Robeco. Data derived from internal processes

### Exclusions

The Exclusions charts display the degree of adherence to exclusion applied by Robeco. For reference, index exposures are shown beside that of the portfolio. Thresholds are based on revenues unless otherwise indicated. For more information about the exclusion policy and which level applies, please refer to the Exclusion Policy and Exclusion List available on Robeco.com.



Source: We use several data sources such as Sustainalytics, RSPO (Roundtable on Sustainable Palm Oil), World Bank, Freedom House, Fund for Peace and International Sanctions; further policy document available [Exclusion Policy](#)



## Investment policy

Robeco Smart Mobility is an actively managed fund that invests globally in companies involved in electric or fuel cell vehicle production including components and the entire value chain, clean energy supply through smart networks and charging infrastructure, as well as shared mobility and autonomous driving. The selection of these stocks is based on fundamental analysis. The fund has sustainable investment as its objective, within the meaning of Article 9 of the Regulation (EU) 2019/2088 of 27 November 2019 on Sustainability-related disclosures in the financial sector. The fund's objective is also to achieve a better return than the Benchmark. The strategy integrates sustainability criteria as part of the stock selection process and through a theme-specific sustainability assessment. The portfolio is built on the basis of an eligible investment universe that includes companies whose business models contribute to the thematic investment objectives. The assessment regarding relevant SDGs uses an internally developed framework, more information on which can be obtained at [www.robeco.com/si](http://www.robeco.com/si).

The fund has sustainable investment as its objective within the meaning of Article 9 of the European Sustainable Finance Disclosure Regulation. The fund furthes the decarbonization of the global transportation sector through investments in its electrification by investing in companies that advance the following UN Sustainable Development Goals (UN SDGs): Affordable and Clean Energy goal, Decent work and economic growth, Industry, innovation and infrastructure, Sustainable cities and communities, and Climate Action. The fund integrates ESG (Environmental, Social and Governance) factors in the investment process and applies sustainability indicators, including but not limited to Robeco's Good Governance policy, normative, activity-based and region-based exclusions, carbon reduction target and proxy voting.

## Fund manager's CV

Pieter Busscher is Portfolio Manager of the Robeco Smart Materials and Robeco Smart Mobility strategies and member of the Thematic Investing team. He started at Robeco in 2007 as a Deputy Portfolio Manager for the Sustainable Water strategy. Pieter became the Portfolio Manager for Smart Materials in 2009; for Smart Mobility he had been Deputy Portfolio for since strategy launch in 2018 and took over the portfolio management responsibilities in 2021. He began his career at Credit Suisse Asset Management in Zurich in 2006. He graduated from the International Business at RSM Erasmus University (Bachelor), the Banking and Finance at the University of St. Gallen (Master) and is a CFA® Charterholder. Clément Chamboulivie is Co-Portfolio Manager of the Robeco Smart Mobility strategy and member of the Thematic Investing team. Prior to joining in 2021, he was at the Swiss investment firm 2Xideas, where he worked as an Equity Analyst focusing on Technology and Semiconductors. Prior to that, he founded and ran Kerra GmbH, a provider of independent research and analysis to private and public sector entities. Before that, he spent four years with Baillie Gifford as an investment analyst/manager in different segments, where he started his career in 2011. Clément holds a BSc (Hons) from the University of Edinburgh and MSc from ETH Zurich, both in Physics. Giacomo Fumagalli is Co-Portfolio Manager of the Robeco Smart Mobility strategy and member of the Thematic Investing team. Prior to joining Robeco in 2019, he worked at Lemanik SA, an investment management company located in Lugano, where he was part of the Italian equities team that managed two mutual funds mainly invested in Italian stocks. Previous to that, he worked as Junior Portfolio Manager at Credit Suisse in Milano, where he started his career in 2012, covering European equities for UHNWI discretionary mandates and was Assistant Portfolio Manager of the CS Equity Italy mutual fund. Giacomo holds a M.Sc. in Finance from Bocconi University in Milano as well as a M.Sc. in Accounting and Control from the Rotterdam School of Management (Erasmus University). He is a CFA® Charterholder.

## Fiscal product treatment

The fund is established in Luxembourg and is subject to the Luxembourg tax laws and regulations. The fund is not liable to pay any corporation, income, dividend or capital gains tax in Luxembourg. The fund is subject to an annual subscription tax ('tax d'abonnement') in Luxembourg, which amounts to 0.01% of the net asset value of the fund. This tax is included in the net asset value of the fund. The fund can in principle use the Luxembourg treaty network to partially recover any withholding tax on its income.

## Fiscal treatment of investor

Investors who are not subject to (exempt from) Dutch corporate-income tax (e.g. pension funds) are not taxed on the achieved result. Investors who are subject to Dutch corporate-income tax can be taxed for the result achieved on their investment in the fund. Dutch bodies that are subject to corporate-income tax are obligated to declare interest and dividend income, as well as capital gains in their tax return. Investors residing outside the Netherlands are subject to their respective national tax regime applying to foreign investment funds. We advise individual investors to consult their financial or tax adviser about the tax consequences of an investment in this fund in their specific circumstances before deciding to invest in the fund.

## Sustainability images

The figures shown in the sustainability visuals are calculated on subfund level.

## MSCI disclaimer

Source MSCI. MSCI makes no express or implied warranties or representations and shall have no liability whatsoever with respect to any MSCI data contained herein. The MSCI data may not be further redistributed or used as a basis for other indices or any securities or financial products. This report is not approved, endorsed, reviewed or produced by MSCI. None of the MSCI data is intended to constitute investment advice or a recommendation to make (or refrain from making) any kind of investment decision and may not be relied on as such.

## Morningstar

Copyright © Morningstar Benelux. All Rights Reserved. The information contained herein: (1) is proprietary to Morningstar and/or its content providers; (2) may not be copied or distributed; and (3) is not warranted to be accurate, complete or timely. Neither Morningstar nor its content providers are responsible for any damages or losses arising from any use of this information. Past performance is no guarantee of future results. For more information on Morningstar, please refer to [www.morningstar.com](http://www.morningstar.com)

## Febelfin disclaimer

The fact that the sub-fund has obtained this label does not mean that it meets your personal sustainability goals or that the label is in line with requirements arising from any future national or European rules. The label obtained is valid for one year and subject to annual reappraisal. For further information on this label, please visit [www.towardsustainability.be](http://www.towardsustainability.be).





## Important Information

Robeco Institutional Asset Management B.V. has a license as manager of Undertakings for Collective Investment in Transferable Securities (UCITS) and Alternative Investment Funds (AIFs) ("Fund(s)") from the Netherlands Authority for the Financial Markets. This is a marketing communication solely intended for professional investors, defined as investors qualifying as professional clients, who have requested to be treated as professional clients or who are authorized to receive such information under any applicable laws. Robeco Institutional Asset Management B.V. and/or its related, affiliated and subsidiary companies ("Robeco"), will not be liable for any damages arising out of the use of this document. Users of this information who provide investment services in the European Union have their own responsibility to assess whether they are allowed to receive the information in accordance with MiFID II regulations. To the extent this information qualifies as a reasonable and appropriate minor non-monetary benefit under MiFID II, users that provide investment services in the European Union are responsible for complying with applicable recordkeeping and disclosure requirements. The content of this document is based upon sources of information believed to be reliable and comes without warranties of any kind. Without further explanation this document cannot be considered complete. Any opinions, estimates or forecasts may be changed at any time without prior warning. If in doubt, please seek independent advice. This document is intended to provide the professional investor with general information about Robeco's specific capabilities but has not been prepared by Robeco as investment research and does not constitute an investment recommendation or advice to buy, hold or sell certain securities or investment products or to adopt any investment strategy or legal, accounting or tax advice. All rights relating to the information in this document are and will remain the property of Robeco. This document may not be copied or shared with the public. No part of this document may be reproduced or published in any form or by any means without Robeco's prior written permission. Investment involves risks. Before investing, please note the initial capital is not guaranteed. Investors should ensure they fully understand the risk associated with any Robeco product or service offered in their country of domicile. Investors should also consider their own investment objective and risk tolerance level. Historical returns are provided for illustrative purposes only. The price of units may go down as well as up and past performance is no guarantee of future results. If the currency in which the past performance is displayed differs from the currency of the country in which you reside, then you should be aware that due to exchange rate fluctuations the performance shown may increase or decrease if converted into your local currency. The performance data do not take account of the commissions and costs incurred when trading securities in client portfolios or for the issue and redemption of units. Unless otherwise stated, performances are i) net of fees based on transaction prices and ii) with dividends reinvested. Please refer to the prospectus of the Funds for further details. Performance is quoted net of investment management fees. The ongoing charges mentioned in this document are the ones stated in the Fund's latest annual report at closing date of the last calendar year. This document is not directed to or intended for distribution to or for use by any person or entity who is a citizen or resident of or located in any locality, state, country or other jurisdiction where such distribution, document, availability or use would be contrary to law or regulation or which would subject any Fund or Robeco Institutional Asset Management B.V. to any registration or licensing requirement within such jurisdiction. Any decision to subscribe for interests in a Fund offered in a particular jurisdiction must be made solely on the basis of information contained in the prospectus, which information may be different from the information contained in this document. Prospective applicants for shares should inform themselves as to legal requirements which may also apply and any applicable exchange control regulations and taxes in the countries of their respective citizenship, residence or domicile. The Fund information, if any, contained in this document is qualified in its entirety by reference to the prospectus, and this document should, at all times, be read in conjunction with the prospectus. Detailed information on the Fund and associated risks is contained in the prospectus. The prospectus and the Key Information Document (PRIIP) for the Robeco Funds can all be obtained free of charge from Robeco's websites.

### Additional Information for US investors

This document may be distributed in the US by Robeco Institutional Asset Management US, Inc. ("Robeco US"), an investment adviser registered with the US Securities and Exchange Commission (SEC). Such registration should not be interpreted as an endorsement or approval of Robeco US by the SEC. Robeco Institutional Asset Management B.V. is considered "participating affiliated" and some of their employees are "associated persons" of Robeco US as per relevant SEC no-action guidance. Employees identified as associated persons of Robeco US perform activities directly or indirectly related to the investment advisory services provided by Robeco US. In those situations these individuals are deemed to be acting on behalf of Robeco US. SEC regulations are applicable only to clients, prospects and investors of Robeco US. Robeco US is wholly owned subsidiary of ORIX Corporation Europe N.V. ("ORIX"), a Dutch Investment Management Firm located in Rotterdam, the Netherlands. Robeco US is located at 230 Park Avenue, 33rd floor, New York, NY 10169.

### Additional Information for US Offshore Investors – Reg S

The Robeco Capital Growth Funds have not been registered under the United States Investment Company Act of 1940, as amended, nor the United States Securities Act of 1933, as amended. None of the shares may be offered or sold, directly or indirectly in the United States or to any US Person. A US Person is defined as (a) any individual who is a citizen or resident of the United States for federal income tax purposes; (b) a corporation, partnership or other entity created or organized under the laws of or existing in the United States; (c) an estate or trust the income of which is subject to United States federal income tax regardless of whether such income is effectively connected with a United States trade or business. In the United States, this material may be distributed only to a person who is a "distributor", or who is not a "US person", as defined by Regulation S under the U.S. Securities Act of 1933 (as amended).

### Additional Information for investors with residence or seat in Australia

This document is distributed in Australia by Robeco Hong Kong Limited (ARBN 156 512 659), which is exempt from the requirement to hold an Australian financial services license under the Corporations Act 2001 (Cth) pursuant to ASIC Class Order 03/1103. Robeco Hong Kong Limited is regulated by the Securities and Futures Commission under the laws of Hong Kong and those laws may differ from Australian laws. This document is distributed only to "wholesale clients" as that term is defined under the Corporations Act 2001 (Cth). This document is not intended for distribution or dissemination, directly or indirectly, to any other class of persons. This document is not intended for public distribution in Australia.

### Additional Information for investors with residence or seat in New Zealand

In New Zealand, this document is only available to wholesale investors within the meaning of clause 3(2) of Schedule 1 of the Financial Markets Conduct Act 2013 (FMCA). This document is not intended for public distribution in New Zealand.

### Additional Information for investors with residence or seat in Austria

This information is solely intended for professional investors or eligible counterparties in the meaning of the Austrian Securities Oversight Act.

### Additional Information for investors with residence or seat in Brazil

The Fund may not be offered or sold to the public in Brazil. Accordingly, the Fund has not been nor will be registered with the Brazilian Securities Commission (CVM), nor has it been submitted to the foregoing agency for approval. Documents relating to the Fund, as well as the information contained therein, may not be supplied to the public in Brazil, as the offering of the Fund is not a public offering of securities in Brazil, nor may they be used in connection with any offer for subscription or sale of securities to the public in Brazil.

### Additional Information for investors with residence or seat in Brunei

The Prospectus relates to a private collective investment scheme which is not subject to any form of domestic regulations by the Autoriti Monetari Brunei Darussalam ("Authority"). The Prospectus is intended for distribution only to specific classes of investors as specified in section 20 of the Securities Market Order, 2013, and must not, therefore, be delivered to, or relied on by, a retail client. The Authority is not responsible for reviewing or verifying any prospectus or other documents in connection with this collective investment scheme. The Authority has not approved the Prospectus or any other associated documents nor taken any steps to verify the information set out in the Prospectus and has no responsibility for it. The units to which the Prospectus relates may be illiquid or subject to restrictions on their resale. Prospective purchasers of the units offered should conduct their own due diligence on the units.

### Additional Information for investors with residence or seat in Canada

No securities commission or similar authority in Canada has reviewed or in any way passed upon this document or the merits of the securities described herein, and any representation to the contrary is an offence. Robeco Institutional Asset Management B.V. relies on the international dealer and international adviser exemption in Quebec and has appointed McCarthy Tétrault LLP as its agent for service in Quebec.

### Additional Information for investors with residence or seat in the Republic of Chile

Neither Robeco nor the Funds have been registered with the Comisión para el Mercado Financiero pursuant to Law no. 18.045, the Ley de Mercado de Valores and regulations thereunder. This document does not constitute an offer of or an invitation to subscribe for or purchase shares of the Funds in the Republic of Chile, other than to the specific person who individually requested this information on their own initiative. This may therefore be treated as a "private offering" within the meaning of Article 4 of the Ley de Mercado de Valores (an offer that is not addressed to the public at large or to a certain sector or specific group of the public).

### Additional Information for investors with residence or seat in Colombia

This document does not constitute a public offer in the Republic of Colombia. The offer of the fund is addressed to less than one hundred specifically identified investors. The fund may not be promoted or marketed in Colombia or to Colombian residents, unless such promotion and marketing is made in compliance with Decree 2555 of 2010 and other applicable rules and regulations related to the promotion of foreign funds in Colombia. The distribution of this Prospectus and the offering of Shares may be restricted in certain jurisdictions. The information contained in this Prospectus is for general guidance only, and it is the responsibility of any person or persons in possession of this Prospectus and wishing to make application for Shares to inform themselves of, and to observe, all applicable laws and regulations of any relevant jurisdiction. Prospective applicants for Shares should inform themselves of any applicable legal requirements, exchange control regulations and applicable taxes in the countries of their respective citizenship, residence or domicile.

### Additional Information for investors with residence or seat in the Dubai International Financial Centre (DIFC), United Arab Emirates

This material is distributed by Robeco Institutional Asset Management B.V. (DIFC Branch) located at Office 209, Level 2, Gate Village Building 7, Dubai International Financial Centre, Dubai, PO Box 482060, UAE. Robeco Institutional Asset Management B.V. (DIFC Branch) is regulated by the Dubai Financial Services Authority ("DFSA") and only deals with Professional Clients or Market Counterparties and does not deal with Retail Clients as defined by the DFSA.

### Additional Information for investors with residence or seat in France

Robeco Institutional Asset Management B.V. is at liberty to provide services in France. Robeco France is a subsidiary of Robeco whose business is based on the promotion and distribution of the group's funds to professional investors in France.

### Additional Information for investors with residence or seat in Germany

This information is solely intended for professional investors or eligible counterparties in the meaning of the German Securities Trading Act.

### Additional Information for investors with residence or seat in Hong Kong

This document is solely intended for professional investors, which has the meaning ascribed to it in the Securities and Futures Ordinance (Cap 571) and its subsidiary legislation of Hong Kong. This document is issued by Robeco Hong Kong Limited ("Robeco"), which is regulated by the Hong Kong Securities and Futures Commission ("SFC"). The contents of this document have not been reviewed by the SFC. If there is any doubt about any of the contents of this document, independent professional advice should be obtained.

### Additional Information for investors with residence or seat in Indonesia

The Prospectus does not constitute an offer to sell nor a solicitation to buy securities in Indonesia.

### Additional Information for investors with residence or seat in Italy

This document is considered for use solely by qualified investors and private professional clients (as defined in Article 26 (1) (b) and (d) of Consob Regulation No. 16190 dated 29 October 2007). If made available to Distributors and individuals authorized by Distributors to conduct promotion and marketing activity, it may only be used for the purpose for which it was conceived. The data and information contained in this document may not be used for communications with Supervisory Authorities. This document does not include any information to determine, in concrete terms, the investment



inclination and, therefore, this document cannot and should not be the basis for making any investment decisions.

#### **Additional information for investors with residence or seat in Japan**

This document is considered for use solely by qualified investors and is distributed by Robeco Japan Company Limited, registered in Japan as a Financial Instruments Business Operator, [registered No. the Director of Kanto Local Financial Bureau (Financial Instruments Business Operator), No.2780, Member of Japan Investment Advisors Association].

#### **Additional information for investors with residence or seat in South Korea**

No representation is made with respect to the eligibility of any recipients of the document to acquire the Funds therein under the laws of South Korea, including but not limited to the Foreign Exchange Transaction Act and Regulations thereunder. The Funds have not been registered under the Financial Investment Services and Capital Markets Act of Korea, and none of the Funds may be offered, sold or delivered, or offered or sold to any person for re-offering or resale, directly or indirectly, in South Korea or to any resident of South Korea except pursuant to applicable laws and regulations of South Korea.

#### **Additional information for investors with residence or seat in Liechtenstein**

This document is exclusively distributed to Liechtenstein-based, duly licensed financial intermediaries (such as banks, discretionary portfolio managers, insurance companies, fund of funds) which do not intend to invest on their own account into Fund(s) displayed in the document. This material is distributed by Robeco Switzerland Ltd, postal address: Josefstrasse 218, 8005 Zurich, Switzerland. LGT Bank Ltd., Herrengasse 12, FL-9490 Vaduz, Liechtenstein acts as the representative and paying agent in Liechtenstein. The prospectus, the Key Information Documents (PRIIP), the articles of association, the annual and semi-annual reports of the Fund(s) may be obtained from the representative or via the website.

#### **Additional information for investors with residence or seat in Malaysia**

Generally, no offer or sale of the Shares is permitted in Malaysia unless where a Recognition Exemption or the Prospectus Exemption applies: NO ACTION HAS BEEN, OR WILL BE, TAKEN TO COMPLY WITH MALAYSIAN LAWS FOR MAKING AVAILABLE, OFFERING FOR SUBSCRIPTION OR PURCHASE, OR ISSUING ANY INVITATION TO SUBSCRIBE FOR OR PURCHASE OR SALE OF THE SHARES IN MALAYSIA OR TO PERSONS IN MALAYSIA AS THE SHARES ARE NOT INTENDED BY THE ISSUER TO BE MADE AVAILABLE, OR MADE THE SUBJECT OF ANY OFFER OR INVITATION TO SUBSCRIBE OR PURCHASE, IN MALAYSIA. NEITHER THIS DOCUMENT NOR ANY DOCUMENT OR OTHER MATERIAL IN CONNECTION WITH THE SHARES SHOULD BE DISTRIBUTED, CAUSED TO BE DISTRIBUTED OR CIRCULATED IN MALAYSIA. NO PERSON SHOULD MAKE AVAILABLE OR MAKE ANY INVITATION OR OFFER OR INVITATION TO SELL OR PURCHASE THE SHARES IN MALAYSIA UNLESS SUCH PERSON TAKES THE NECESSARY ACTION TO COMPLY WITH MALAYSIAN LAWS.

#### **Additional information for investors with residence or seat in Mexico**

The Funds have not been and will not be registered with the National Registry of Securities or maintained by the Mexican National Banking and Securities Commission and, as a result, may not be offered or sold publicly in Mexico. Robeco and any underwriter or purchaser may offer and sell the funds in Mexico on a private placement basis to Institutional and Accredited Investors, pursuant to Article 8 of the Mexican Securities Market Law.

#### **Additional information for investors with residence or seat in Peru**

The Superintendencia del Mercado de Valores (SMV) does not exercise any supervision over this Fund and therefore the management of it. The information the Fund provides to its investors and the other services it provides to them are the sole responsibility of the Administrator. This Prospectus is not for public distribution.

#### **Additional information for investors with residence or seat in Singapore**

This document has not been registered with the Monetary Authority of Singapore ("MAS"). Accordingly, this document may not be circulated or distributed directly or indirectly to persons in Singapore other than (i) to an institutional investor under Section 304 of the SFA, (ii) to a relevant person pursuant to Section 305(1), or any person pursuant to Section 305(2), and in accordance with the conditions specified in Section 305, of the SFA, or (iii) otherwise pursuant to, and in accordance with the conditions of, any other applicable provision of the SFA. The contents of this document have not been reviewed by the MAS. Any decision to participate in the Fund should be made only after reviewing the sections regarding investment considerations, conflicts of interest, risk factors and the relevant Singapore selling restrictions (as described in the section entitled "Important information for Singapore Investors") contained in the prospectus. Investors should consult their professional adviser if you are in doubt about the stringent restrictions applicable to the use of this document, regulatory status of the Fund, applicable regulatory protection, associated risks and suitability of the Fund to your objectives. Investors should note that only the Sub-Funds listed in the appendix to the section entitled "Important information for Singapore Investors" of the prospectus ("Sub-Funds") are available to Singapore investors. The Sub-Funds are notified as restricted foreign schemes under the Securities and Futures Act, Chapter 289 of Singapore ("SFA") and invoke the exemptions from compliance with prospectus registration requirements pursuant to the exemptions under Section 304 and Section 305 of the SFA. The Sub-Funds are not authorized or recognized by the MAS and shares in the Sub-Funds are not allowed to be offered to the retail public in Singapore. The prospectus of the Fund is not a prospectus as defined in the SFA. Accordingly, statutory liability under the SFA in relation to the content of prospectuses does not apply. The Sub-Funds may only be promoted exclusively to persons who are sufficiently experienced and sophisticated to understand the risks involved in investing in such schemes, and who satisfy certain other criteria provided under Section 304, Section 305 or any other applicable provision of the SFA and the subsidiary legislation enacted thereunder. You should consider carefully whether the investment is suitable for you. Robeco Singapore Private Limited holds a capital markets services license for fund management issued by the MAS and is subject to certain clientele restrictions under such license.

#### **Additional information for investors with residence or seat in Spain**

Robeco Institutional Asset Management B.V., Sucursal en España with identification number W0032687F and having its registered office in Madrid at Calle Serrano 47-14<sup>a</sup>, is registered with the Spanish Commercial Registry in Madrid, in volume 19.957, page 190, section 8, sheet M-351927 and with the National Securities Market Commission (CNMV) in the Official Register of branches of European investment services companies, under number 24. The investment funds or SICAV mentioned in this document are regulated by the corresponding authorities of their country of origin and are registered in the Special Registry of the CNMV of Foreign Collective Investment Institutions marketed in Spain.

#### **Additional information for investors with residence or seat in South Africa**

Robeco Institutional Asset Management B.V. is registered and regulated by the Financial Sector Conduct Authority in South Africa.

#### **Additional information for investors with residence or seat in Switzerland**

The Fund(s) are domiciled in Luxembourg. This document is exclusively distributed in Switzerland to qualified investors as defined in the Swiss Collective Investment Schemes Act (CISA). This material is distributed by Robeco Switzerland Ltd, postal address: Josefstrasse 218, 8005 Zurich. ACOLIN Fund Services AG, postal address: Leutschenbachstrasse 50, 8050 Zürich, acts as the Swiss representative of the Fund(s). UBS Switzerland AG, Bahnhofstrasse 45, 8001 Zurich, postal address: Europastrasse 2, P.O. Box, CH-8152 Opfikon, acts as the Swiss paying agent. The prospectus, the Key Information Documents (PRIIP), the articles of association, the annual and semi-annual reports of the Fund(s), as well as the list of the purchases and sales which the Fund(s) has undertaken during the financial year, may be obtained, on simple request and free of charge, at the office of the Swiss representative ACOLIN Fund Services AG. The prospectuses are also available via the website.

#### **Additional information for investors with residence or seat in Taiwan**

The Funds may be made available outside Taiwan for purchase outside Taiwan by Taiwan resident investors, but may not be offered or sold in Taiwan. The contents of this document have not been reviewed by any regulatory authority in Taiwan. If you are in any doubt about any of the contents of this document, you should obtain independent professional advice.

#### **Additional information for investors with residence or seat in Thailand**

The Prospectus has not been approved by the Securities and Exchange Commission which takes no responsibility for its contents. No offer to the public to purchase the Shares will be made in Thailand and the Prospectus is intended to be read by the addressee only and must not be passed to, issued to, or shown to the public generally.

#### **Additional information for investors with residence or seat in the United Arab Emirates**

Some Funds referred to in this marketing material have been registered with the UAE Securities and Commodities Authority ("the Authority"). Details of all Registered Funds can be found on the Authority's website. The Authority assumes no liability for the accuracy of the information set out in this material/document, nor for the failure of any persons engaged in the investment Fund in performing their duties and responsibilities.

#### **Additional information for investors with residence or seat in the United Kingdom**

This is a marketing communication. This information is provided by Robeco Institutional Asset Management UK Limited, 30 Fenchurch Street, Part Level 8, London EC3M 3BD registered in England no. 15362605. Robeco Institutional Asset Management UK Limited is authorised and regulated by the Financial Conduct Authority (FCA – Reference No: 1007814). It is provided for informational purposes only and does not constitute investment advice or an invitation to purchase any security or other investment. Subscriptions will only be received and shares issued on the basis of the current Prospectus, relevant Key Investor Information Document (KIID) and other supplementary information for the Fund. These can be obtained free of charge from Northern Trust Global Serviced Limited, 50 Bank Street, Canary Wharf, London E14 5NT or from our website [www.robeco.com](http://www.robeco.com). This information is directed at Professional Clients only and is not intended for public use.

#### **Additional information for investors with residence or seat in Uruguay**

The sale of the Fund qualifies as a private placement pursuant to section 2 of Uruguayan law 18,627. The Fund must not be offered or sold to the public in Uruguay, except under circumstances which do not constitute a public offering or distribution under Uruguayan laws and regulations. The Fund is not and will not be registered with the Financial Services Superintendency of the Central Bank of Uruguay. The Fund corresponds to investment funds that are not investment funds regulated by Uruguayan law 16,774 dated 27 September 1996, as amended.

© Q4 2025 Robeco

## ปัจจัยความเสี่ยงของกองทุนรวม

### 1. ความเสี่ยงทางการตลาด (Market Risk)

คือความเสี่ยงจากความผันผวนของราคาหลักทรัพย์ที่กองทุนเข้าไปลงทุน ที่เกิดจากการเปลี่ยนแปลงในสถานะการณ์ทางเศรษฐกิจ สังคม และการเมือง ซึ่งเป็นความเสี่ยงที่ไม่สามารถควบคุมได้

**แนวทางการบริหารเพื่อลดความเสี่ยง:**

บริษัทจัดการจะวิเคราะห์ปัจจัยต่างๆรวมทั้งติดตามสถานการณ์การเปลี่ยนแปลงที่อาจมีผลกระทบต่อราคาและยังสามารถปรับสัดส่วนการลงทุนในกองทุนหลักได้ตามความเหมาะสม ซึ่งจะเป็นการช่วยลดผลกระทบต่อราคามูลค่าทรัพย์สินสุทธิของกองทุน

### 2. ความเสี่ยงจากอัตราแลกเปลี่ยน (Foreign Exchange Risk)

ความเสี่ยงที่การลงทุนอาจประสบกับความผันผวนของอัตราแลกเปลี่ยน ทำให้อัตราผลตอบแทนในรูปเงินบาทผันผวนหากค่าเงินตราสกุลต่างประเทศมีการเปลี่ยนแปลง

**แนวทางการบริหารเพื่อลดความเสี่ยง:**

กองทุนอาจใช้เครื่องมือป้องกันความเสี่ยงดังกล่าวโดยขึ้นอยู่กับดุลยพินิจของบริษัทจัดการ ซึ่งอาจมีต้นทุนสำหรับการทำธุรกรรมป้องกันความเสี่ยง โดยอาจทำให้ผลตอบแทนของกองทุนโดยรวมลดลงจากต้นทุนที่เพิ่มขึ้น

### 3. ความเสี่ยงของประเทศที่ลงทุน (Country Risk)

คือ ความเสี่ยงที่เกิดจากการเปลี่ยนแปลงภายในประเทศที่กองทุนเข้าไปลงทุน เช่น การเปลี่ยนแปลงผู้บริหาร, การเปลี่ยนแปลงนโยบายทางด้านเศรษฐกิจ หรือสาเหตุอื่นๆ จนทำให้ไม่สามารถชำระค่าขายคืนหน่วยลงทุนได้ตรงตามระยะเวลาที่กำหนด

**แนวทางการบริหารเพื่อลดความเสี่ยง:**

บริษัทจัดการจะวิเคราะห์ปัจจัยต่างๆ รวมทั้งติดตามสถานการณ์การเปลี่ยนแปลงที่อาจมีผลกระทบต่อราคาและยังสามารถปรับสัดส่วนการลงทุนในกองทุนหลักได้ตามความเหมาะสม ซึ่งจะเป็นการช่วยลดผลกระทบต่อราคามูลค่าทรัพย์สินสุทธิของกองทุน

### 4. ความเสี่ยงจากการลงทุนในสัญญาซื้อขายล่วงหน้า (Derivatives Risk)

สัญญาซื้อขายล่วงหน้าบางประเภทอาจมีการขึ้นลงผันผวน (Volatile) มากกว่าหลักทรัพย์พื้นฐาน ดังนั้นหากกองทุนมีการลงทุนในหลักทรัพย์ดังกล่าวย่อมทำให้สินทรัพย์มีความผันผวนมากกว่าการลงทุนในหลักทรัพย์พื้นฐาน (Underlying Security)

**แนวทางการบริหารเพื่อลดความเสี่ยง :**

กองทุนอาจจะลงทุนในตราสารอนุพันธ์ทางการเงิน เพื่อวัตถุประสงค์ในการป้องกันความเสี่ยงที่มีอยู่ (existing positions) หรือการจัดการพอร์ตโฟลิโอที่มีประสิทธิภาพ (efficient portfolio management) หรือทั้งสองจุดประสงค์ ทำให้เป็นการจำกัดความเสี่ยงจากการลงทุนในสัญญาซื้อขายล่วงหน้า



## 5. ความเสี่ยงจากข้อจำกัดการนำเงินลงทุนกลับประเทศ (Repatriation Risk)

เป็นความเสี่ยงที่เกิดจากการเปลี่ยนแปลงภายในประเทศที่กองทุนลงทุน เช่น การเปลี่ยนแปลงทางการเมือง ข้อกำหนดกฎเกณฑ์หรือนโยบายต่างๆ ของรัฐบาลในการบริหารประเทศ ซึ่งรวมถึงสาเหตุอื่นๆ ที่อาจทำให้ไม่สามารถชำระหนี้ได้ตรงตามระยะเวลาที่กำหนด รวมถึงอาจทำให้กองทุนเกิดความเสี่ยงจากสัญญาสวอป และ/หรือสัญญาฟอร์เวิร์ดได้ซึ่งมีผลกระทบต่อผลตอบแทนที่กองทุนจะได้รับจากการลงทุน

### แนวทางการบริหารเพื่อลดความเสี่ยง:

:

บริษัทจัดการจะติดตามสถานการณ์การเปลี่ยนแปลงการเมือง ภาวะเศรษฐกิจ ภาวะตลาดเงิน ตลาดทุน ตลอดจนปัจจัยพื้นฐานต่างๆ ของประเทศที่กองทุนลงทุนอย่างใกล้ชิด เพื่อประเมินความเสี่ยงจากการลงทุนในประเทศนั้นๆ เพื่อลดความเสี่ยงในส่วนนี้

## 6. ความเสี่ยงจากการลงทุนกระจุกตัว (High Concentration Risk)

1) ความเสี่ยงจากการลงทุนกระจุกตัวในผู้ออกตราสารรายใดรายหนึ่ง (High Issuer Concentration Risk) เกิดจากกองทุนลงทุนในผู้ออกตราสารรายใดๆ มากกว่า 10% ของ NAV รวมกัน ซึ่งหากเกิดเหตุการณ์ที่ส่งผลกระทบต่อการทำงานของธนาคารเงิน หรือความมั่นคงของผู้ออกตราสารรายดังกล่าว กองทุนอาจมีผลการดำเนินงานที่ผันผวนมากกว่ากองทุนที่กระจายการลงทุนในหลายผู้ออกตราสาร

ทั้งนี้ การลงทุนแบบกระจุกตัวไม่รวมถึงกรณีการลงทุนในทรัพย์สินดังนี้

1. ตราสารหนี้ภาครัฐไทย
2. ตราสารภาครัฐต่างประเทศที่มีการจัดอันดับความน่าเชื่อถืออยู่ในอันดับที่สามารถลงทุนได้
3. เงินฝากหรือตราสารเทียบเท่าเงินฝากที่ผู้รับฝากหรือผู้ออกตราสารที่มีการจัดอันดับความน่าเชื่อถืออยู่ในอันดับที่สามารถลงทุนได้

2) ความเสี่ยงจากการลงทุนกระจุกตัวในหมวดอุตสาหกรรมใดอุตสาหกรรมหนึ่ง (Sector Concentration Risk) เกิดจากกองทุนลงทุนในบางหมวดอุตสาหกรรมมากกว่า 20% ของ NAV รวมกัน ซึ่งหากเกิดเหตุการณ์ที่ส่งผลกระทบต่ออุตสาหกรรมนั้น กองทุนดังกล่าวอาจมีผลการดำเนินงานที่ผันผวนมากกว่ากองทุนที่กระจายการลงทุนในหลายหมวดอุตสาหกรรม

3) ความเสี่ยงจากการกระจุกตัวลงทุนในประเทศใดประเทศหนึ่ง (Country Concentration Risk) เกิดจากกองทุนลงทุนในประเทศใดประเทศหนึ่งมากกว่า 20% ของ NAV รวมกัน ทั้งนี้ ไม่รวมถึงการลงทุนในตราสารที่ผู้ออกเสนอขายอยู่ในประเทศไทย ซึ่งหากเกิดเหตุการณ์ที่ส่งผลกระทบต่อประเทศดังกล่าว เช่น การเมืองเศรษฐกิจ สังคม เป็นต้น กองทุนดังกล่าวอาจมีผลการดำเนินงานที่ผันผวนมากกว่ากองทุนที่กระจายการลงทุนในหลายประเทศ

# AIMC Category Performance Report

Report as of 31/12/2025



## Return statistics for Thailand Mutual Funds

AIMC Category	Average Trailing Return (%)							Average Calendar Year Return (%)				
	YTD	3M	6M	1Y	3Y	5Y	10Y	2021	2022	2023	2024	2025
Aggressive Allocation	-3.50	-0.58	9.48	-3.50	-3.79	-0.75	0.48	17.78	-4.53	-7.42	0.46	-3.50
ASEAN Equity	3.08	2.08	8.65	3.08	2.46	4.29	0.64	24.80	-13.86	1.56	4.16	3.08
Asia Pacific Ex Japan	24.09	2.94	12.88	24.09	7.48	-0.25	3.69	1.18	-22.07	-0.41	2.73	24.09
China Equity - A Shares	21.63	-0.45	21.24	21.63	0.12	-7.59	0.79	-5.44	-29.54	-20.95	5.66	21.63
Commodities Energy	-15.00	-6.87	-6.38	-15.00	-6.69	8.58	1.18	65.84	13.47	-6.87	2.67	-15.00
Commodities Precious Metals	55.93	11.63	27.82	55.93	26.99	14.78	11.39	-1.94	-0.75	9.13	20.70	55.93
Conservative Allocation	2.93	0.22	3.10	2.93	1.17	0.51	1.08	3.30	-3.64	-0.77	2.05	2.93
Emerging Market	22.37	2.79	10.94	22.37	8.65	-1.06	3.28	-3.39	-24.38	4.34	0.73	22.37
Emerging Market Bond Discretionary F/X Hedge or Unhedge	5.45	1.26	3.41	5.45	3.94	-1.73	1.41	-4.60	-16.35	0.95	6.59	5.45
Energy	-5.81	-2.24	11.38	-5.81	-10.33	-3.81	4.19	10.38	4.80	-17.51	-10.22	-5.81
Equity General	-9.05	-1.12	12.54	-9.05	-8.05	-1.33	0.49	19.03	1.13	-11.89	-1.94	-9.05
Equity Large Cap	-6.30	0.36	15.25	-6.30	-5.52	0.09	1.49	16.03	1.98	-9.68	1.34	-6.30
Equity Small - Mid Cap	-24.67	-7.61	5.29	-24.67	-15.84	-4.93	-1.44	41.13	-4.54	-13.32	-10.71	-24.67
European Equity	11.62	3.07	2.59	11.62	9.66	6.23	5.55	24.32	-19.18	12.78	6.42	11.62
Foreign Investment Allocation	8.40	1.33	5.24	8.40	5.89	0.97	3.14	6.90	-17.03	5.10	4.18	8.40
Fund of Property Fund - Foreign	3.46	-1.19	1.05	3.46	-0.27	-2.15	0.53	19.71	-25.78	0.76	-6.07	3.46
Fund of Property Fund - Thai	9.86	6.59	18.01	9.86	1.87	-0.31	1.88	-0.22	-6.52	-8.90	5.35	9.86
Fund of Property fund -Thai and Foreign	9.98	3.00	10.40	9.98	1.57	-0.91	3.07	2.89	-11.27	-1.75	-2.84	9.98
Global Bond Discretionary F/X Hedge or Unhedge	2.42	-0.15	1.12	2.42	2.37	-0.51	-0.42	1.13	-10.76	2.91	0.54	2.42
Global Bond Fully F/X Hedge	4.72	0.55	1.71	4.72	2.55	-1.10	0.36	0.11	-11.41	2.96	0.53	4.72
Global Equity	8.63	-0.54	3.91	8.63	11.26	2.49	5.87	12.50	-26.93	12.61	4.82	8.63
Global Equity - Alternative Energy	30.34	3.23	24.33	30.34	0.10	-2.30	-	3.05	-24.42	-7.94	-16.30	30.34
Global Equity - Consumer Goods and Services	3.82	-1.64	4.03	3.82	7.91	-5.46	3.27	-3.47	-32.19	9.05	10.24	3.82
Global Equity - Infrastructure	14.72	1.74	2.54	14.72	5.43	5.79	4.28	18.09	-8.55	0.86	1.70	14.72
Global Equity Fully FX Risk Hedge	14.45	0.85	5.52	14.45	13.09	4.92	5.48	15.15	-26.77	16.62	10.38	14.45
Greater China Equity	19.59	-7.38	9.19	19.59	1.22	-8.02	0.67	-12.55	-27.20	-20.20	6.94	19.59
Health Care	11.00	10.80	16.50	11.00	0.42	0.51	3.77	7.71	-19.54	-0.96	-7.28	11.00
High Yield Bond	3.20	0.05	1.36	3.20	4.38	1.45	3.10	4.76	-11.58	5.39	4.99	3.20
India Equity	-8.72	-0.28	-7.26	-8.72	5.01	5.59	5.95	26.23	-12.85	16.93	10.37	-8.72
Japan Equity	21.56	6.68	16.90	21.56	18.76	10.14	8.10	6.73	-10.31	20.35	15.09	21.56
Long Term General Bond	5.54	-1.38	0.03	5.54	3.31	1.90	1.97	-0.26	-1.11	1.01	5.36	5.54
Mid Term General Bond	3.44	0.12	1.01	3.44	2.61	1.72	1.68	0.67	0.14	1.61	2.85	3.44
Mid Term Government Bond	2.63	-0.32	0.59	2.63	1.88	1.27	1.38	-0.18	-0.06	0.81	2.87	2.63
Moderate Allocation	3.23	0.58	6.16	3.23	1.45	0.99	1.34	7.56	-5.37	-1.48	2.39	3.23
Money Market General	1.54	0.29	0.64	1.54	1.66	1.13	1.04	0.20	0.38	1.43	2.06	1.54
Money Market Government	1.41	0.27	0.59	1.41	1.60	1.06	0.98	0.18	0.35	1.38	1.98	1.41
Other Global Sector Equity	24.76	2.16	14.97	24.76	7.38	8.60	7.73	16.37	-22.72	3.42	-0.38	24.76
SET 50 Index Fund	-4.14	1.67	19.09	-4.14	-3.31	0.98	2.76	10.81	4.94	-11.29	6.24	-4.14
Short Term General Bond	1.93	0.33	0.80	1.93	1.90	1.29	1.18	0.42	0.55	1.53	2.11	1.93
Short Term Government Bond	1.43	0.26	0.60	1.43	1.54	1.01	0.93	-0.05	0.39	1.18	1.98	1.43
Technology Equity	19.09	-2.10	8.99	19.09	26.12	3.57	-	8.42	-43.73	47.90	18.49	19.09

Thai Free Hold	2.05	0.03	0.00	2.05	2.37	2.01	2.46	-0.63	3.30	2.56	0.97	2.05
Thai Mixed (between free and lease hold)	0.44	-0.13	-0.49	0.44	-0.44	-0.78	2.34	-1.48	-4.43	-1.13	-3.10	0.44
US Equity	8.96	0.32	6.55	8.96	17.98	5.38	9.13	22.20	-30.01	25.04	18.66	8.96
Vietnam Equity	8.56	-1.31	14.42	8.56	8.14	3.60	-	45.20	-32.85	7.81	8.60	8.56