

## United Global Balanced Fund (UGBF)

UGBF-A

### Fund Type / AIMC Category

- Mixed Fund
- Feeder Fund / Fund with Foreign Investment related Risks
- Foreign Investment Allocation

### Investment Policy and Strategy

- The Fund will mainly invest in JPMorgan Investment Funds – Global Balanced Fund class: JPM Global Balanced C (acc) - USD (hedged) (Master Fund)
- The master fund is managed by JPMorgan Asset Management (Europe) S.à r.l
- The fund seeks to closely track the performance of the master fund, which employs an active management strategy.

### Risk Level

Low 

1	2	3	4	5	6	7	8
---	---	---	---	---	---	---	---

 High

Moderate to high Risk

The Fund invests in equities, fixed income instruments and / or alternative assets with equity exposure not exceeding 80% of NAV

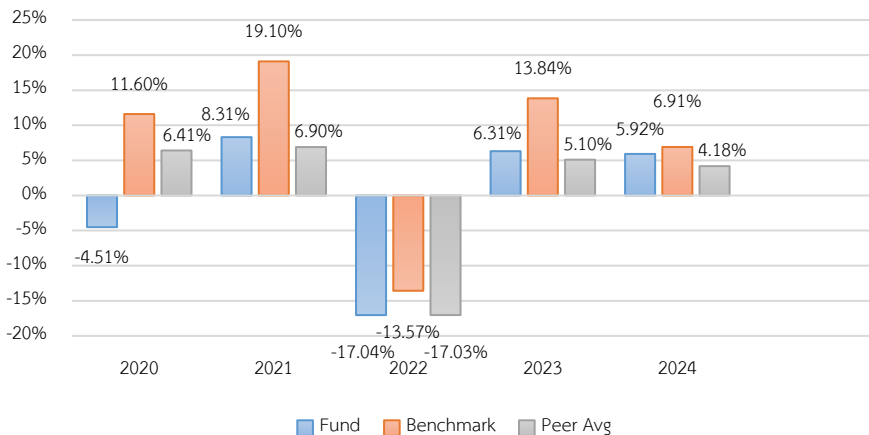
### Fund Information

Registered Date	2 February 2016
Class Inception Date	2 February 2016
Dividend Payment Policy	No dividend
Fund Duration	Indefinite

### Fund Manager

Mr. Waroon Saptaweekul Since 18 September 2023

### Calendar Year Performance (% p.a.)



### Fund Performance (%)

	YTD	3 Months	6 Months	1 Year*
Fund Return	6.41	3.15	7.11	3.46
Benchmark Return	7.72	3.47	7.83	4.97
Peer Average	7.90	3.03	7.27	5.67
Fund Standard Deviation	8.34	3.52	4.37	8.86
Benchmark Standard Deviation	8.45	3.54	4.45	8.98
	3 Years*	5 Years *	10 Years *	Since Inception *
Fund Return	5.48	1.73	-	1.61
Benchmark Return	8.26	6.40	-	5.65
Peer Average	5.07	1.44	-	-
Fund Standard Deviation	7.32	7.51	-	7.74
Benchmark Standard Deviation	8.04	8.94	-	7.95

Remark : \* % p.a.

### Benchmark

The performance of the master fund is adjusted for foreign exchange hedging costs to reflect the value in Thai Baht as of the performance calculation date (100%).

#### Remark:

The fund uses the stated benchmark solely for the purpose of comparing the fund's performance against the benchmark index.

#### Warning:

- Investment in Mutual Fund is not bank deposit.
- Past performance is not indicative of future results.

Certified by Thai Private Sector Collective Action

Against Corruption: Declared CAC

Morningstar 

### Full Prospectus



Investors can study

Liquidity Risk

Management tools in the full prospectus.

[www.uobam.co.th](http://www.uobam.co.th)

## Subscription

Subscription date : Every business day  
 Business hours : 08:30 a.m. - 03:30 p.m.  
 Min. initial subscription : None  
 Min. subsequent subscription : None

## Redemption

Redemption date : Every business day  
 Business hours : 08:30 a.m. - 02:00 p.m.  
 Min. redemption : None  
 Min. holding balance : None  
 Settlement period : T+4 business days  
 after the redemption date.

## Remark:

1. The fund will conduct automatic redemptions up to 12 times per year. The Management Company will publish the redemption schedule on its official website.
2. The Settlement period does not include non-business days in foreign countries.

## Statistical Data

Maximum Drawdown -20.00 %  
 Recovering Period 1 year 7 months  
 FX Hedging 95.09 %  
 Portfolio Turnover Ratio 0.02

## Fees charged to the Fund (% p.a. of NAV / Include VAT)

Fees	Max.	Actual
Management Fee	2.1400	0.7490
Total expenses	5.3500	0.9978

## Remark:

The management company may adjust the actual fees charged to align with its investment strategy or management expenses.

## Fees charged to unitholders (% of the unit price / Include VAT)

Fees	Max.	Actual
Front-end Fee	2.00	1.50
Back-end Fee	None	None
Switching-in Fee	2.00	1.50
Switching-out Fee	None	None
Transfer fee	None	None

## Remark:

1. In case of switching in, the Management Company will not charge front-end fee.
2. The Management Company may adjust the actual fees charged to align with its investment strategy or management expenses.
3. The Management Company may apply different fee structures to each investor group.

## Asset Allocation

breakdown	% NAV
1. Unit Trust	99.29
2. Other Asset and Liability	0.71

## Top 5 Holdings

holding	% NAV
1. JPMorgan Investment Funds - Global Balanced Fund	99.29

## Investment in the other funds exceeding 20% of NAV

Fund name : JPMorgan Investment Funds - Global Balanced Fund      ISIN code : LU0957039927      Bloomberg code : JFMUCHU LX

### Definition

**Maximum Drawdown :** The percentage of the fund's maximum loss in the past 5 years (or since the fund's inception if it is launched for less than 5 years) which is measured from the highest NAV per unit to the lowest NAV per unit during such period. Maximum Drawdown is an indicator of the risk of loss from investing in the fund.

**Recovering Period :** The length of time that the fund takes in recovering from the point of maximum loss to earning back the initial investment.

**FX Hedging :** The percentage of foreign currency investment with FX hedging.

**Portfolio Turnover Ratio :** The frequency of securities trading in the fund portfolio over a certain period, calculated by taking the lower value between the sum of the value of securities purchased and the sum of the value of securities sold of the fund in 1 year period divided by the average NAV in the same period. A fund with high Portfolio Turnover Ratio indicates frequent securities trading by fund manager resulting in high trading costs. Therefore, it is necessary to compare with the performance of the fund in order to assess the worthiness of such securities trading.

**Sharpe Ratio :** A ratio between the excess return of a fund and the risk of investment. The Sharpe ratio reveals the average investment return, minus the risk-free rate of return, divided by the standard deviation of returns for the fund. The Sharpe ratio reflects the extra return that should be received by the fund to compensate the amount of risk taken in investment. The fund with a higher Sharpe ratio is considered superior to other funds in terms of management efficiency since it provides higher excess return under the same risk level.

**Alpha :** The excess return of a fund relative to the return of a benchmark index. A fund with high alpha indicates that it is able to beat the performance of its corresponding benchmark which is a result of the capabilities of the fund manager in selecting appropriate securities for investment or making investment in a timely manner.

**Beta :** A measure of the degree and direction of volatility of the rate of return of assets in the investment portfolio of the fund compared to the changes in the overall market. A beta of less than 1.0 implies that the rate of return of the fund's assets is less volatile than that of the securities in the broader market whereas a beta of greater than 1.0 implies that the rate of return of the fund's assets is more volatile than that of the broader market.

**Tracking Error :** The efficiency of the fund to imitate its return to benchmark. Low Tracking Error means the fund is effective in generating return close to benchmark. High Tracking Error means the fund generates return more deviate from benchmark.

**Yield to Maturity :** The rate of return earned on a bond held to maturity, calculated from the interest expected to receive in the future over that bond duration and paid back principal discounted to the present value. It is used to measure return of fixed income funds by calculating the weighted average of Yield to Maturity of each bond that the fund invests. As Yield to Maturity has standard unit in percentage per annum, it can be used to compare the returns between fixed income funds that have an investment policy of holding bonds until maturity and similar investment characteristics.

“Important Notice: This Document has been translated from Thai. If there is any inconsistency or ambiguity between the English version and the Thai version, the Thai version shall prevail.”

## JPMorgan Investment Funds -

**Global Balanced Fund**

Class: JPM Global Balanced C (acc) - USD (hedged)

**Fund overview**

ISIN Bloomberg Reuters  
LU0957039927 JFMUCHU LX LU0957039927.LUF

**Investment objective:** To provide long-term capital growth and income by investing primarily in companies and debt securities issued or guaranteed by governments or their agencies, globally, using derivatives where appropriate.

**Investment approach**

- Multi-asset approach, combining asset allocation with bottom-up expertise leveraged from specialists from JPMorgan Asset Management's global investment platform.
- Actively managed implementation of equity and bond strategies, with a balanced risk profile.

<b>Portfolio manager(s)</b>	<b>Share class</b>	<b>Class launch</b>
Katy Thorneycroft	<b>currency USD</b>	27 Nov 2013
Jonathan Cummings	<b>Fund assets</b>	<b>Domicile Luxembourg</b>
Gareth Witcomb	EUR 2736.4m	<b>Entry/exit charges</b>
<b>Fund reference</b>	<b>Fund launch</b>	Entry charge (max) 0.00%
<b>currency EUR</b>	19 Jan 1995	Exit charge (max) 0.00%
	<b>NAV USD 285.03</b>	<b>Ongoing charge 0.90%</b>

**ESG information****ESG approach - ESG Promote**

Promotes environmental and / or social characteristics.

**SFDR classification: Article 8**

"Article 8" strategies promote social and/or environmental characteristics, but do not have sustainable investing as a core objective.

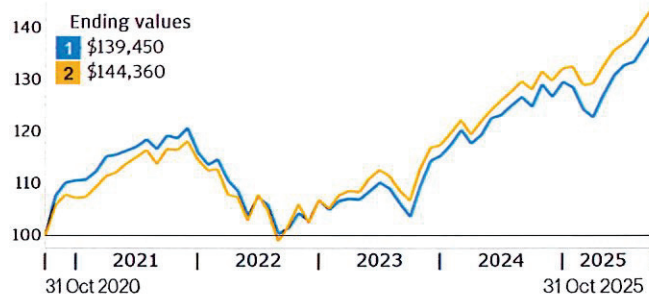
**Fund ratings** As at 31 October 2025

Overall Morningstar Rating™ ★★★★★

Morningstar Category™ USD Moderate Allocation

**Performance****1 Class:** JPM Global Balanced C (acc) - USD (hedged)

**2 Benchmark:** 50% J.P. Morgan Government Bond Index Global (Total Return Gross) Hedged to USD / 45% MSCI World Index (Total Return Net) Hedged to USD / 5% MSCI Emerging Markets Index (Total Return Net) in EUR Cross Hedged to USD

**Growth of USD 100,000 Calendar years****Calendar Year Performance (%)**

	2015	2016	2017	2018	2019	2020	2021	2022	2023	2024
1	1.22	3.61	12.91	-3.57	17.24	12.28	9.52	-14.84	11.35	10.74
2	1.57	7.06	10.58	-1.94	17.70	10.83	9.55	-13.29	14.10	11.12

**Return (%)**

	Cumulative				Annualised		
	1 month	3 months	1 year	YTD	3 years	5 years	10 years
1	2.16	4.93	11.63	9.99	11.21	6.88	6.44
2	1.91	5.30	12.59	11.09	12.36	7.62	7.21

**Performance Disclosures**

**Past performance is not a guide to current and future performance. The value of your investments and any income from them may fall as well as rise and you may not get back the full amount you invested.**

**ESG**

For more information on our approach to sustainable investing at J.P. Morgan Asset Management please visit

<https://am.jpmorgan.com/lu/esg>

## Portfolio analysis

Measurement	3 years	5 years
Correlation	0.95	0.95
Alpha (%)	-1.03	-0.69
Beta	0.98	0.97
Annualised volatility (%)	7.49	8.53
Sharpe ratio	0.81	0.45
Tracking error (%)	2.43	2.66
Information ratio	-0.42	-0.26

## Holdings

Top 10	Sector	% of assets
Republic of Italy	Future	7.7
US Department of the Treasury	Future	7.3
Kingdom of Great Britain	Future	6.8
Commonwealth of Australia	Future	5.8
LIFFE	EquityFuture	3.2
JPM USD High Yield Bond Active UCITS ETF	ETF	2.7
NVIDIA	Equity	2.6
Republic of Italy	Future	2.4
Microsoft	Equity	2.1
French Republic	Bond	2.0

## Bond quality breakdown (%)

AAA: 2.94%	Average duration: 3.45 yrs
AA: 46.00%	Yield to maturity (EUR): 3.47%
A: 33.41%	Average maturity: 4.16 yrs
BBB: 15.83%	
< BBB: 1.81%	

The shown yield-to-maturity is calculated as of 31/10/25 and does not take into account costs, changes in the portfolio, market fluctuations and potential defaults. The yield to maturity is an indication only and is subject to change.

Figures shown may not add up to 100 due to rounding.

Value at Risk (Var)	Fund	Benchmark
Var	5.55%	5.19%

## Current positioning (%)

Government Bonds	53.3
North America Equity	33.7
Emerging Markets Equity	6.5
Japan Equity	5.2
UK Equity	4.9
High Yield	3.9
Europe ex-UK Equity	3.8
Asia ex-Japan Equity	0.1
Cash*	-11.2

Figures shown may not add up to 100 due to rounding.

\* The cash position includes the cash offset from holding derivatives (equity and bond futures).

## Duration Breakdown

Region	Weighted duration (yrs)
Europe	1.5
US & Canada	1.0
Pacific Dev Ex Japan	0.5
Japan	0.3
Emerging	0.1
Total	3.4



## Key risks

The Sub-Fund is subject to **Investment risks** and **Other associated risks** from the techniques and securities it uses to seek to achieve its objective.

The table below explains how these risks relate to each other and the **Outcomes to the Shareholder** that could affect an investment in the Sub-Fund.

Investors should also read [Risk Descriptions](#) in the Prospectus for a full description of each risk.

### Investment risks *Risks from the Sub-Fund's techniques and securities*

Techniques	Securities	
Derivatives	Debt securities	- Unrated debt
Hedging	- Below investment grade debt	Emerging markets
Short positions	- Government debt	Equities
	- Investment grade debt	

### Other associated risks *Further risks the Sub-Fund is exposed to from its use of the techniques and securities above*

Credit	Interest rate	Market
Currency	Liquidity	

### Outcomes to the Shareholder *Potential impact of the risks above*

Loss	Volatility	Failure to meet the Sub-Fund's objective.
Shareholders could lose some or all of their money.	Shares of the Sub-Fund will fluctuate in value.	

## General Disclosures

Before investing, obtain and review the current prospectus, Key Information Document (KID) and any applicable local offering document. These documents, as well as the sustainability-related disclosures, the annual and semi-annual reports and the articles of incorporation, are available in English free from your financial adviser, your J.P. Morgan Asset Management regional contact, the fund's issuer (see below) or at [www.jpmm.lu](http://www.jpmm.lu). A summary of investor rights is available in English at <https://am.jpmm.com/lu/investor-rights>. J.P. Morgan Asset Management may decide to terminate the arrangements made for the marketing of its collective investment undertakings.

This material should not be considered as advice or an investment recommendation. Fund holdings and performance are likely to have changed since the report date.

To the extent permitted by applicable law, we may record telephone calls and monitor electronic communications to comply with our legal and regulatory obligations and internal policies. Personal data will be collected, stored and processed by J.P. Morgan Asset Management in accordance with our EMEA Privacy Policy [www.jpmm.com/emea-privacy-policy](http://www.jpmm.com/emea-privacy-policy)

For additional information on the sub-fund's target market please refer to the Prospectus.

**Risk Indicator** - The risk indicator assumes you keep the product for 5 year(s). The risk of the product may be significantly higher if held for less than the recommended holding period.

The ongoing charge is the charge used in the EU PRIIPs KID. This charge represents the total cost of managing and operating the fund, including management fees, administrative costs, and other expenses (excluding transaction costs). The breakdown of costs are the max as detailed in the fund's prospectus. For more detailed information, please refer to the fund's prospectus and the PRIIPs KID available on our website.

## Performance information

Source: J.P. Morgan Asset Management. Share class performance is shown based on the NAV (net asset value) of the share class with income (gross) reinvested including actual ongoing charges excluding any entry and exit fees.

The return of your investment may change as a result of currency fluctuations if your investment is made in a currency other than that used in the past performance calculation.

Indices do not include fees or operating expenses and you cannot invest in them.

The benchmark is for comparative purposes only unless specifically referenced in the Sub-Funds' Investment Objective and Policy.

## Holdings information

The yield displayed is in the base currency of the Sub-Fund. Actual share class yields may differ from the displayed yield due to currency effects.

VaR is a means of measuring the potential loss to a Sub-Fund due to market risk and is expressed as the maximum potential loss at a 99% confidence level. The holding period for the purpose of calculating global exposure is one month.

## Information Sources

Fund information, including performance calculations and other data, is provided by J.P. Morgan Asset Management (the marketing name for the asset management businesses of JPMorgan Chase & Co. and its affiliates worldwide).

**All data is as at the document date unless indicated otherwise.** © 2025 Morningstar. All Rights Reserved. The information contained herein: (1) is proprietary to Morningstar; (2) may not be copied or distributed; and (3) is not warranted to be accurate, complete or timely. Neither Morningstar nor its content providers are responsible for any damages or losses arising from any use of this information.

**Benchmark Source:** Information has been obtained from sources believed to be reliable but J.P. Morgan does not warrant its completeness or accuracy. The Index is used with permission. The Index may not be copied, used, or distributed without J.P. Morgan's prior written approval. Copyright 2023, J.P. Morgan Chase & Co. All rights reserved. The customised benchmark was created by J.P. Morgan Asset Management.

**Benchmark Source:** MSCI. Neither MSCI nor any other party involved in or related to compiling, computing or creating the MSCI data makes any express or implied warranties or representations with respect to such data (or the results to be obtained by the use thereof), and all such parties hereby expressly disclaim all warranties of originality, accuracy, completeness, merchantability or fitness for a particular purpose with respect to any of such data. Without limiting any of the foregoing, in no event shall MSCI, any of its affiliates or any third party involved, in or related to compiling, computing, or creating the data have any liability for any direct, indirect, special, punitive, consequential or any other damages (including lost profits) even if notified of the possibility of such damages. No further distribution or dissemination of the MSCI data is permitted without MSCI's express written consent.

## Issuer

JPMorgan Asset Management (Europe) S.à r.l., 6, route de Trèves, L-2633 Senningerberg, Luxembourg. B27900, corporate capital EUR 10.000.000.

## Definitions

**NAV** Net Asset Value of a fund's assets less its liabilities per Share.

**Overall Morningstar Rating™** assessment of a fund's past performance, based on both return and risk and shows how similar investments compare with their competitors. Investment decisions should not be based on a high rating alone.

**Correlation** measures the strength and direction of the relationship between movements in fund and benchmark returns. A correlation of 1.00 indicates that fund and benchmark returns move in lockstep in the same direction.

**Alpha (%)** a measure of excess return generated by a manager compared to the benchmark. An alpha of 1.00 indicates that a fund has outperformed its benchmark by 1%.

**Beta** measures a fund's sensitivity to market movements (as represented by the fund's benchmark). A beta of 1.10 suggests the fund could perform 10% better than the benchmark in up markets and 10% worse in down markets, assuming all other factors remain constant. Usually the higher betas represent riskier investments.

**Annualised volatility (%)** measures the extent to which returns vary up and down over a given period.

**Sharpe ratio** performance of an investment adjusting for the amount of risk taken (compared a risk-free investment). The higher the Sharpe ratio the better the returns compared to the risk taken.

**Tracking error (%)** measures how much a fund's returns deviate from those of the benchmark. The lower the number the closer the

fund's historic performance has followed its benchmark.

**Information ratio** measures if a manager is outperforming or underperforming the benchmark and accounts for the risk taken to

achieve the returns. A manager who outperforms a benchmark by 2% p.a. will have a higher IR than a manager with the same outperformance but who takes more risk.



# Important Information

**Confidential: Not For Retail Use or Further Distribution – This communication has been prepared exclusively for institutional, wholesale, professional clients and qualified investors only, as defined by local laws and regulations.**

This document is meant for informational purposes only and is intended solely for the person to whom it is delivered. It is confidential and may not be reproduced or distributed, in whole or in part, to any third parties and in any jurisdiction without the express prior written consent of JPMorgan Asset Management. It does not constitute investment advice and it should not be treated as an offer to sell or a solicitation of an offer to buy any fund, security, investment product or service. The information contained herein does not constitute J.P. Morgan research and should not be treated as such.

Investment involves risks. Investments in funds are not deposits and are not considered as being comparable to deposits. Past performance is not a guarantee or necessarily indicative of future results and investors may not get back the full or any part of the amount invested. Dividend distributions if any are not guaranteed and are made at the manager's discretion. Fund's net asset value may likely have high volatility due to its investment policies or portfolio management techniques. Funds which are invested in emerging markets, smaller companies and financial derivative instruments may also involve higher risks and are usually more sensitive to price movements. Any applicable currency hedging process may not give a precise hedge and there is no guarantee that any hedging will be successful. Investors in a currency hedged fund or share class may have exposure to currencies other than the currency of their fund or share class.

Not all investment ideas referenced are suitable for all investors. Investors should read offering documents and make their own evaluation or seek independent advice prior to making any investment. Opinions, estimates, forecasts and statements are based on current market conditions and are subject to change without notice. The information provided herein should not be assumed to be accurate or complete and you should conduct your own verification. References to specific securities, asset classes and financial markets and any forecast contained herein are for illustrative purposes only and are not to be relied upon as advice or interpreted as a recommendation. J.P. Morgan accepts no legal responsibility or liability for any matter or opinion expressed in this material.

**Singapore:** In Singapore this material is issued by JPMorgan Asset Management (Singapore) Limited (Co. Reg. No. 197601586K). This advertisement or publication has not been reviewed by the Monetary Authority of Singapore. This document has not been registered as a prospectus with the Monetary Authority of Singapore. Accordingly, this document or any other material in connection with the offer or sale, or invitation for subscription or purchase, of the fund(s) mentioned in this document may not be circulated or distributed, nor may such fund(s) be offered or sold, or be made the subject of an invitation for subscription or purchase, whether directly or indirectly, to persons in Singapore other than (i) to an institutional investor pursuant to Section 304 of the Securities and Futures Act, Chapter 289 of Singapore (the "SFA") or (ii) otherwise pursuant to, and in accordance with the conditions of, any other applicable provision of the SFA.

**Malaysia:** This document is provided in response to your request. This document is for informational purposes only and does not constitute an invitation or offer to the public. AS THE RECOGNITION BY THE MALAYSIAN SECURITIES COMMISSION PURSUANT TO SECTION 212 OF THE MALAYSIAN CAPITAL MARKETS AND SERVICES ACT 2007 HAS NOT BEEN / WILL NOT BE OBTAINED NOR WILL THIS DOCUMENT BE LODGED OR REGISTERED WITH THE MALAYSIAN SECURITIES COMMISSION, the funds mentioned are not being and will not be deemed to be issued, made available, offered for subscription or purchase in Malaysia and neither this document or other material in connection therewith should be distributed, caused to be distributed or circulated in Malaysia.

**Philippines:** THIS MATERIAL IS PROVIDED IN RESPONSE TO YOUR REQUEST. Under Republic Act No. 8799, known as the Securities Regulation Code of the Philippines (the "Code"), and its implementing rules, securities, such as the Securities, are not permitted to be sold or offered for sale or distribution within the Philippines unless such securities are approved for registration by the Securities and Exchange Commission of the Philippines ("SEC") or are otherwise exempt securities or sold pursuant to an exempt transaction. To the extent that the Code is deemed applicable to any offering of Securities to Philippine investors, the Securities are being offered pursuant to an exempt transaction under Section 10.1(f) of the Code. THE SECURITIES DESCRIBED HEREIN HAVE NOT BEEN REGISTERED WITH THE SECURITIES AND EXCHANGE COMMISSION UNDER THE SECURITIES REGULATION CODE OF THE PHILIPPINES. ANY FUTURE OFFER OR SALE THEREOF IS SUBJECT TO THE REGISTRATION REQUIREMENTS UNDER THE CODE UNLESS SUCH OFFER OR SALE QUALIFIES AS AN EXEMPT TRANSACTION.

**Brunei:** The document is provided in response to your request. This prospectus relates to a private collective investment scheme which is not subject to any form of domestic regulations by the Autoriti Monetari Brunei Darussalam ("Authority"). This prospectus is intended for distribution only to specific classes of investors as specified in section 20 of the Securities Market Order, 2013, and must not, therefore, be delivered to, or relied on by, a retail client. The Authority is not responsible for reviewing or verifying any prospectus or other documents in connection with this collective investment scheme. The Authority has not approved this prospectus or any other associated documents nor taken any steps to verify the information set out in this prospectus and has no responsibility for it. The units to which this prospectus relates may be illiquid or subject to restrictions on their resale. Prospective purchasers of the units offered should conduct their own due diligence on the units.

**Thailand:** The document is provided in response to your request. The document has not been approved by the Securities and Exchange Commission which takes no responsibility for its contents. No offer to the public to purchase the Funds will be made in Thailand and this document is intended to be read by the addressee only and must not be passed to, issued to, or shown to the public generally.

**Indonesia:** The document is provided in response to your request. This material does not constitute an offer to sell nor a solicitation to buy securities in Indonesia.

**India:** This material is provided in response to your request. The interests in the Fund(s) mentioned in this document is/are not being offered to the Indian public for sale or subscription but are being privately placed with a limited number of Sophisticated Private and Institutional investors. The interests in the Fund(s) is/are not registered or approved by the Securities and Exchange Board of India, the Reserve Bank of India or any other governmental/ regulatory authority in India. This document is not and should not be deemed to be a 'prospectus' as defined under the provisions of the Companies Act, 2013 (18 of 2013) and it will not be filed with any regulatory authority in India. Pursuant to the Foreign Exchange Management Act, 1999 and the regulations issued there under, any investor resident in India may be required to obtain prior special permission of the Reserve Bank of India before making investments outside of India, including any investment in the Fund. The Fund(s) mentioned in this document, have/ has neither obtained any approval from the Reserve Bank of India or any other regulatory authority in India nor intends to do so, hence any eligible investor who is resident of India will be entirely responsible for determining their eligibility to invest in the interests in the Fund(s).

To the extent permitted by applicable law, we may record telephone calls and monitor electronic communications to comply with our legal and regulatory obligations and internal policies. Personal data will be collected, stored and processed by J.P. Morgan Asset Management in accordance with our privacy policies at <https://am.jpmorgan.com/global/privacy>.

J.P. Morgan Asset Management is the brand for the asset management business of JPMorgan Chase & Co. and its affiliates worldwide. JPMorgan Chase & Co. All rights reserved.



## ปัจจัยความเสี่ยงของกองทุนรวม

### 1. ความเสี่ยงทางการตลาด (Market Risk)

คือความเสี่ยงจากความผันผวนของราคาหลักทรัพย์ที่กองทุนเข้าไปลงทุน ที่เกิดจากการเปลี่ยนแปลงในสถานะการณ์ทางเศรษฐกิจ สังคม และการเมือง ซึ่งเป็นความเสี่ยงที่ไม่สามารถควบคุมได้

#### แนวทางการบริหารเพื่อลดความเสี่ยง :

บริษัทจัดการจะวิเคราะห์ปัจจัยต่างๆรวมทั้งติดตามสถานการณ์การเปลี่ยนแปลงที่อาจมีผลกระทบต่อราคาและยังสามารถปรับสัดส่วนการลงทุนในกองทุนหลักได้ตามความเหมาะสม ซึ่งจะเป็นการช่วยลดผลกระทบต่อราคามูลค่าทรัพย์สินสุทธิของกองทุน

### 2. ความเสี่ยงจากอัตราแลกเปลี่ยน (Foreign Exchange Risk)

ความเสี่ยงที่การลงทุนอาจประสบกับความผันผวนของอัตราแลกเปลี่ยน ทำให้อัตราผลตอบแทนในรูปเงินบาทผันผวนหากค่าเงินตราสกุลต่างประเทศมีการเปลี่ยนแปลง

#### แนวทางการบริหารเพื่อลดความเสี่ยง:

กองทุนอาจใช้เครื่องมือป้องกันความเสี่ยงดังกล่าวโดยขึ้นอยู่กับดุลยพินิจของบริษัทจัดการ ซึ่งอาจมีต้นทุนสำหรับการทำธุรกรรมป้องกันความเสี่ยง โดยอาจทำให้ผลตอบแทนของกองทุนโดยรวมลดลงจากต้นทุนที่เพิ่มขึ้น

### 3. ความเสี่ยงจากการลงทุนในสัญญาซื้อขายล่วงหน้า (Derivatives Risk)

สัญญาซื้อขายล่วงหน้าบางประเภทอาจมีการขึ้นลงผันผวน (volatile) มากกว่าหลักทรัพย์พื้นฐาน ดังนั้นหากกองทุนมีการลงทุนในหลักทรัพย์ดังกล่าวย่อมทำให้สินทรัพย์มีความผันผวนมากกว่าการลงทุนในหลักทรัพย์พื้นฐาน (Underlying Security)

#### แนวทางการบริหารเพื่อลดความเสี่ยง :

กองทุนอาจจะลงทุนในสัญญาซื้อขายล่วงหน้าที่มีตัวแปรเป็นอัตราแลกเปลี่ยน โดยมีวัตถุประสงค์เพื่อลดความเสี่ยงเท่านั้น ทั้งนี้การป้องกันความเสี่ยงดังกล่าวอาจทำให้กองทุนเสียโอกาสที่จะได้รับผลตอบแทนที่เพิ่มขึ้นหากอัตราแลกเปลี่ยนมีการเปลี่ยนแปลงไปในทางตรงข้ามกับที่กองทุนคาดการณ์ไว้อย่างไรก็ดีกองทุนยังคงมีความเสี่ยงจากการที่คู่สัญญาไม่ปฏิบัติตาม ดังนั้น เพื่อลดความเสี่ยงดังกล่าวกองทุนจะทำธุรกรรมกับธนาคารที่มีกฎหมายเฉพาะจัดตั้งขึ้นหรือธนาคารพาณิชย์

### 4. ความเสี่ยงของประเทศที่ลงทุน (Country Risk)

คือ ความเสี่ยงที่เกิดจากการเปลี่ยนแปลงภายในประเทศที่กองทุนเข้าไปลงทุน เช่น การเปลี่ยนแปลงผู้บริหาร, การเปลี่ยนแปลงนโยบายทางด้านเศรษฐกิจ หรือสาเหตุอื่นๆ จนทำให้ไม่สามารถชำระค่าขายคืนหน่วยลงทุนได้ตรงตามระยะเวลาที่กำหนด

#### แนวทางการบริหารเพื่อลดความเสี่ยง:

บริษัทจัดการจะวิเคราะห์ปัจจัยต่างๆรวมทั้งติดตามสถานการณ์การเปลี่ยนแปลงที่อาจมีผลกระทบต่อราคาและยังสามารถปรับสัดส่วนการลงทุนในกองทุนหลักได้ตามความเหมาะสม ซึ่งจะเป็นการช่วยลดผลกระทบต่อราคามูลค่าทรัพย์สินสุทธิของกองทุน

5. **ความเสี่ยงจากข้อจำกัดการนำเงินลงทุนกลับประเทศ (Repatriation Risk)** เป็นความเสี่ยงที่เกิดจากการเปลี่ยนแปลงภายในประเทศที่กองทุนลงทุน เช่น การเปลี่ยนแปลงทางการเมือง ข้อกำหนด กฎเกณฑ์ หรือนโยบายต่างๆ ของรัฐบาลในการบริหารประเทศ ซึ่งรวมถึงสาเหตุอื่นๆ ที่อาจทำให้ไม่สามารถชำระหนี้ได้ตรงตามระยะเวลาที่กำหนด รวมถึงอาจทำให้กองทุนเกิดความเสี่ยงจากสัญญาสวอป และ/หรือสัญญาฟอเวิร์ดได้ ซึ่งมีผลต่อผลตอบแทนที่กองทุนจะได้รับจากการลงทุน

**แนวทางการบริหารเพื่อลดความเสี่ยง :**

บริษัทจัดการจะติดตามสถานการณ์การเปลี่ยนแปลงการเมือง ภาวะเศรษฐกิจ ภาวะตลาดเงิน ตลาดทุน ตลอดจนปัจจัยพื้นฐานต่างๆ ของประเทศที่กองทุนลงทุนอย่างใกล้ชิด เพื่อประเมินความเสี่ยงจากการลงทุนในประเทศนั้นๆ เพื่อลดความเสี่ยงในสวนนี้

6. **ความเสี่ยงจากการดำเนินธุรกิจของผู้ออกตราสาร (Business Risk)**

ความสามารถในการดำเนินธุรกิจของผู้ออกตราสารดังกล่าว จะบ่งบอกถึงถึงศักยภาพ ความสามารถในการทำกำไรฐานะการเงิน และความเข้มแข็งขององค์กรธุรกิจ ซึ่งจะถูกสะท้อนออกมาในราคาของหุ้นที่มีการขึ้นหรือลงในขณะนั้นๆ

**แนวทางการบริหารความเสี่ยง :**

กองทุนจะกระจายการลงทุนไปในบริษัทต่างๆ ทั้งที่อยู่ในกลุ่มธุรกิจเดียวกัน และกลุ่มธุรกิจอื่นๆ และผู้จัดการกองทุน จะทำการติดตามและศึกษาความเป็นไปของธุรกิจและอุตสาหกรรมต่างๆ อย่างใกล้ชิด ซึ่งจะช่วยให้กองทุนสามารถบริหารความเสี่ยงได้ดียิ่งขึ้น โดยหากมีการเปลี่ยนแปลงผลการดำเนินงานหรือฐานะทางการเงินของบริษัทผู้ออกตราสารอย่างมีนัยสำคัญจะได้ พิจารณาปรับเปลี่ยนแผนการลงทุนในหลักทรัพย์อย่างเหมาะสม

# AIMC Category Performance Report

Report as of 30/11/2025



## Return statistics for Thailand Mutual Funds

AIMC Category	Average Trailing Return (%)							Average Calendar Year Return (%)				
	YTD	3M	6M	1Y	3Y	5Y	10Y	2020	2021	2022	2023	2024
Aggressive Allocation	-4.32	0.62	5.94	-6.19	-4.08	-0.53	0.17	-3.71	17.78	-4.53	-7.42	0.46
ASEAN Equity	2.42	0.11	6.02	0.44	2.35	5.13	0.70	-0.64	24.80	-13.86	1.56	4.16
Asia Pacific Ex Japan	21.19	7.32	16.93	18.89	6.18	0.65	3.51	22.91	1.18	-22.07	-0.41	2.73
China Equity - A Shares	17.00	0.49	20.25	18.43	-0.36	-6.86	0.91	25.04	-5.44	-29.54	-20.95	5.66
Commodities Energy	-12.53	-5.68	1.96	-9.66	-6.88	10.43	-0.03	-31.41	65.84	13.47	-6.87	2.67
Commodities Precious Metals	50.74	20.30	23.17	47.45	26.44	15.10	11.13	22.38	-1.94	-0.75	9.13	20.70
Conservative Allocation	2.76	0.63	2.83	2.15	1.36	0.62	1.10	-1.01	3.30	-3.64	-0.77	2.05
Emerging Market	21.05	6.91	14.77	18.45	7.48	0.12	2.93	9.34	-3.39	-24.38	4.34	0.73
Emerging Market Bond Discretionary F/X Hedge or Unhedge	1.98	-1.78	1.18	0.99	4.44	-1.59	1.21	3.86	-4.60	-16.35	0.95	6.59
Energy	-8.71	-3.71	4.06	-11.94	-11.30	-3.81	3.29	-6.55	10.38	4.80	-17.51	-10.22
Equity General	-10.17	0.21	6.14	-11.88	-7.87	-1.34	0.10	-9.61	19.03	1.13	-11.89	-1.94
Equity Large Cap	-7.62	1.07	8.18	-9.25	-5.32	0.07	1.15	-11.22	16.03	1.98	-9.68	1.34
Equity Small - Mid Cap	-24.90	-5.02	-1.03	-26.49	-16.14	-4.83	-1.57	8.03	41.13	-4.54	-13.32	-10.71
European Equity	9.71	2.01	0.58	9.01	8.08	6.57	5.09	4.62	24.32	-19.18	12.78	6.42
Foreign Investment Allocation	7.90	3.03	7.27	5.67	5.07	1.44	2.99	6.41	6.90	-17.03	5.10	4.18
Fund of Property Fund - Foreign	5.41	0.18	3.58	-1.60	-0.66	-1.34	0.73	-6.59	19.71	-25.78	0.76	-6.07
Fund of Property Fund - Thai	4.76	8.44	5.59	4.21	1.22	-1.65	1.33	-22.42	-0.22	-6.52	-8.90	5.35
Fund of Property fund -Thai and Foreign	8.16	4.44	7.82	5.68	1.06	-0.95	2.78	-10.25	2.89	-11.27	-1.75	-2.84
Global Bond Discretionary F/X Hedge or Unhedge	3.16	1.14	2.77	1.93	2.29	-0.28	-0.54	3.62	1.13	-10.76	2.91	0.54
Global Bond Fully F/X Hedge	4.93	1.30	3.18	3.54	2.38	-0.90	0.35	4.32	0.11	-11.41	2.96	0.53
Global Equity	8.80	2.26	8.22	5.90	9.42	3.21	5.59	19.50	12.50	-26.93	12.61	4.82
Global Equity - Alternative Energy	30.55	10.12	30.51	21.92	-2.50	2.44	-	-	3.05	-24.42	-7.94	-16.30
Global Equity - Consumer Goods and Services	3.36	0.59	5.66	2.22	5.74	-4.36	3.07	40.42	-3.47	-32.19	9.05	10.24
Global Equity - Infrastructure	16.32	4.31	4.74	9.85	4.41	5.86	3.90	-7.34	18.09	-8.55	0.86	1.70
Global Equity Fully FX Risk Hedge	13.35	2.47	8.97	10.39	11.27	6.13	6.58	12.76	15.15	-26.77	16.62	10.38
Greater China Equity	20.26	-0.12	13.93	21.56	2.59	-6.88	0.82	19.36	-12.55	-27.20	-20.20	6.94
Health Care	13.80	16.17	22.18	5.37	0.24	1.67	4.04	22.59	7.71	-19.54	-0.96	-7.28
High Yield Bond	3.11	0.44	2.36	2.48	4.27	1.63	2.72	3.44	4.76	-11.58	5.39	4.99
India Equity	-6.23	1.58	-2.83	-8.47	3.96	7.65	6.35	12.07	26.23	-12.85	16.93	10.37
Japan Equity	21.46	10.22	20.67	24.70	16.34	10.71	7.91	10.09	6.73	-10.31	20.35	15.09
Long Term General Bond	5.10	-2.92	1.43	5.33	3.26	1.95	2.06	2.26	-0.26	-1.11	1.01	5.36
Mid Term General Bond	3.13	-0.26	1.30	3.28	2.67	1.76	1.68	1.03	0.67	0.14	1.61	2.85
Mid Term Government Bond	2.78	-1.01	1.05	2.98	2.10	1.24	1.22	1.40	-0.18	-0.06	0.81	2.87
Moderate Allocation	2.37	1.47	4.96	1.00	1.03	0.99	1.04	-3.46	7.56	-5.37	-1.48	2.39
Money Market General	1.43	0.30	0.66	1.60	1.67	1.11	1.04	0.55	0.20	0.38	1.43	2.06
Money Market Government	1.31	0.28	0.61	1.48	1.59	1.04	0.98	0.42	0.18	0.35	1.38	1.98
Other Global Sector Equity	20.90	3.52	16.32	14.03	4.16	8.85	7.22	9.13	16.37	-22.72	3.42	-0.38
SET 50 Index Fund	-5.71	2.44	11.28	-6.93	-3.46	0.62	1.93	-13.21	10.81	4.94	-11.29	6.24
Short Term General Bond	1.78	0.32	0.83	1.96	1.88	1.28	1.18	0.49	0.42	0.55	1.53	2.11
Short Term Government Bond	1.33	0.27	0.63	1.51	1.54	0.99	0.93	0.50	-0.05	0.39	1.18	1.98
Technology Equity	20.04	5.97	21.30	17.72	22.82	4.70	-	50.15	8.42	-43.73	47.90	18.49

<b>Thai Free Hold</b>	1.89	-0.46	0.45	2.19	2.37	1.99	2.47	-2.43	-0.63	3.30	2.56	0.97
<b>Thai Mixed (between free and lease hold)</b>	1.67	0.38	0.74	3.10	-0.07	-0.75	2.11	3.19	-1.48	-4.43	-1.13	-3.10
<b>US Equity</b>	9.16	3.36	11.77	6.97	14.87	6.67	9.08	20.70	22.20	-30.01	25.04	18.66
<b>Vietnam Equity</b>	7.05	-6.38	16.12	9.09	7.86	4.88	-	15.86	45.20	-32.85	7.81	8.60