

United Global Balanced Fund (UGBF)

UGBF-A

Fund Type / AIMC Category

- Mixed Fund
- Feeder Fund / Fund with Foreign Investment related Risks
- Foreign Investment Allocation

Investment Policy and Strategy

- The Fund will mainly invest in JPMorgan Investment Funds – Global Balanced Fund class: JPM Global Balanced C (acc) - USD (hedged) (Master Fund)
- The master fund is managed by JPMorgan Asset Management (Europe) S.à r.l
- The fund seeks to closely track the performance of the master fund, which employs an active management strategy.

Risk Level

Low **1 2 3 4 5 6 7 8** High

Moderate to high Risk

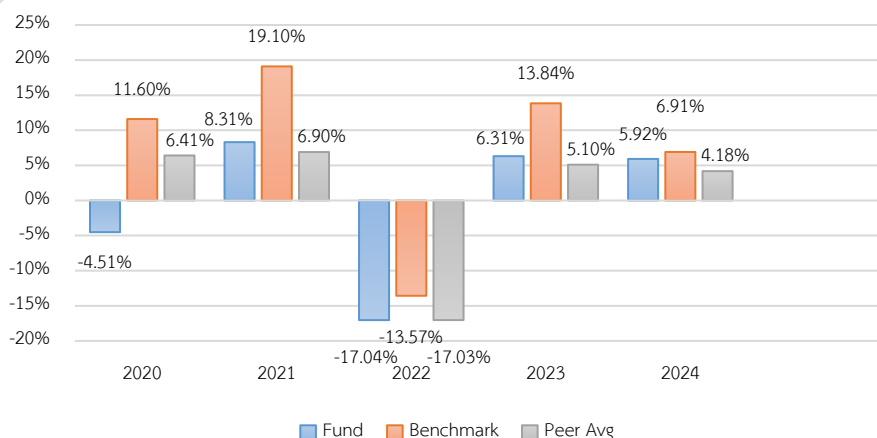
Investment in equities, fixed income instruments and / or alternative assets with equity exposure not exceeding 80% of NAV.

Fund Information

Registered Date	2 February 2016
Class Inception Date	2 February 2016
Dividend Payment Policy	No dividend
Fund Duration	Indefinite

Fund Manager	Since
Mr. Waroon Saptaweekul	18 September 2023

Calendar Year Performance (% p.a.)



Fund Performance (%)

	YTD	3 Months	6 Months	1 Year*
Fund Return	3.16	3.84	1.68	2.79
Benchmark Return	4.10	4.21	2.45	4.02
Peer Average	4.83	4.15	3.28	4.16
Fund Standard Deviation	7.57	2.61	6.91	8.64
Benchmark Standard Deviation	7.69	2.73	7.00	8.77

	3 Years*	5 Years *	10 Years *	Since Inception *
Fund Return	3.37	1.64	-	1.32
Benchmark Return	7.46	5.90	-	5.42
Peer Average	3.60	1.49	-	-
Fund Standard Deviation	7.94	7.78	-	7.80
Benchmark Standard Deviation	9.16	9.04	-	8.02

Remark : * % p.a.

Benchmark

The performance of the master fund is adjusted for foreign exchange hedging costs to reflect the value in Thai Baht, based on the return calculation date, with a hedging ratio of 100.00%.

Remark:

The fund uses the stated benchmark solely for the purpose of comparing the fund's performance against the benchmark index.

Warning:

- Investment in Mutual Fund is not bank deposit.
- Past performance is not indicative of future results.

Certified by Thai Private Sector Collective Action

Against Corruption: Declared CAC

Investors can study

Liquidity Risk

Management tools in the full prospectus.

Full Prospectus



www.uobam.co.th

Subscription

Subscription date : Every business day
 Business hours : 08:30 a.m. - 03:30 p.m.
 Min. initial subscription : None
 Min. subsequent subscription : None

Redemption

Redemption date : Every business day
 Business hours : 08:30 a.m. - 02:00 p.m.
 Min. redemption : None
 Min. holding balance : None
 Settlement period : T+4 business days
 after the redemption date.

Remark:

1. The fund will conduct automatic redemptions up to 12 times per year. The Management Company will publish the redemption schedule on its official website.
2. The Settlement period does not include non-business days in foreign countries.

Statistical Data

Maximum Drawdown -20.00 %
 Recovering Period 1 year 7 months
 FX Hedging 91.50 %
 Portfolio Turnover Ratio 0.05

Fees charged to the Fund (% p.a. of NAV / Include VAT)

Fees	Max.	Actual
Management Fee	2.1400	0.7490
Total expenses	5.3500	0.9978

Remark:

The management company may adjust the actual fees charged to align with its investment strategy or management expenses.

Fees charged to unitholders (% of the unit price / Include VAT)

Fees	Max.	Actual
Front-end Fee	2.00	1.50
Back-end Fee	None	None
Switching-in Fee	2.00	1.50
Switching-out Fee	None	None
Transfer fee	None	None

Remark:

1. In case of switching in, the Management Company will not charge front-end fee.
2. The Management Company may adjust the actual fees charged to align with its investment strategy or management expenses.
3. The Management Company may apply different fee structures to each investor group.

Asset Allocation

breakdown	% NAV
1. Unit Trust	99.31
2. Other Asset and Liability	0.69

Top 5 Holdings

holding	% NAV
1. JPMorgan Investment Funds - Global Balanced Fund	99.31

Investment in the other funds exceeding 20% of NAV

Fund name : JPMorgan Investment Funds - Global
Balanced Fund

ISIN code : LU0957039927

Bloomberg code : JFMUCHU LX

Definition

Maximum Drawdown : The percentage of the fund's maximum loss in the past 5 years (or since the fund's inception if it is launched for less than 5 years) which is measured from the highest NAV per unit to the lowest NAV per unit during such period. Maximum Drawdown is an indicator of the risk of loss from investing in the fund.

Recovering Period : The length of time that the fund takes in recovering from the point of maximum loss to earning back the initial investment.

FX Hedging : The percentage of foreign currency investment with FX hedging.

Portfolio Turnover Ratio : The frequency of securities trading in the fund portfolio over a certain period, calculated by taking the lower value between the sum of the value of securities purchased and the sum of the value of securities sold of the fund in 1 year period divided by the average NAV in the same period. A fund with high Portfolio Turnover Ratio indicates frequent securities trading by fund manager resulting in high trading costs. Therefore, it is necessary to compare with the performance of the fund in order to assess the worthiness of such securities trading.

Sharpe Ratio : A ratio between the excess return of a fund and the risk of investment. The Sharpe ratio reveals the average investment return, minus the risk-free rate of return, divided by the standard deviation of returns for the fund. The Sharpe ratio reflects the extra return that should be received by the fund to compensate the amount of risk taken in investment. The fund with a higher Sharpe ratio is considered superior to other funds in terms of management efficiency since it provides higher excess return under the same risk level.

Alpha : The excess return of a fund relative to the return of a benchmark index. A fund with high alpha indicates that it is able to beat the performance of its corresponding benchmark which is a result of the capabilities of the fund manager in selecting appropriate securities for investment or making investment in a timely manner.

Beta : A measure of the degree and direction of volatility of the rate of return of assets in the investment portfolio of the fund compared to the changes in the overall market. A beta of less than 1.0 implies that the rate of return of the fund's assets is less volatile than that of the securities in the broader market whereas a beta of greater than 1.0 implies that the rate of return of the fund's assets is more volatile than that of the broader market.

Tracking Error : The efficiency of the fund to imitate its return to benchmark. Low Tracking Error means the fund is effective in generating return close to benchmark. High Tracking Error means the fund generates return more deviate from benchmark.

Yield to Maturity : The rate of return earned on a bond held to maturity, calculated from the interest expected to receive in the future over that bond duration and paid back principal discounted to the present value. It is used to measure return of fixed income funds by calculating the weighted average of Yield to Maturity of each bond that the fund invests. As Yield to Maturity has standard unit in percentage per annum, it can be used to compare the returns between fixed income funds that have an investment policy of holding bonds until maturity and similar investment characteristics.

“Important Notice: This Document has been translated from Thai. If there is any inconsistency or ambiguity between the English version and the Thai version, the Thai version shall prevail.”



JPMorgan Investment Funds -

Global Balanced Fund

Class: JPM Global Balanced C (acc) - USD (hedged)

Fund overview

ISIN	Sedol	Bloomberg	Reuters
LU0957039927	BCT56V2	JFMUCHU LX	LU0957039927.LUF

Investment objective: To provide long-term capital growth and income by investing primarily in companies and debt securities issued or guaranteed by governments or their agencies, globally, using derivatives where appropriate.

Investment approach

- Multi-asset approach, combining asset allocation with bottom-up expertise leveraged from specialists from JPMorgan Asset Management's global investment platform.
- Actively managed implementation of equity and bond strategies, with a balanced risk profile.

Portfolio manager(s)	Share class	Class launch
Katy Thorneycroft	currency USD	27 Nov 2013
Jonathan Cummings	Fund assets	Domicile Luxembourg
Gareth Witcomb	EUR 2702.5m	Entry/exit charges
Fund reference	Fund launch	Entry charge (max) 0.00%
currency EUR	19 Jan 1995	Exit charge (max) 0.00%
	NAV USD 273.01	Ongoing charge 0.90%

ESG information**ESG approach - ESG Promote**

Promotes environmental and / or social characteristics.

SFDR classification: Article 8

"Article 8" strategies promote social and/or environmental characteristics, but do not have sustainable investing as a core objective.

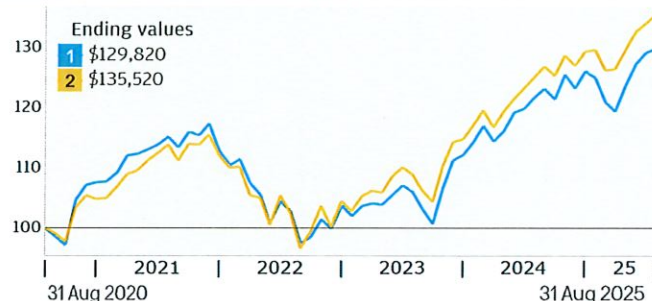
Fund ratings As at 31 August 2025

Overall Morningstar Rating™ ★★★★★

Morningstar Category™ USD Moderate Allocation

Performance1 **Class:** JPM Global Balanced C (acc) - USD (hedged)

2 **Benchmark:** 50% J.P. Morgan Government Bond Index Global (Total Return Gross) Hedged to USD / 45% MSCI World Index (Total Return Net) Hedged to USD / 5% MSCI Emerging Markets Index (Total Return Net) in EUR Cross Hedged to USD

Growth of USD 100,000 Calendar years**Quarterly rolling 12-month performance (%)**

As at end of June 2025

	2020/2021	2021/2022	2022/2023	2023/2024	2024/2025
1	20.64	-10.86	4.66	12.99	6.76
2	16.42	-9.58	7.94	11.79	9.28

Calendar Year Performance (%)

	2015	2016	2017	2018	2019	2020	2021	2022	2023	2024
1	1.22	3.61	12.91	-3.57	17.24	12.28	9.52	-14.84	11.35	10.74
2	1.57	7.06	10.58	-1.94	17.70	10.83	9.55	-13.29	14.10	11.12

Return (%)

	Cumulative				Annualised			
	1 month	3 months	1 year	YTD	3 years	5 years	10 years	
1	0.50	4.96	6.73	5.35	8.08	5.36	6.24	
2	1.12	4.48	8.45	6.69	9.76	6.27	7.07	

Performance Disclosures

Past performance is not a guide to current and future performance. The value of your investments and any income from them may fall as well as rise and you may not get back the full amount you invested.

ESG

For more information on our approach to sustainable investing at J.P. Morgan Asset Management please visit

<https://am.jpmorgan.com/lu/esg>

Portfolio analysis

Measurement	3 years	5 years
Correlation	0.95	0.95
Alpha (%)	-1.53	-0.86
Beta	0.95	0.97
Annualised volatility (%)	8.17	8.55
Sharpe ratio	0.40	0.30
Tracking error (%)	2.63	2.66
Information ratio	-0.59	-0.32

Holdings As at 31 July 2025

Top 10	Sector	% of assets
US Department of the Treasury	Future	8.5
Republic of Italy	Future	4.8
Republic of Italy	Future	4.5
Kingdom of Great Britain	Future	3.2
French Republic	Bond	3.1
US Department of the Treasury	Future	3.0
JPM USD High Yield Bond Active UCITS ETF	ETF	2.6
Microsoft	Equity	2.5
NVIDIA	Equity	2.5
Technology Select Sector Index	EquityFuture	2.1

Bond quality breakdown (%) As at 31 July 2025

AAA: 4.99%	Average duration: 3.56 yrs
AA: 51.16%	Yield to maturity (EUR): 3.43%
A: 21.80%	Average maturity: 4.33 yrs
BBB: 17.55%	
< BBB: 4.49%	
Non Rated: 0.01%	

The shown yield-to-maturity is calculated as of 31/07/25 and does not take into account costs, changes in the portfolio, market fluctuations and potential defaults. The yield to maturity is an indication only and is subject to change.

Figures shown may not add up to 100 due to rounding.

Value at Risk (Var)

As at 29 August 2025	Fund	Benchmark
Var	5.69%	5.19%

Current positioning (%)

Government Bonds	49.9
North America Equity	33.0
Emerging Markets Equity	6.3
Europe ex-UK Equity	5.7
High Yield	4.6
Japan Equity	3.7
UK Equity	3.0
Asia ex-Japan Equity	0.2
Cash*	-6.5

Figures shown may not add up to 100 due to rounding.

* The cash position includes the cash offset from holding derivatives (equity and bond futures).

Duration Breakdown

Region	Weighted duration (yrs)
US & Canada	1.6
Europe	1.5
Japan	0.3
Emerging	0.1
Pacific Dev Ex Japan	0.1
Total	3.6

Key risks

The Sub-Fund is subject to **Investment risks** and **Other associated risks** from the techniques and securities it uses to seek to achieve its objective.

The table on the right explains how these risks relate to each other and the **Outcomes to the Shareholder** that could affect an investment in the Sub-Fund.

Investors should also read [Risk Descriptions](#) in the Prospectus for a full description of each risk.

Investment risks *Risks from the Sub-Fund's techniques and securities*

Techniques	Securities
Derivatives	Debt securities
Hedging	- Below investment grade debt
Short positions	- Government debt
	- Investment grade debt
	- Unrated debt
	Emerging markets
	Equities

Other associated risks *Further risks the Sub-Fund is exposed to from its use of the techniques and securities above*

Credit	Interest rate	Market
Currency	Liquidity	

Outcomes to the Shareholder *Potential impact of the risks above*

Loss	Volatility	Failure to meet the Sub-Fund's objective.
Shareholders could lose some or all of their money.	Shares of the Sub-Fund will fluctuate in value.	

General Disclosures

Before investing, obtain and review the current prospectus, Key Investor Information Document (KIID), and any applicable local offering document. These documents as well as the sustainability-related disclosures, annual and semi-annual reports and the articles of incorporation, are available in English from your financial adviser, your J.P. Morgan Asset Management regional contact, the fund's issuer (see below) or at <https://am.jpmorgan.com/gb/en/asset-management/per/>. A summary of investor rights is available in English at <https://am.jpmorgan.com/lu/investor-rights>. J.P. Morgan Asset Management may decide to terminate the arrangements made for the marketing of its collective investment undertakings. This material should not be considered as advice or an investment recommendation. Fund holdings and performance are likely to have changed since the report date.

To the extent permitted by applicable law, we may record telephone calls and monitor electronic communications to comply with our legal and regulatory obligations and internal policies. Personal data will be collected, stored and processed by J.P. Morgan Asset Management in accordance with our EMEA Privacy Policy www.jpmorgan.com/emea-privacy-policy.

For additional information on the sub-fund's target market please refer to the Prospectus.

The risk indicator is based on the historic volatility of the Net Asset Value of the Share Class over the last five years and may not be a reliable indication of the future risk profile of the Share Class. The risk and reward category shown above is not guaranteed to remain unchanged and may change over time. A Share Class with the lowest risk rating does not mean a risk-free investment. See the Key Investor Information Document (KIID) for details.

The possible difference between the current ongoing charge as stated in this document and those mentioned in the KIID, is caused by the fact that the costs mentioned in the KIID are an estimate based on the actual costs incurred over the past year.

Performance information

Source: J.P. Morgan Asset Management. Share class performance is shown based on the NAV (net asset value) of the share class with income (gross) reinvested including actual ongoing charges excluding any entry and exit fees.

The return of your investment may change as a result of currency fluctuations if your investment is made in a currency other than that used in the past performance calculation.

Definitions

NAV Net Asset Value of a fund's assets less its liabilities per Share. **Overall Morningstar Rating™** assessment of a fund's past performance, based on both return and risk and shows how similar investments compare with their competitors. Investment decisions should not be based on a high rating alone.

Correlation measures the strength and direction of the relationship between movements in fund and benchmark returns. A correlation of 1.00 indicates that fund and benchmark returns move in lockstep in the same direction.

Alpha (%) a measure of excess return generated by a manager compared to the benchmark. An alpha of 1.00 indicates that a fund has outperformed its benchmark by 1%.

Beta measures a fund's sensitivity to market movements (as represented by the fund's benchmark). A beta of 1.10 suggests the fund could perform 10% better than the benchmark in up markets and 10% worse in down markets, assuming all other factors remain constant. Usually the higher betas represent riskier investments.

Indices do not include fees or operating expenses and you cannot invest in them.

The benchmark is for comparative purposes only unless specifically referenced in the Sub-Funds' Investment Objective and Policy.

Holdings information

The yield displayed is in the base currency of the Sub-Fund. Actual share class yields may differ from the displayed yield due to currency effects.

VaR is a means of measuring the potential loss to a Sub-Fund due to market risk and is expressed as the maximum potential loss at a 99% confidence level. The holding period for the purpose of calculating global exposure is one month.

Information Sources

Fund information, including performance calculations and other data, is provided by J.P. Morgan Asset Management (the marketing name for the asset management businesses of JPMorgan Chase & Co. and its affiliates worldwide).

All data is as at the document date unless indicated otherwise.

© 2025 Morningstar. All Rights Reserved. The information contained herein: (1) is proprietary to Morningstar; (2) may not be copied or distributed; and (3) is not warranted to be accurate, complete or timely. Neither Morningstar nor its content providers are responsible for any damages or losses arising from any use of this information.

Benchmark Source: Information has been obtained from sources believed to be reliable but J.P. Morgan does not warrant its completeness or accuracy. The Index is used with permission. The Index may not be copied, used, or distributed without J.P. Morgan's prior written approval. Copyright 2023, J.P. Morgan Chase & Co. All rights reserved. The customised benchmark was created by J.P. Morgan Asset Management.

Benchmark Source: MSCI. Neither MSCI nor any other party involved in or related to compiling, computing or creating the MSCI data makes any express or implied warranties or representations with respect to such data (or the results to be obtained by the use thereof), and all such parties hereby expressly disclaim all warranties of originality, accuracy, completeness, merchantability or fitness for a particular purpose with respect to any of such data. Without limiting any of the foregoing, in no event shall MSCI, any of its affiliates or any third party involved, in or related to compiling, computing, or creating the data have any liability for any direct, indirect, special, punitive, consequential or any other damages (including lost profits) even if notified of the possibility of such damages. No further distribution or dissemination of the MSCI data is permitted without MSCI's express written consent.

Regional Contact

JPMorgan Asset Management (UK) Limited Registered address: 25 Bank Street, Canary Wharf, London E14 5JP, United Kingdom. Authorised and regulated by the Financial Conduct Authority. Registered in England No. 01161446.

Issuer

JPMorgan Asset Management (Europe) S.à r.l., 6, route de Trèves, L-2633 Senningerberg, Luxembourg. B27900, corporate capital EUR 10.000.000.

Annualised volatility (%) measures the extent to which returns vary up and down over a given period.

Sharpe ratio performance of an investment adjusting for the amount of risk taken (compared a risk-free investment). The higher the Sharpe ratio the better the returns compared to the risk taken.

Tracking error (%) measures how much a fund's returns deviate from those of the benchmark. The lower the number the closer the

fund's historic performance has followed its benchmark.

Information ratio measures if a manager is outperforming or underperforming the benchmark and accounts for the risk taken to achieve the returns. A manager who outperforms a benchmark by 2% p.a. will have a higher IR than a manager with the same outperformance but who takes more risk.

ปัจจัยความเสี่ยงของกองทุนรวม

1. ความเสี่ยงทางการตลาด (Market Risk)

คือความเสี่ยงจากความผันผวนของราคาหลักทรัพย์ที่กองทุนเข้าไปลงทุน ที่เกิดจากการเปลี่ยนแปลงในสถานการณ์ทางเศรษฐกิจ สังคม และการเมือง ซึ่งเป็นความเสี่ยงที่ไม่สามารถควบคุมได้

แนวทางการบริหารเพื่อลดความเสี่ยง :

บริษัทจัดการจะวิเคราะห์ปัจจัยต่างๆรวมทั้งติดตามสถานการณ์การเปลี่ยนแปลงที่อาจมีผลกระทบต่อราคาและยังสามารถปรับสัดส่วนการลงทุนในกองทุนหลักได้ตามความเหมาะสม ซึ่งจะเป็นการช่วยลดผลกระทบต่อราคามูลค่าทรัพย์สินสุทธิของกองทุน

2. ความเสี่ยงจากอัตราแลกเปลี่ยน (Foreign Exchange Risk)

ความเสี่ยงที่การลงทุนอาจประสบกับความผันผวนของอัตราแลกเปลี่ยน ทำให้อัตราผลตอบแทนในรูปเงินบาทผันผวนหากค่าเงินตราสกุลต่างประเทศมีการเปลี่ยนแปลง

แนวทางการบริหารเพื่อลดความเสี่ยง:

กองทุนอาจใช้เครื่องมือป้องกันความเสี่ยงดังกล่าวโดยขึ้นอยู่กับดุลยพินิจของบริษัทจัดการ ซึ่งอาจมีต้นทุนสำหรับการทำธุรกรรมป้องกันความเสี่ยง โดยอาจทำให้ผลตอบแทนของกองทุนโดยรวมลดลงจากต้นทุนที่เพิ่มขึ้น

3. ความเสี่ยงจากการลงทุนในสัญญาซื้อขายล่วงหน้า (Derivatives Risk)

สัญญาซื้อขายล่วงหน้าบางประเภทอาจมีการขึ้นลงผันผวน (volatile) มากกว่าหลักทรัพย์พื้นฐาน ดังนั้นหากกองทุนมีการลงทุนในหลักทรัพย์ดังกล่าวย่อมทำให้สินทรัพย์มีความผันผวนมากกว่าการลงทุนในหลักทรัพย์พื้นฐาน (Underlying Security)

แนวทางการบริหารเพื่อลดความเสี่ยง :

กองทุนอาจจะลงทุนในสัญญาซื้อขายล่วงหน้าที่มีตัวแปรเป็นอัตราแลกเปลี่ยน โดยมีวัตถุประสงค์เพื่อลดความเสี่ยงเท่านั้น ทั้งนี้การป้องกันความเสี่ยงดังกล่าวอาจทำให้กองทุนเสียโอกาสที่จะได้รับผลตอบแทนที่เพิ่มขึ้นหากอัตราแลกเปลี่ยนมีการเปลี่ยนแปลงไปในทางตรงข้ามกับที่กองทุนคาดการณ์ไว้อย่างไรก็ดีกองทุนยังคงมีความเสี่ยงจากการที่คู่สัญญาไม่ปฏิบัติตาม ดังนั้น เพื่อลดความเสี่ยงดังกล่าวกองทุนจะทำธุรกรรมกับธนาคารที่มีกฎหมายเฉพาะจัดตั้งขึ้นหรือธนาคารพาณิชย์

4. ความเสี่ยงของประเทศที่ลงทุน (Country Risk)

คือ ความเสี่ยงที่เกิดจากการเปลี่ยนแปลงภายในประเทศที่กองทุนเข้าไปลงทุน เช่น การเปลี่ยนแปลงผู้บริหาร, การเปลี่ยนแปลงนโยบายทางด้านเศรษฐกิจ หรือสาเหตุอื่นๆ จนทำให้ไม่สามารถชำระค่าขายคืนหน่วยลงทุนได้ตามระยะเวลาที่กำหนด

แนวทางการบริหารเพื่อลดความเสี่ยง:

บริษัทจัดการจะวิเคราะห์ปัจจัยต่างๆรวมทั้งติดตามสถานการณ์การเปลี่ยนแปลงที่อาจมีผลกระทบต่อราคาและยังสามารถปรับสัดส่วนการลงทุนในกองทุนหลักได้ตามความเหมาะสม ซึ่งจะเป็นการช่วยลดผลกระทบต่อราคามูลค่าทรัพย์สินสุทธิของกองทุน

5. **ความเสี่ยงจากข้อจำกัดการนำเงินลงทุนกลับประเทศ (Repatriation Risk)** เป็นความเสี่ยงที่เกิดจากการเปลี่ยนแปลงภายในประเทศที่กองทุนลงทุน เช่น การเปลี่ยนแปลงทางการเมือง ข้อกำหนด กฎเกณฑ์ หรือนโยบายต่างๆ ของรัฐบาลในการบริหารประเทศ ซึ่งรวมถึงสาเหตุอื่นๆ ที่อาจทำให้ไม่สามารถชำระหนี้ได้ตรงตามระยะเวลาที่กำหนด รวมถึงอาจทำให้กองทุนเกิดความเสี่ยงจากสัญญาสวอป และ/หรือสัญญาฟอเวิร์ดได้ ซึ่งมีผลต่อผลตอบแทนที่กองทุนจะได้รับจากการลงทุน

แนวทางการบริหารเพื่อลดความเสี่ยง :

บริษัทจัดการจะติดตามสถานการณ์การเปลี่ยนแปลงการเมือง ภาวะเศรษฐกิจ ภาวะตลาดเงิน ตลาดทุน ตลอดจนปัจจัยพื้นฐานต่างๆ ของประเทศที่กองทุนลงทุนอย่างใกล้ชิด เพื่อประเมินความเสี่ยงจากการลงทุนในประเทศนั้นๆ เพื่อลดความเสี่ยงในส่วนนี้

6. **ความเสี่ยงจากการดำเนินธุรกิจของผู้ออกตราสาร (Business Risk)**

ความสามารถในการดำเนินธุรกิจของผู้ออกตราสารดังกล่าว จะบ่งบอกถึงถึงศักยภาพ ความสามารถในการทำกำไรฐานะการเงิน และความเข้มแข็งขององค์กรธุรกิจ ซึ่งจะถูกสะท้อนออกมาในราคาของหุ้นที่มีการขึ้นหรือลงในขณะนั้นๆ

แนวทางการบริหารความเสี่ยง :

กองทุนจะกระจายการลงทุนไปในบริษัทต่างๆ ทั้งที่อยู่ในกลุ่มธุรกิจเดียวกัน และกลุ่มธุรกิจอื่นๆ และผู้จัดการกองทุน จะทำการติดตามและศึกษาความเป็นไปของธุรกิจและอุตสาหกรรมต่างๆ อย่างใกล้ชิด ซึ่งจะช่วยให้กองทุนสามารถบริหารความเสี่ยงได้ดียิ่งขึ้น โดยหากมีการเปลี่ยนแปลงผลการดำเนินงานหรือฐานะทางการเงินของบริษัทผู้ออกตราสารอย่างมีนัยสำคัญจะได้ พิจารณาปรับเปลี่ยนแผนการลงทุนในหลักทรัพย์อย่างเหมาะสม

AIMC Category Performance Report

Report as of 31/08/2025



Return statistics for Thailand Mutual Funds

AIMC Category	Average Trailing Return (%)							Average Calendar Year Return (%)				
	YTD	3M	6M	1Y	3Y	5Y	10Y	2020	2021	2022	2023	2024
Aggressive Allocation	-5.49	5.21	1.19	-4.45	-4.78	0.06	0.23	-3.71	17.78	-4.53	-7.42	0.46
ASEAN Equity	2.85	6.14	10.62	-1.61	0.76	7.17	0.40	-0.64	24.80	-13.86	1.56	4.16
Asia Pacific Ex Japan	12.75	8.90	11.85	7.89	2.35	0.86	2.81	22.91	1.18	-22.07	-0.41	2.73
China Equity - A Shares	16.46	19.67	17.13	31.71	-3.62	-5.83	1.20	25.04	-5.44	-29.54	-20.95	5.66
Commodities Energy	-7.26	8.10	-6.99	-7.69	-7.67	12.00	-1.19	-31.41	65.84	13.47	-6.87	2.67
Commodities Precious Metals	25.31	2.39	15.22	28.23	19.08	8.56	8.36	22.38	-1.94	-0.75	9.13	20.70
Conservative Allocation	2.11	2.19	2.60	2.64	0.72	0.67	1.17	-1.01	3.30	-3.64	-0.77	2.05
Emerging Market	13.34	7.30	12.65	10.77	4.62	0.43	2.35	9.34	-3.39	-24.38	4.34	0.73
Emerging Market Bond Discretionary F/X Hedge or Unhedge	4.36	3.48	2.27	4.29	3.88	-1.68	1.09	3.86	-4.60	-16.35	0.95	6.59
Energy	-5.19	8.03	6.23	-8.83	-10.39	-1.18	3.25	-6.55	10.38	4.80	-17.51	-10.22
Equity General	-10.27	5.91	0.11	-9.06	-7.96	-0.39	0.01	-9.61	19.03	1.13	-11.89	-1.94
Equity Large Cap	-8.64	7.05	2.82	-6.20	-5.66	1.14	0.91	-11.22	16.03	1.98	-9.68	1.34
Equity Small - Mid Cap	-20.94	4.26	-6.90	-20.25	-15.00	-3.06	-0.64	8.03	41.13	-4.54	-13.32	-10.71
European Equity	7.83	-1.39	-0.30	3.24	9.59	7.47	5.77	4.62	24.32	-19.18	12.78	6.42
Foreign Investment Allocation	4.83	4.15	3.28	4.16	3.60	1.49	2.91	6.41	6.90	-17.03	5.10	4.18
Fund of Property Fund - Foreign	5.18	3.38	2.72	-2.56	-3.02	-0.70	1.08	-6.59	19.71	-25.78	0.76	-6.07
Fund of Property Fund - Thai	-3.39	-2.63	-1.59	-1.74	-2.99	-4.23	0.84	-22.42	-0.22	-6.52	-8.90	5.35
Fund of Property fund -Thai and Foreign	3.58	3.25	4.77	-0.74	-2.36	-2.35	2.62	-10.25	2.89	-11.27	-1.75	-2.84
Global Bond Discretionary F/X Hedge or Unhedge	2.03	1.62	0.10	1.12	1.27	-0.27	-0.68	3.62	1.13	-10.76	2.91	0.54
Global Bond Fully F/X Hedge	3.65	1.88	1.56	1.95	1.41	-1.04	0.26	4.32	0.11	-11.41	2.96	0.53
Global Equity	6.45	5.77	5.27	8.47	8.01	4.04	5.39	19.50	12.50	-26.93	12.61	4.82
Global Equity - Alternative Energy	18.53	18.22	24.50	12.15	-7.01	-	-	-	3.05	-24.42	-7.94	-16.30
Global Equity - Consumer Goods and Services	2.80	5.03	-0.47	10.93	5.02	-0.48	3.13	40.42	-3.47	-32.19	9.05	10.24
Global Equity - Infrastructure	11.46	0.39	7.07	7.65	2.51	5.64	-	-7.34	18.09	-8.55	0.86	1.70
Global Equity Fully FX Risk Hedge	10.58	6.31	8.41	11.32	10.53	6.35	6.65	12.76	15.15	-26.77	16.62	10.38
Greater China Equity	20.24	13.91	9.49	35.60	-0.54	-6.07	1.00	19.36	-12.55	-27.20	-20.20	6.94
Health Care	-1.88	5.08	-6.80	-14.55	-4.35	-0.30	1.82	22.59	7.71	-19.54	-0.96	-7.28
High Yield Bond	2.66	1.91	1.31	3.23	3.47	1.93	2.48	3.44	4.76	-11.58	5.39	4.99
India Equity	-7.66	-4.29	6.64	-12.85	2.85	9.15	5.95	12.07	26.23	-12.85	16.93	10.37
Japan Equity	10.27	9.45	14.29	11.90	13.09	11.02	7.06	10.09	6.73	-10.31	20.35	15.09
Long Term General Bond	8.71	4.71	7.56	9.74	3.82	2.49	2.48	2.26	-0.26	-1.11	1.01	5.36
Mid Term General Bond	3.43	1.59	2.80	4.59	2.81	1.94	1.79	1.03	0.67	0.14	1.61	2.85
Mid Term Government Bond	4.33	2.34	3.77	5.57	2.74	1.62	1.47	1.40	-0.18	-0.06	0.81	2.87
Moderate Allocation	0.84	3.43	2.43	1.76	0.22	0.98	0.91	-3.46	7.56	-5.37	-1.48	2.39
Money Market General	1.12	0.35	0.81	1.76	1.61	1.06	1.03	0.55	0.20	0.38	1.43	2.06
Money Market Government	1.02	0.32	0.74	1.69	1.53	1.00	0.98	0.42	0.18	0.35	1.38	1.98
Other Global Sector Equity	16.48	13.25	12.82	13.78	3.58	10.03	6.21	9.13	16.37	-22.72	3.42	-0.38
SET 50 Index Fund	-8.07	8.63	7.96	-2.59	-4.20	1.59	1.28	-13.21	10.81	4.94	-11.29	6.24
Short Term General Bond	1.47	0.52	1.10	2.26	1.84	1.27	1.19	0.49	0.42	0.55	1.53	2.11
Short Term Government Bond	1.17	0.42	0.89	1.84	1.53	0.98	0.93	0.50	-0.05	0.39	1.18	1.98
Technology Equity	13.69	14.51	16.53	26.32	17.33	3.29	-	50.15	8.42	-43.73	47.90	18.49

Thai Free Hold	1.98	0.74	2.13	1.73	3.07	1.48	2.64	-2.43	-0.63	3.30	2.56	0.97
Thai Mixed (between free and lease hold)	0.84	0.55	0.69	0.81	-1.07	-1.03	1.79	3.19	-1.48	-4.43	-1.13	-3.10
US Equity	5.89	8.11	6.09	13.28	13.13	7.10	9.59	20.70	22.20	-30.01	25.04	18.66
Vietnam Equity	14.51	24.22	15.92	12.21	0.67	9.43	-	15.86	45.20	-32.85	7.81	8.60