

United CIO Growth Fund TH (UGFT-M)

UGFT

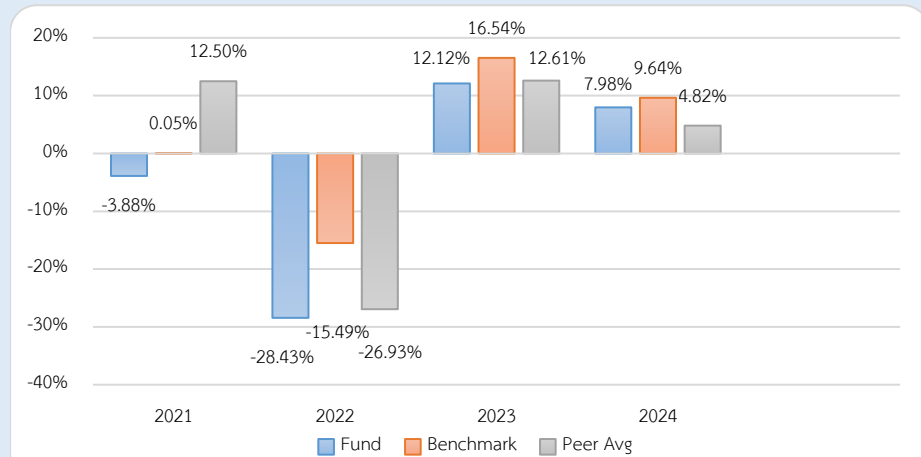
Fund Type / AIMC Category

- Equity Fund
- Feeder Fund / Fund with Foreign Investment related Risks
- Global Equity

Investment Policy and Strategy

- The Fund will mainly invest in United CIO Growth Fund – Class T USD Acc (Master Fund)
- The master fund is managed by UOB Asset Management Ltd (Singapore)
- The Fund may consider investing in derivatives for purposes of enhancing the efficiency of portfolio management.
- The fund aims to achieve performance close to the Master Fund while the Master Fund aims to outperform the benchmark. (active management)

Calendar Year Performance (% p.a.)

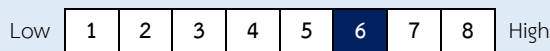


Fund Performance (%)

	YTD	3 Months	6 Months	1 Year*
Fund Return	6.40	7.26	6.40	7.51
Benchmark Return	7.38	8.04	7.38	9.13
Peer Average	4.57	9.47	4.57	6.21
Fund Standard Deviation	9.51	7.55	9.51	12.07
Benchmark Standard Deviation	9.65	7.64	9.65	12.32
	3 Years*	5 Years *	10 Years *	Since Inception *
Fund Return	7.02	-	-	-3.27
Benchmark Return	11.80	-	-	4.17
Peer Average	8.77	-	-	-
Fund Standard Deviation	12.07	-	-	13.77
Benchmark Standard Deviation	12.54	-	-	13.16

Remark : * % p.a.

Risk Level



High Risk

Mainly invest in equity instruments at least 80% of NAV, in average, in any accounting year.

Fund Information

Registered Date	12 November 2021
Share Class Launch Date	12 November 2021
Dividend Policy	No dividend
Fund Duration	Indefinite

Fund Manager

Since	
Mr. Waroon Saptaweekul	18 September 2023
Ms. Pornsajee Worasuttiapisit	18 September 2023

Benchmark

- The Master's fund performance adjusted by the cost of hedging the exchange rate compare with Thai baht currency as at the date with return is calculated. (90.00%)
- The Master's fund performance adjusted by the exchange rate compare with Thai baht currency as at the date with return is calculated. (10.00%)

Remark:

- The Management Company uses such index as a benchmark for fund performance comparison.

Warning:

- Investment in Mutual Fund is not bank deposit.
- Past performance is not indicative of future results.

Certified by Thai Private Sector Collective Action

Against Corruption: Declared CAC

Full Prospectus



Investors should study
Liquidity Risk Management
Tools in the prospectus.

www.uobam.co.th

Subscription

Subscription date : Every business day
 Business hours : 08:30 a.m. - 03:30 p.m.
 Min. initial subscription : Indefinite
 Min. subsequent subscription : Indefinite

Remark:

Settlement Period: Business holidays abroad are not included.

Redemption

Redemption date : Every business day
 Business hours : 08:30 a.m. - 02:00 p.m.
 Min. redemption : Indefinite
 Min. account balance : Indefinite
 Settlement period : T+5 working day
 from redemption order date

Statistical Data

Maximum Drawdown -35.80 %
 Recovering Period -
 FX Hedging 91.89 %
 Sharpe Ratio 0.63
 Alpha -4.78
 Beta 0.80
 Portfolio Turnover Ratio 0.39

Fees charged to the Fund (% p.a. of NAV / Include VAT)

Fees	Max.	Actual
Management Fee	2.1400	1.0700
Total expenses	5.3500	1.3178

Remark:

The Management Company may consider changing the actual fees charged to reflect strategy or administrative costs.

Fees charged to unitholders (% of the unit price / Include VAT)

Fees	Max.	Actual
Front-end Fee	2.00	1.50
Back-end Fee	2.00	waived
Switching-in Fee	2.00	1.50
Switching-out Fee	2.00	waived
Transfer fee	10 Baht per 500 units or fraction of 500 units	waived

Remark:

1. In case of switching in, the Management Company will not charge front-end fee.
2. The Management Company may consider changing the actual fees charged to reflect strategy or administrative costs.
3. The Management Company can charge fees differently to each group or each unitholder.
4. Increase Front-end Fee and Switching-in Fee from 1.00% to 1.50% Effective Date from 1 February 2024 onwards

Asset Allocation

breakdown	% NAV
1. Unit Trust	98.13
2. Other Asset and Liability	1.87

Top 5 Holdings

holding	% NAV
1. United CIO Growth Fund (Class T USD Acc)	98.13

Investment in the other funds more than 20% of NAV

Fund name : United CIO Growth Fund (Class T USD Acc) ISIN code : SGXZ33899576

Bloomberg code : UNEGSTU SP

Definition

Maximum Drawdown : The percentage of the fund's maximum loss in the past 5 years (or since the fund's inception if it is launched for less than 5 years) which is measured from the highest NAV per unit to the lowest NAV per unit during such period. Maximum Drawdown is an indicator of the risk of loss from investing in the fund.

Recovering Period : The length of time that the fund takes in recovering from the point of maximum loss to earning back the initial investment.

FX Hedging : The percentage of foreign currency investment with FX hedging.

Portfolio Turnover Ratio : The frequency of securities trading in the fund portfolio over a certain period, calculated by taking the lower value between the sum of the value of securities purchased and the sum of the value of securities sold of the fund in 1 year period divided by the average NAV in the same period. A fund with high Portfolio Turnover Ratio indicates frequent securities trading by fund manager resulting in high trading costs. Therefore, it is necessary to compare with the performance of the fund in order to assess the worthiness of such securities trading.

Sharpe Ratio : A ratio between the excess return of a fund and the risk of investment. The Sharpe ratio reveals the average investment return, minus the risk-free rate of return, divided by the standard deviation of returns for the fund. The Sharpe ratio reflects the extra return that should be received by the fund to compensate the amount of risk taken in investment. The fund with a higher Sharpe ratio is considered superior to other funds in terms of management efficiency since it provides higher excess return under the same risk level.

Alpha : The excess return of a fund relative to the return of a benchmark index. A fund with high alpha indicates that it is able to beat the performance of its corresponding benchmark which is a result of the capabilities of the fund manager in selecting appropriate securities for investment or making investment in a timely manner.

Beta : A measure of the degree and direction of volatility of the rate of return of assets in the investment portfolio of the fund compared to the changes in the overall market. A beta of less than 1.0 implies that the rate of return of the fund's assets is less volatile than that of the securities in the broader market whereas a beta of greater than 1.0 implies that the rate of return of the fund's assets is more volatile than that of the broader market.

Tracking Error : The efficiency of the fund to imitate its return to benchmark. Low Tracking Error means the fund is effective in generating return close to benchmark. High Tracking Error means the fund generates return more deviate from benchmark.

Yield to Maturity : The rate of return earned on a bond held to maturity, calculated from the interest expected to receive in the future over that bond duration and paid back principal discounted to the present value. It is used to measure return of fixed income funds by calculating the weighted average of Yield to Maturity of each bond that the fund invests. As Yield to Maturity has standard unit in percentage per annum, it can be used to compare the returns between fixed income funds that have an investment policy of holding bonds until maturity and similar investment characteristics.

"Important Notice: This Document has been translated from Thai. If there is any inconsistency or ambiguity between the English version and the Thai version, the Thai version shall prevail."

UOB Asset Management (Thailand) Co., Ltd.
23A, 25th Floor, Asia Centre Building, 173/27-30, 31-33
South Sathon Road, Thungmahamek, Sathon,
Bangkok 10120, Thailand
Tel : +66 2786 2000
www.uobam.co.th

กองทุนเปิด ยูไนเต็ด ซีไอโอ โกรท ฟันด์ TH
ณ วันที่ 30 มิถุนายน 2568
รายละเอียดการลงทุน การกู้ยืมเงินและการก่อภาระผูกพัน

- รายละเอียดการลงทุน

	มูลค่าตามราคาตลาด	%NAV
หลักทรัพย์หรือทรัพย์สินในประเทศ		
เงินฝาก	121,834,276.75	5.04
อื่นๆ	-108,555,811.42	-4.49
หลักทรัพย์หรือทรัพย์สินประเทศ SINGAPORE		
หุ้นสามัญ	2,372,519,671.56	98.13
ไม่จดทะเบียนในตลาดหลักทรัพย์ฯ	2,372,519,671.56	98.13
หน่วยลงทุน	2,372,519,671.56	98.13
หลักทรัพย์หรือทรัพย์สินสัญญาซื้อขายล่วงหน้า		
สัญญาที่อ้างอิงกับอัตราแลกเปลี่ยน	31,845,476.47	1.32
สัญญาฟอเวิร์ด	31,845,476.47	1.32
มูลค่าทรัพย์สินสุทธิ	2,417,643,613.36	100.00

- รายละเอียดการกู้ยืมเงินและการขายโดยมีสัญญาซื้อคืน

- ไม่มี -

United CIO Growth Fund

June 2025

UOB Asset Management

Fund Information

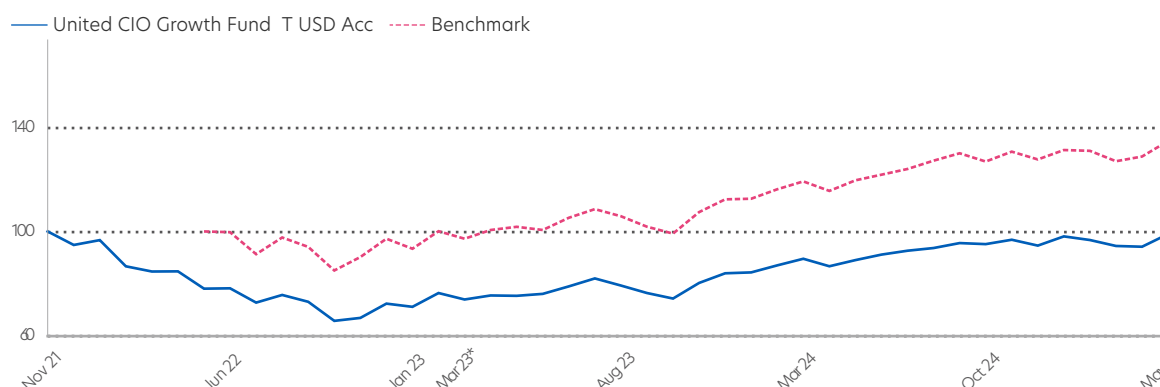
Fund Size: USD 281.83 mil

Base Currency: SGD

Investment Objective

The Fund seeks to provide investors with capital growth by investing globally.

Fund Performance Since Inception in US Dollar



Fund performance is calculated on a NAV to NAV basis.

Benchmark: Since Inception - 3 May 22 : No benchmark; 4 May 22 - 5 Mar 23 : MSCI AC World Index (Being the reference benchmark for the Fund); 6 Mar 23 - Present : A composite of 80% MSCI AC World Index, 15% Bloomberg Barclays Global Aggregate Index and 5% SORA 1M Compounded (Being the reference benchmark for the Fund)

*UOB Private Bank CIO appointed as Investment Advisor for the Fund - 6 March 2023

Performance by Share Class

	Cumulative Performance (%)					Annualised Performance (%)			
	1M	3M	6M	YTD	1Y	3Y	5Y	10Y	Since Incept
T USD Acc									15 Nov 2021
Fund NAV to NAV	5.15	2.37	2.25	4.67	11.19	8.15	--	--	-0.28
Fund (Charges applied^)	5.15	2.37	2.25	4.67	11.19	8.15	--	--	-0.28
Benchmark	4.61	2.87	3.11	5.52	12.56	10.50	--	--	10.12*
A USD Acc									27 Jun 2023
Fund NAV to NAV	5.04	2.09	1.70	4.20	10.06	--	--	--	11.90
Fund (Charges applied^)	-0.21	-3.02	-3.39	-1.01	4.56	--	--	--	8.96
Benchmark	4.61	2.87	3.11	5.52	12.56	--	--	--	14.20
Z USD Acc									06 Sep 2023
Fund NAV to NAV	5.15	2.37	2.25	4.67	11.20	--	--	--	13.89
Fund (Charges applied^)	5.15	2.37	2.25	4.67	11.20	--	--	--	13.89
Benchmark	4.61	2.87	3.11	5.52	12.56	--	--	--	15.53

Source: Morningstar. Performance as at 31 May 2025, USD basis, with dividends and distributions reinvested, if any. Performance figures for 1 month till 1 year show the % change, while performance figures above 1 year show the average annual compounded returns. Since inception performance under 1 year is not annualised.

*Since Inception benchmark return is from the date the benchmark was incorporated on 4 May 2022.

[^]Includes the effect of the current subscription fee that is charged, which an investor might or might not pay.

Contact Details

UOB Asset Management Ltd
80 Raffles Place #03-00
UOB Plaza 2
Singapore 048624

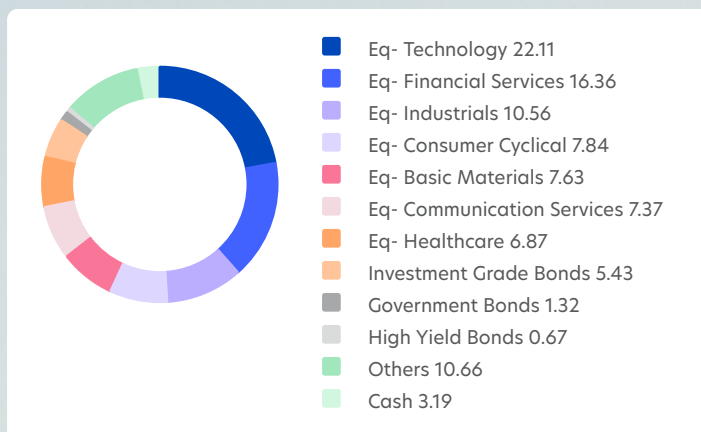
Hotline
1800 22 22 228
(8am to 8pm daily, Singapore time)

Email
uobam@UOBGroup.com

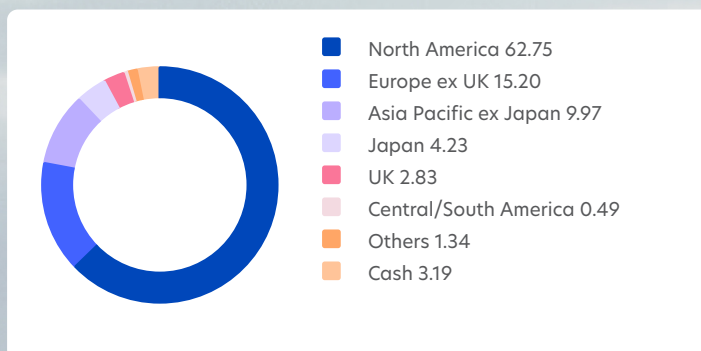
Website
uobam.com.sg

Portfolio Characteristics

Sector Allocation(%)



Country Allocation(%)



Asset Allocation(%)

Equities	86.60
Bonds	7.41
Others	2.79
Cash	3.19

Top 10 Portfolio Holdings(%)

iShares NASDAQ 100 UCITS ETF	8.50
iShares MSCI ACWI UCITS ETF	8.50
iShares Core Euro STOXX 50 UCITS ETF	6.94
iShares S&P 500 Financials Sector UCITS ETF	6.72
VanEck Gold Miners UCITS ETF	6.03
Vanguard Mega Cap Growth ETF	5.36
iShares MSCI EM Asia UCITS ETF	5.25
Invesco S&P 500® Top 50 ETF	4.18
iShares Core MSCI Europe UCITS ETF	4.11
iShares MSCI Japan UCITS ETF	3.83

Share Class	NAV Price*	Bloomberg Ticker	ISIN Code	Inception Date	Subscription Mode
T USD Acc	USD 99.2423	UNEGSTU SP	SGXZ33899576	Nov 21	Cash
A USD Acc	USD 1.2470	UNGRFAU SP	SGXZ43813831	Jun 23	Cash
Z USD Acc	USD 1.2454	UNGFZUA SP	SGXZ83501353	Sep 23	Cash

Share Class	Max. Subscription Fee(%)	Annual Management Fee(%)
T USD Acc	--	--
A USD Acc	5.0	1.00
Z USD Acc	--	--

*Effective 21 Aug 2024, NAV Price will be truncated to 4 decimal places.

All data as of 31 May 2025, unless otherwise specified.

Top 10 Underlying Funds

Underlying Fund Name	Investment Objective
iShares NASDAQ 100 UCITS ETF	The investment objective of the ETF seeks to track the performance of an index composed of 100 of the largest non-financial companies listed on the NASDAQ Stock Market.
Vanguard Mega Cap Growth ETF	The investment objective of the ETF seeks to track the performance of a benchmark index that measures the investment return of large-capitalisation growth stocks in the United States.
iShares MSCI Japan UCITS ETF	The investment objective of the ETF is to deliver the net total return performance of the Benchmark Index (being the MSCI Japan Index), less the fees and expenses of the Fund.
iShares MSCI ACWI UCITS ETF	The investment objective of the ETF is to provide investors with a total return, taking into account both capital and income returns, which reflects the return of the MSCI All Countries World Index Net USD
iShares Core EURO STOXX 50 UCITS ETF	The investment objective of the ETF is to deliver the net total return performance of the Benchmark Index (being the EURO STOXX 50 Index), less the fees and expenses of the Fund.
iShares MSCI EM Asia UCITS ETF	The investment objective of the ETF seeks to deliver the performance of the Benchmark Index (being the MSCI EM Asia Index Net USD), less the fees and expenses of the fund.
iShares S&P 500 Financials Sector UCITS ETF	The investment objective of the ETF is to provide investors with a total return, taking into account both capital and income returns, which reflects the return of the S&P 500 Capped 35/20 Financials Index.
iShares Core MSCI Europe UCITS ETF	The investment objective of the ETF is to provide investors with a total return, taking into account both capital and income returns, which reflects the return of the MSCI Europe Index.
Invesco S&P 500® Top 50 ETF	The investment objective of the ETF seeks to track the investment results (before fees and expenses) of the S&P 500 ® Top 50 Index (the "Underlying Index").
VanEck Gold Miners UCITS ETF	The investment objective of the ETF seeks to replicate as closely as possible, before fees and expenses, the price and yield performance of the NYSE® Arca Gold Miners Index® (the "Gold Miners Index" or the "Index").

All data as of 31 May 2025, unless otherwise specified.



Important Notice & Disclaimers

Investors should consider carefully whether to subscribe for units in the base currency of the Fund or for units in various classes which are denominated in their respective currencies. The difference in the performances of the Fund in various currencies, if applicable, is a reflection of fluctuating exchange rates during the relevant period.

A prospectus for the fund(s) (the "Fund(s)") may be obtained from the Manager or any of its appointed distributors. Investors should read the prospectus before deciding whether to subscribe for or purchase units in the Fund(s) ("Units"). All applications for Units must be made on application forms accompanying the prospectus or otherwise as described in the prospectus. **Past performance of the Fund(s) or the Manager and any prediction, projection or forecast on the economy or markets are not necessarily indicative of the future or likely performance of the Fund(s) or the Manager.** Any extraordinary performance may be due to exceptional circumstances which may not be sustainable. The value of Units and any income from the Fund(s) may fall as well as rise, and is likely to have high volatility due to the investment policies and/or portfolio management techniques employed by the Fund(s). The above information is strictly for general information only and must not be construed as an offer or solicitation to deal in Units, nor a recommendation to invest in any company mentioned herein. Investments in unit trusts are not obligations of, deposits in, or guaranteed or insured by UOB, UOBAM, or any affiliates or distributors. The Fund may use or invest in financial derivative instruments and you should be aware of the risks associated with investments in financial derivative instruments which are described in the Fund's prospectus. An investment in unit trusts is subject to investment risks and foreign exchange risks, including the possible loss of the principal amount invested. Investors may wish to seek advice from a financial adviser before making a commitment to invest in Units. In the event an investor chooses not to seek advice from a financial adviser, the investor should consider carefully whether the Fund(s) is/are suitable for him.

The blended index return is calculated by UOB Asset Management Ltd using end of day index level values licensed from MSCI ("MSCI Data"), which are provided "as is". MSCI bears no liability for or in connection with MSCI Data. MSCI full disclaimer at [msci.com/notice-and-disclaimer-for-blended-index-returns](https://www.msci.com/notice-and-disclaimer-for-blended-index-returns).

Source: Bloomberg Index Services Limited. BLOOMBERG® is a trademark and service mark of Bloomberg Finance L.P. and its affiliates (collectively "Bloomberg"). BARCLAYS® is a trademark and service mark of Barclays Bank Plc (collectively with its affiliates, "Barclays"), used under license. Bloomberg or Bloomberg's licensors, including Barclays, own all proprietary rights in the Bloomberg Barclays indices. Neither Bloomberg nor Barclays approves or endorses this material, or guarantees the accuracy or completeness of any information herein, or makes any warranty, express or implied, as to the results to be obtained therefrom and, to the maximum extent allowed by the law, neither shall have any liability or responsibility for injury or damages arising in connection therewith.

This advertisement has not been reviewed by the Monetary Authority of Singapore.

UOB Asset Management Ltd Company Reg No. 198600120Z

AIMC Category Performance Report

Report as of 30/06/2025



Return statistics for Thailand Mutual Funds

AIMC Category	Average Trailing Return (%)							Average Calendar Year Return (%)				
	YTD	3M	6M	1Y	3Y	5Y	10Y	2020	2021	2022	2023	2024
Aggressive Allocation	-11.74	-2.29	-11.74	-9.49	-6.02	-1.46	-1.40	-3.71	17.78	-4.53	-7.42	0.46
ASEAN Equity	-4.86	2.31	-4.86	-4.68	0.56	5.87	-0.87	-0.64	24.80	-13.86	1.56	4.16
Asia Pacific Ex Japan	9.60	8.65	9.60	2.20	1.32	3.00	1.37	22.91	1.18	-22.07	-0.41	2.73
China Equity - A Shares	0.04	0.22	0.04	9.20	-11.49	-5.00	-2.85	25.04	-5.44	-29.54	-20.95	5.66
Commodities Energy	-9.22	-9.60	-9.22	-18.27	-10.37	13.58	-2.73	-31.41	65.84	13.47	-6.87	2.67
Commodities Precious Metals	21.98	4.17	21.98	30.24	16.04	10.31	7.93	22.38	-1.94	-0.75	9.13	20.70
Conservative Allocation	0.13	0.74	0.13	1.77	0.44	0.34	0.87	-1.01	3.30	-3.64	-0.77	2.05
Emerging Market	10.38	8.76	10.38	4.55	3.55	1.63	0.75	9.34	-3.39	-24.38	4.34	0.73
Emerging Market Bond Discretionary F/X Hedge or Unhedge	2.04	0.33	2.04	3.19	2.89	-1.38	0.28	3.86	-4.60	-16.35	0.95	6.59
Energy	-15.41	-8.28	-15.41	-15.69	-11.47	-4.59	0.18	-6.55	10.38	4.80	-17.51	-10.22
Equity General	-19.20	-6.07	-19.20	-15.83	-9.89	-2.56	-1.66	-9.61	19.03	1.13	-11.89	-1.94
Equity Large Cap	-18.77	-5.17	-18.77	-12.21	-7.83	-1.42	-1.05	-11.22	16.03	1.98	-9.68	1.34
Equity Small - Mid Cap	-28.53	-9.71	-28.53	-31.35	-16.97	-3.57	-2.35	8.03	41.13	-4.54	-13.32	-10.71
European Equity	9.10	5.78	9.10	6.26	10.84	8.94	5.50	4.62	24.32	-19.18	12.78	6.42
Foreign Investment Allocation	3.08	4.02	3.08	3.10	3.47	2.35	2.11	6.41	6.90	-17.03	5.10	4.18
Fund of Property Fund - Foreign	2.56	2.05	2.56	2.04	-3.20	-0.15	0.77	-6.59	19.71	-25.78	0.76	-6.07
Fund of Property Fund - Thai	-6.88	-5.30	-6.88	9.67	-3.50	-5.69	0.56	-22.42	-0.22	-6.52	-8.90	5.35
Fund of Property fund -Thai and Foreign	-0.36	-0.83	-0.36	5.95	-3.11	-2.55	2.00	-10.25	2.89	-11.27	-1.75	-2.84
Global Bond Discretionary F/X Hedge or Unhedge	1.36	-0.11	1.36	0.50	1.41	0.06	-1.00	3.62	1.13	-10.76	2.91	0.54
Global Bond Fully F/X Hedge	3.03	1.35	3.03	3.53	1.50	-0.65	0.28	4.32	0.11	-11.41	2.96	0.53
Global Equity	4.57	9.47	4.57	6.21	8.77	6.51	4.62	19.50	12.50	-26.93	12.61	4.82
Global Equity - Alternative Energy	5.39	16.86	5.39	-1.12	-6.24	-	-	-	3.05	-24.42	-7.94	-16.30
Global Equity - Consumer Goods and Services	-0.21	6.17	-0.21	6.67	5.15	1.83	2.65	40.42	-3.47	-32.19	9.05	10.24
Global Equity - Infrastructure	11.82	5.06	11.82	15.76	3.74	5.80	-	-7.34	18.09	-8.55	0.86	1.70
Global Equity Fully FX Risk Hedge	8.18	11.09	8.18	11.46	10.53	8.28	6.15	12.76	15.15	-26.77	16.62	10.38
Greater China Equity	9.21	-0.11	9.21	17.09	-6.97	-5.50	-1.90	19.36	-12.55	-27.20	-20.20	6.94
Health Care	-4.52	-4.29	-4.52	-13.25	-4.32	0.35	1.56	22.59	7.71	-19.54	-0.96	-7.28
High Yield Bond	1.82	1.71	1.82	3.48	4.33	2.60	2.14	3.44	4.76	-11.58	5.39	4.99
India Equity	-1.63	5.90	-1.63	-6.19	8.86	13.23	6.66	12.07	26.23	-12.85	16.93	10.37
Japan Equity	4.18	8.57	4.18	4.30	13.40	10.49	5.67	10.09	6.73	-10.31	20.35	15.09
Long Term General Bond	6.27	3.68	6.27	7.75	3.57	2.22	2.26	2.26	-0.26	-1.11	1.01	5.36
Mid Term General Bond	2.48	1.26	2.48	4.11	2.71	1.76	1.73	1.03	0.67	0.14	1.61	2.85
Mid Term Government Bond	2.92	1.66	2.92	4.78	2.47	1.36	1.37	1.40	-0.18	-0.06	0.81	2.87
Moderate Allocation	-2.35	0.70	-2.35	-0.06	-0.28	0.31	0.18	-3.46	7.56	-5.37	-1.48	2.39
Money Market General	0.88	0.42	0.88	1.90	1.55	1.03	1.02	0.55	0.20	0.38	1.43	2.06
Money Market Government	0.81	0.38	0.81	1.84	1.47	0.96	0.98	0.42	0.18	0.35	1.38	1.98
Other Global Sector Equity	7.76	7.41	7.76	7.48	2.42	12.38	4.45	9.13	16.37	-22.72	3.42	-0.38
SET 50 Index Fund	-19.68	-2.87	-19.68	-8.97	-6.88	-1.96	-0.88	-13.21	10.81	4.94	-11.29	6.24
Short Term General Bond	1.13	0.53	1.13	2.22	1.79	1.23	1.19	0.49	0.42	0.55	1.53	2.11
Short Term Government Bond	0.91	0.43	0.91	1.96	1.47	0.93	0.93	0.50	-0.05	0.39	1.18	1.98
Technology Equity	9.82	24.20	9.82	18.07	17.80	6.08	-	50.15	8.42	-43.73	47.90	18.49

Thai Free Hold	1.05	0.69	1.05	1.00	2.77	0.86	2.63	-2.43	-0.63	3.30	2.56	0.97
Thai Mixed (between free and lease hold)	0.29	0.42	0.29	0.67	-1.19	-0.93	1.74	3.19	-1.48	-4.43	-1.13	-3.10
US Equity	2.56	10.54	2.56	10.38	15.05	9.24	9.11	20.70	22.20	-30.01	25.04	18.66
Vietnam Equity	-5.13	-1.56	-5.13	-8.26	-3.83	6.57	-	15.86	45.20	-32.85	7.81	8.60