

Thai Cash Management Fund (TCMF-M)

TCMF

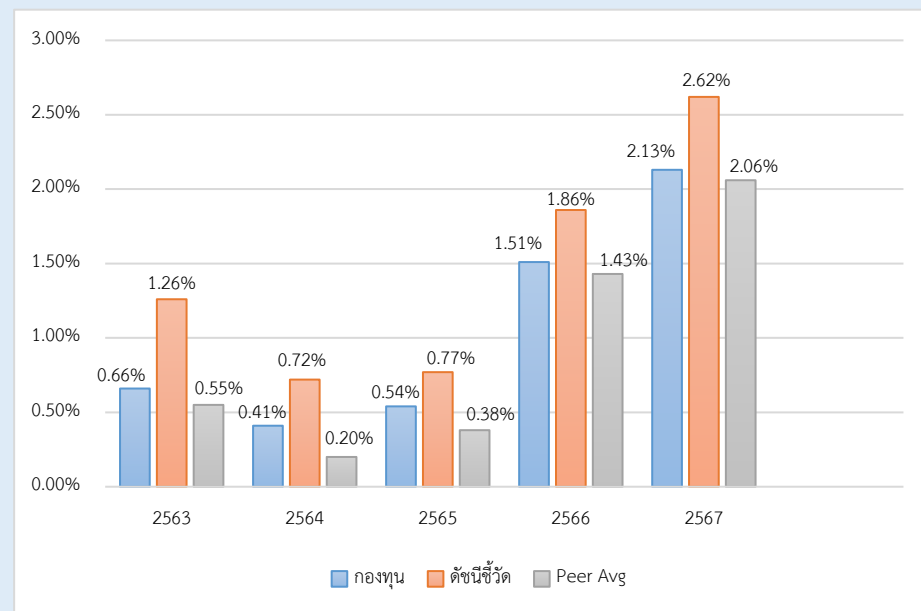
Fund Type / AIMC Category

- Fixed Income Fund
- Money Market Fund / Fund without Foreign Investment related Risks
- Money Market General

Investment Policy and Strategy

- The Fund will mainly invest in government bonds, and/or state enterprise bonds with high stability and liquidity.
- The fund aims to achieve higher performance than its benchmark. (active management)

Calendar Year Performance (% p.a.)



Fund Performance (%)

	YTD	3 Months	6 Months	1 Year*
Fund Return	0.61	0.46	0.94	2.03
Benchmark Return	0.78	0.64	1.23	2.53
Peer Average	0.62	0.47	0.94	1.98
Fund Standard Deviation	0.04	0.04	0.05	0.08
Benchmark Standard Deviation	0.07	0.05	0.08	0.11
	3 Years*	5 Years *	10 Years *	Since Inception *
Fund Return	1.55	1.11	1.16	1.94
Benchmark Return	1.94	1.48	1.47	1.71
Peer Average	1.48	0.99	1.02	-
Fund Standard Deviation	0.18	0.21	0.15	0.31
Benchmark Standard Deviation	0.23	0.24	0.20	0.25

Remark : * % p.a.

Risk Level

Low **1** 2 3 4 5 6 7 8 High

Low Risk

Invest in deposit, deposit equivalent, government bonds or BOT bonds that mature in less than 397 days without foreign risk

Fund Information

Registered Date	8 December 2000
Share Class Launch Date	8 December 2000
Dividend Policy	No dividend
Fund Duration	Indefinite

Fund Manager

Mr.Jaruwat Preepreamkul	8 December 2000
Ms.Chanisa Viranuvatti	1 June 2021

Benchmark 1

- Total Return of ThaiBMA Short-term Government Bond Index (50%)
- ThaiBMA Commercial Paper Index -Total Return with rating A- and above (50%)

Benchmark 2

3 months fixed deposit rate limit 5 million baht averaged by BBL, SCB, KBANK after TAX. (100%)

(Details page 3)

Remark:

The Management Company uses such index as a benchmark for fund performance comparison.

Warning:

- Investment in Mutual Fund is not bank deposit.
- Past performance is not indicative of future results.

Certified by Thai Private Sector Collective Action

Against Corruption: Declared CAC

Investors should study
Liquidity Risk Management
Tools in the prospectus.

Full Prospectus



www.uobam.co.th

Subscription

Subscription date : Every business day
 Business hours : 08:30 a.m. - 03:30 p.m.
 Min. initial subscription : Indefinite
 Min. subsequent subscription : Indefinite

Redemption

Redemption date : Every business day
 Business hours : 08:30 a.m. - 03:00 p.m.
 Min. redemption : Indefinite
 Min. account balance : Indefinite
 Settlement period : T+1 working day
 from redemption order date

Statistical Data

Maximum Drawdown 0.00 %
 Recovering Period -
 Portfolio Turnover Ratio 2.70
 Duration 1 Month 13 Days
 Yield to Maturity 1.90

Fees charged to the Fund (% p.a. of NAV / Include VAT)

Fees	Max.	Actual
Management Fee	0.5136	0.1070
Total expenses	2.1400	0.1265

Remark :
 The Management Company may consider changing the actual fees charged to reflect strategy or administrative costs.

Top 5 Issuers

Issuer	% NAV
1. BANK OF THAILAND	74.86
2. Krungthai Bank Plc.	8.19
3. CPF (Thailand) Public Company Limited.	5.29
4. Bangkok Bank PCL.	3.44
5. LAND AND HOUSE PUBLIC COMPANY LIMITED	2.16

Fees charged to unitholders (% of the unit price / Include VAT)

Fees	Max.	Actual
Front-end Fee	None	None
Back-end Fee	None	None
Switching-in Fee	None	None
Switching-out Fee	None	None
Transfer Fee	50 Baht per 2,000 units or fraction of 2,000 units	50 Baht per 2,000 units or fraction of 2,000 units

Remark :
 1. In the case of transferring units, the maximum amount charged from the transferor must not exceed 25,000 baht.
 2. The Management Company may consider changing the actual fees charged to reflect strategy or administrative costs.

Credit Rating Breakdown (%)

	Thai	national	international
1. Gov bond/AAA	83.24	-	-
2. AA	5.45	-	-
3. A	8.20	-	-

Asset Allocation

breakdown	% NAV
1. Government bonds and government guarantee	74.86
2. Deposits, certificates of deposit, promissory notes Bills of exchange issued directly by private companies or Aval banks.	21.29
3. Deposits, certificates of deposit, promissory notes Bills of exchange issued by financial institutions	1.63
4. Other assets (accrued/accrued items)	1.48
5. Debenture	0.74

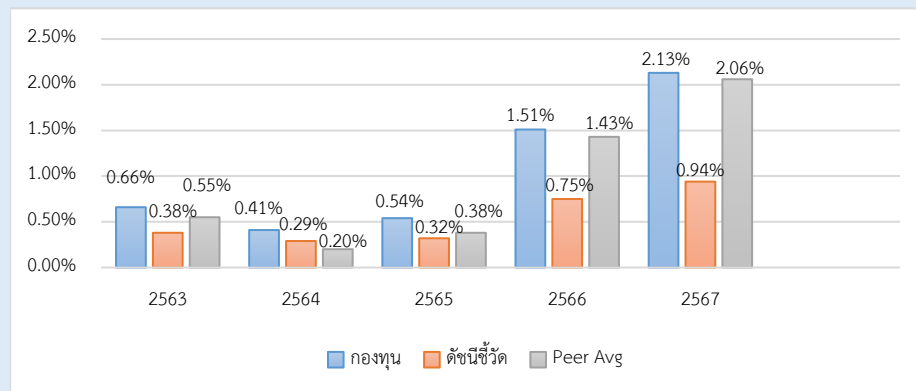
Top 5 Holdings

holding	% NAV
1. Treasury bill: BANK OF THAILAND CB25703B 03/07/2025	10.25
2. Treasury bill: BANK OF THAILAND CB25502A 02/05/2025	8.36
3. Treasury bill: BANK OF THAILAND CB25612A 12/06/2025	7.29
4. Treasury bill: BANK OF THAILAND CB25515A 15/05/2025	7.24
5. Treasury bill: BANK OF THAILAND CB25508B 08/05/2025	6.48

Other information

Benchmark 2: 3 months fixed deposit rate limit 5 million baht averaged by BBL, SCB, KBANK after TAX. (100%)

Calendar Year Performance (% p.a.)



Fund Performance (%)

	YTD	3 Months	6 Months	1 Year*
Fund Return	0.61	0.46	0.94	2.03
Benchmark Return	0.28	0.20	0.42	0.89
Peer Average	0.62	0.47	0.94	1.98
Fund Standard Deviation	0.04	0.04	0.05	0.08
Benchmark Standard Deviation	0.02	0.02	0.02	0.04

	3 Years*	5 Years *	10 Years *	Since Inception *
Fund Return	1.55	1.11	1.16	1.94
Benchmark Return	0.73	0.56	0.74	1.41
Peer Average	1.48	0.99	1.02	-
Fund Standard Deviation	0.18	0.21	0.15	0.31
Benchmark Standard Deviation	0.07	0.08	0.08	0.27

Remark : * % p.a.

Note: The fund has changed its index from the original to

Benchmark 1

- 1) Total Return of ThaiBMA Short-term Government Bond Index (65%)
- 2) ThaiBMA Commercial Paper Index -Total Return with rating AA- and above (15%)
- 3) 3 months fixed deposit rate limit 5 million baht averaged by BBL, SCB, KBANK after TAX. (20%)

Benchmark 2

3 months fixed deposit rate limit 5 million baht averaged by BBL, SCB, KBANK after TAX. (100%)

The Fund changes its indicators to line with the fund's strategy. It is effective from June 1, 2025 onwards.

Definition

Maximum Drawdown : The percentage of the fund's maximum loss in the past 5 years (or since the fund's inception if it is launched for less than 5 years) which is measured from the highest NAV per unit to the lowest NAV per unit during such period. Maximum Drawdown is an indicator of the risk of loss from investing in the fund.

Recovering Period : The length of time that the fund takes in recovering from the point of maximum loss to earning back the initial investment.

FX Hedging : The percentage of foreign currency investment with FX hedging.

Portfolio Turnover Ratio : The frequency of securities trading in the fund portfolio over a certain period, calculated by taking the lower value between the sum of the value of securities purchased and the sum of the value of securities sold of the fund in 1 year period divided by the average NAV in the same period. A fund with high Portfolio Turnover Ratio indicates frequent securities trading by fund manager resulting in high trading costs. Therefore, it is necessary to compare with the performance of the fund in order to assess the worthiness of such securities trading.

Sharpe Ratio : A ratio between the excess return of a fund and the risk of investment. The Sharpe ratio reveals the average investment return, minus the risk-free rate of return, divided by the standard deviation of returns for the fund. The Sharpe ratio reflects the extra return that should be received by the fund to compensate the amount of risk taken in investment. The fund with a higher Sharpe ratio is considered superior to other funds in terms of management efficiency since it provides higher excess return under the same risk level.

Alpha : The excess return of a fund relative to the return of a benchmark index. A fund with high alpha indicates that it is able to beat the performance of its corresponding benchmark which is a result of the capabilities of the fund manager in selecting appropriate securities for investment or making investment in a timely manner.

Beta : A measure of the degree and direction of volatility of the rate of return of assets in the investment portfolio of the fund compared to the changes in the overall market. A beta of less than 1.0 implies that the rate of return of the fund's assets is less volatile than that of the securities in the broader market whereas a beta of greater than 1.0 implies that the rate of return of the fund's assets is more volatile than that of the broader market.

Tracking Error : The efficiency of the fund to imitate its return to benchmark. Low Tracking Error means the fund is effective in generating return close to benchmark. High Tracking Error means the fund generates return more deviate from benchmark.

Yield to Maturity : The rate of return earned on a bond held to maturity, calculated from the interest expected to receive in the future over that bond duration and paid back principal discounted to the present value. It is used to measure return of fixed income funds by calculating the weighted average of Yield to Maturity of each bond that the fund invests. As Yield to Maturity has standard unit in percentage per annum, it can be used to compare the returns between fixed income funds that have an investment policy of holding bonds until maturity and similar investment characteristics.

Important Notice: This Document has been translated from Thai. If there is any inconsistency or ambiguity between the English version and the Thai version, the Thai version shall prevail."

UOB Asset Management (Thailand)
Co., Ltd.

23A, 25th Floor, Asia Centre Building, 173/27-30, 31-33
South Sathon Road, Thungmahamek, Sathon,
Bangkok 10120, Thailand

Tel : +66 2786 2000

www.uobam.co.th

รายละเอียดและอันดับความน่าเชื่อถือของตราสารหนี้ ตราสารกึ่งหนี้กึ่งทุน หรือเงินฝากที่ลงทุนหรือมีไว้

กองทุนเปิด ไทย แคช แมเนจเม้นท์

ณ วันที่ 31 มีนาคม 2568

ผู้ออก/ผู้รับรอง/ผู้ค้ำประกัน	อันดับความน่าเชื่อถือ	มูลค่าตามราคาตลาด	%NAV
(ก) กลุ่มตราสารภาครัฐไทย และตราสารภาครัฐต่างประเทศ		<u>12,352,109,376.93</u>	<u>76.56</u>
ธนาคารแห่งประเทศไทย	NON	12,352,109,376.93	76.56
(ข) กลุ่มตราสารของธนาคารที่มีกฎหมายเฉพาะจัดตั้งขึ้น ธนาคารพาณิชย์ หรือบริษัทเงินทุน เป็นผู้ออก ผู้ส่งจ่าย ผู้รับรอง		<u>2,749,019,617.32</u>	<u>17.04</u>
ธนาคารยูโอบี จำกัด (มหาชน)	AAA	368,931,744.90	2.29
ธนาคารกรุงศรีอยุธยา จำกัด (มหาชน)	AAA	20,384,657.46	0.13
ธนาคาร ทิสโก้ จำกัด (มหาชน)	A	46,629.06	0.00
ธนาคารกรุงไทย จำกัด (มหาชน)	AAA	1,302,461,298.11	8.07
ธนาคารกสิกรไทย จำกัด (มหาชน)	AA+	342,987,486.43	2.13
ธนาคารไทยพาณิชย์ จำกัด (มหาชน)	AA+	3,986,908.74	0.02
ธนาคารทหารไทยธนชาติ จำกัด (มหาชน)	AA+	56,839,755.53	0.35
ธนาคารเกียรตินาคินภัทร จำกัด (มหาชน)	A	1,355,909.94	0.01
ธนาคารกรุงเทพ จำกัด (มหาชน)	AA+	652,025,227.15	4.04
(ค) กลุ่มตราสารที่มีอันดับความน่าเชื่อถืออยู่ในอันดับที่สามารถลงทุนได้		<u>1,392,096,024.68</u>	<u>8.63</u>
บริษัท ศุภาลย์ จำกัด (มหาชน)	A	19,798,613.00	0.12
บริษัท เอ็ม บี เค จำกัด (มหาชน)	A-	109,371,760.10	0.68
บริษัทแลนด์แอนด์เฮาส์ จำกัด (มหาชน)	A	334,822,254.99	2.08
บริษัท เอสซีบี เอกซ์ จำกัด (มหาชน)	AA+	3,079,763.62	0.02
บริษัท ซีพีเอฟ (ประเทศไทย) จำกัด (มหาชน)	A	925,023,632.97	5.73
(ง) กลุ่มตราสารที่มีอันดับความน่าเชื่อถืออยู่ในอันดับต่ำกว่าอันดับที่สามารถลงทุนได้ หรือไม่ได้รับการจัดอันดับความน่าเชื่อถือ		<u>0.00</u>	<u>0.00</u>
รวมทั้งหมด		<u>16,493,225,018.93</u>	

AIMC Category Performance Report

Report as of 30/04/2025



Return statistics for Thailand Mutual Funds

AIMC Category	Average Trailing Return (%)							Average Calendar Year Return (%)				
	YTD	3M	6M	1Y	3Y	5Y	10Y	2020	2021	2022	2023	2024
Aggressive Allocation	-8.67	-5.22	-11.66	-8.35	-6.51	0.28	-0.67	-3.71	17.78	-4.53	-7.42	0.46
ASEAN Equity	-6.56	-4.52	-10.16	-7.10	-2.63	6.30	-1.67	-0.64	24.80	-13.86	1.56	4.16
Asia Pacific Ex Japan	-0.76	-0.47	-4.93	-3.57	-3.81	2.36	0.16	22.91	1.18	-22.07	-0.41	2.73
China Equity - A Shares	-4.03	-1.78	-3.87	-1.48	-10.11	-4.64	-3.80	25.04	-5.44	-29.54	-20.95	5.66
Commodities Energy	-16.41	-18.92	-15.04	-24.10	-11.83	16.70	-3.80	-31.41	65.84	13.47	-6.87	2.67
Commodities Precious Metals	23.33	16.89	15.91	31.82	14.73	10.92	7.92	22.38	-1.94	-0.75	9.13	20.70
Conservative Allocation	-0.32	0.11	-0.67	1.35	-0.24	0.36	0.90	-1.01	3.30	-3.64	-0.77	2.05
Emerging Market	2.10	0.83	-2.26	-1.79	-1.03	1.43	-0.42	9.34	-3.39	-24.38	4.34	0.73
Emerging Market Bond Discretionary F/X Hedge or Unhedge	0.20	0.12	-0.59	3.25	0.32	-0.20	-0.19	3.86	-4.60	-16.35	0.95	6.59
Energy	-8.43	-4.93	-16.10	-15.36	-10.15	-2.29	0.75	-6.55	10.38	4.80	-17.51	-10.22
Equity General	-12.02	-6.70	-16.60	-12.45	-8.97	-0.23	-1.02	-9.61	19.03	1.13	-11.89	-1.94
Equity Large Cap	-11.45	-6.83	-15.44	-8.34	-6.60	0.81	-0.35	-11.22	16.03	1.98	-9.68	1.34
Equity Small - Mid Cap	-20.23	-9.48	-24.98	-27.80	-16.43	1.01	-0.84	8.03	41.13	-4.54	-13.32	-10.71
European Equity	3.48	-2.56	3.24	2.07	4.28	9.45	4.81	4.62	24.32	-19.18	12.78	6.42
Foreign Investment Allocation	-1.72	-3.35	-1.89	0.62	-0.35	2.21	1.72	6.41	6.90	-17.03	5.10	4.18
Fund of Property Fund - Foreign	0.05	-1.08	-5.11	1.05	-8.23	-0.19	0.10	-6.59	19.71	-25.78	0.76	-6.07
Fund of Property Fund - Thai	-4.97	-2.62	-6.24	4.03	-4.06	-5.59	1.05	-22.42	-0.22	-6.52	-8.90	5.35
Fund of Property fund -Thai and Foreign	-1.34	0.07	-4.84	1.30	-5.14	-2.47	2.02	-10.25	2.89	-11.27	-1.75	-2.84
Global Bond Discretionary F/X Hedge or Unhedge	1.19	0.99	1.32	1.23	-0.03	0.37	-1.16	3.62	1.13	-10.76	2.91	0.54
Global Bond Fully F/X Hedge	1.92	1.38	1.48	4.05	-0.03	-0.20	0.06	4.32	0.11	-11.41	2.96	0.53
Global Equity	-4.25	-7.41	-2.46	1.43	1.68	6.65	3.66	19.50	12.50	-26.93	12.61	4.82
Global Equity - Alternative Energy	-8.78	-8.87	-14.32	-14.41	-12.62	-	-	-	3.05	-24.42	-7.94	-16.30
Global Equity - Consumer Goods and Services	-7.85	-12.00	-3.73	-1.61	-2.74	2.68	2.01	40.42	-3.47	-32.19	9.05	10.24
Global Equity - Infrastructure	9.35	7.89	6.48	13.59	1.19	5.72	-	-7.34	18.09	-8.55	0.86	1.70
Global Equity Fully FX Risk Hedge	-1.53	-5.14	-0.46	5.77	3.39	7.74	5.27	12.76	15.15	-26.77	16.62	10.38
Greater China Equity	3.65	3.16	1.33	9.26	-6.02	-5.22	-3.04	19.36	-12.55	-27.20	-20.20	6.94
Health Care	-2.00	-7.58	-8.18	-8.24	-4.23	2.32	2.65	22.59	7.71	-19.54	-0.96	-7.28
High Yield Bond	-0.33	-0.85	-0.09	2.81	1.25	2.83	1.79	3.44	4.76	-11.58	5.39	4.99
India Equity	-4.58	1.93	-6.38	-2.51	4.08	13.28	6.88	12.07	26.23	-12.85	16.93	10.37
Japan Equity	-3.92	-4.06	-1.29	-0.90	9.27	10.52	5.13	10.09	6.73	-10.31	20.35	15.09
Long Term General Bond	3.21	3.18	4.56	6.68	2.98	1.84	2.02	2.26	-0.26	-1.11	1.01	5.36
Mid Term General Bond	1.61	1.47	2.22	3.90	2.37	1.48	1.67	1.03	0.67	0.14	1.61	2.85
Mid Term Government Bond	1.65	1.55	2.28	4.07	2.02	1.02	1.24	1.40	-0.18	-0.06	0.81	2.87
Moderate Allocation	-2.87	-2.25	-3.84	-0.80	-1.49	0.52	0.29	-3.46	7.56	-5.37	-1.48	2.39
Money Market General	0.62	0.47	0.94	1.98	1.48	0.99	1.02	0.55	0.20	0.38	1.43	2.06
Money Market Government	0.57	0.42	0.89	1.92	1.41	0.92	0.98	0.42	0.18	0.35	1.38	1.98
Other Global Sector Equity	-0.29	-3.84	-3.72	-2.02	-3.64	11.59	3.48	9.13	16.37	-22.72	3.42	-0.38
SET 50 Index Fund	-12.35	-7.13	-15.15	-4.33	-5.20	-0.01	-0.17	-13.21	10.81	4.94	-11.29	6.24
Short Term General Bond	0.79	0.63	1.17	2.25	1.66	1.09	1.18	0.49	0.42	0.55	1.53	2.11
Short Term Government Bond	0.65	0.55	0.99	1.99	1.39	0.89	0.92	0.50	-0.05	0.39	1.18	1.98
Technology Equity	-9.37	-12.46	-2.43	4.66	4.16	5.39	-	50.15	8.42	-43.73	47.90	18.49

Thai Free Hold	-0.23	-0.26	0.26	0.47	2.69	0.79	2.58	-2.43	-0.63	3.30	2.56	0.97
Thai Mixed (between free and lease hold)	0.44	0.24	0.85	-0.32	-1.48	-1.17	1.77	3.19	-1.48	-4.43	-1.13	-3.10
US Equity	-8.10	-10.36	-3.60	5.68	5.91	8.52	7.98	20.70	22.20	-30.01	25.04	18.66
Vietnam Equity	-12.13	-11.41	-11.06	-12.23	-9.47	6.31	-	15.86	45.20	-32.85	7.81	8.60