

กองทุนเปิด ยูโนเต็ด เอ็ดดูเคชั่น เทคโนโลยี ฟันด์ (UEDTECH)

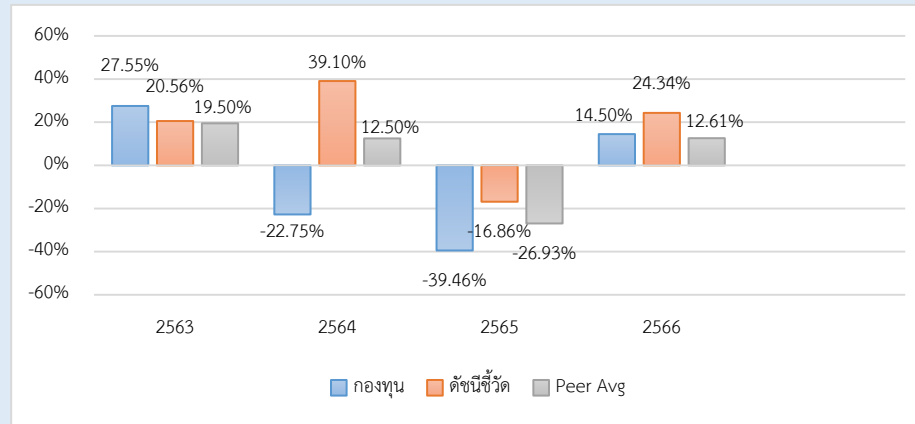
ประเภทกองทุนรวม / กลุ่มกองทุนรวม

- กองทุนรวมตราสารทุน
- Feeder Fund / กองทุนที่เน้นลงทุนแบบมีความเสี่ยงต่างประเทศ
- กลุ่ม Global Equity

นโยบายและกลยุทธ์การลงทุน

- ลงทุนในกองทุน Credit Suisse (Lux) Edutainment Equity Fund - Class IBP USD
- กองทุนหลักจัดตั้งและบริหารจัดการโดย Credit Suisse Fund Management S.A.
- กองทุนอาจพิจารณาลงทุนใน Derivatives เพื่อเพิ่มประสิทธิภาพการบริหารการลงทุน
- มุ่งหวังให้ผลประกอบการเคลื่อนไหวตามกองทุนหลัก โดยกองทุนหลักใช้กลยุทธ์การบริหารกองทุนเชิงรุก (active management)

ผลการดำเนินงานและดัชนีชี้วัดย้อนหลัง 5 ปีปฏิทิน



ผลการดำเนินงานย้อนหลังแบบปักหมุด (%)

	YTD	3 เดือน	6 เดือน	1 ปี*
กองทุน	-3.17	1.81	4.00	7.78
ดัชนีชี้วัด	11.18	13.12	16.00	28.98
ค่าเฉลี่ยในกลุ่มเดียวกัน	2.35	7.19	5.31	9.63
ความผันผวนกองทุน	6.80	7.60	11.76	18.83
ความผันผวนดัชนีชี้วัด	5.46	6.53	9.43	13.72
	3 ปี*	5 ปี*	10 ปี*	ตั้งแต่จัดตั้ง*
กองทุน	-21.03	-	-	-10.37
ดัชนีชี้วัด	15.47	-	-	18.97
ค่าเฉลี่ยในกลุ่มเดียวกัน	-2.17	-	-	-
ความผันผวนกองทุน	24.08	-	-	23.20
ความผันผวนดัชนีชี้วัด	15.43	-	-	15.16

หมายเหตุ : * % ต่อปี

ระดับความเสี่ยง



ลงทุนในตราสารทุนเป็นหลักโดยเฉลี่ยในรอบปี ไม่น้อยกว่า 80% ของ NAV

ข้อมูลกองทุนรวม

วันจดทะเบียนกองทุน	21 พ.ค. 2563
วันเริ่มต้น class	ไม่มีการแบ่ง Class
นโยบายการจ่ายเงินปันผล	ไม่จ่าย
อายุกองทุน	ไม่กำหนด

ผู้จัดการกองทุนรวม

นาย ธนวัฒน์ สุริโยตร	15 มิ.ย. 2565
นาย กาย ศิริพรรณพร	15 พ.ค. 2565

ดัชนีชี้วัด

ดัชนี MSCI World ESG Leaders (NR) ซึ่งเป็นดัชนีเปรียบเทียบผลการดำเนินงานของกองทุนหลัก (Master Fund) ปรับด้วยอัตราแลกเปลี่ยนเพื่อเทียบค่าสกุลเงินบาท ณ วันที่คำนวณผลตอบแทน (100%)

หมายเหตุ :

- กองทุนใช้ตัวชี้วัดดังกล่าว โดยมีวัตถุประสงค์เพื่อเปรียบเทียบระหว่างดัชนีชี้วัดและผลการดำเนินงานของกองทุนรวม

คำเตือน

- การลงทุนในกองทุนรวมไม่ใช้การฝากเงิน
- ผลการดำเนินงานในอดีตของกองทุนรวม ไม่ได้เป็นสิ่งยืนยันถึงผลการดำเนินงานในอนาคต

หนังสือชี้ชวนฉบับเต็ม



“ผู้ลงทุนสามารถศึกษาเครื่องมือบริหารความเสี่ยงด้านสภาพคล่องได้ในหนังสือชี้ชวนฉบับเต็ม”

การซื้อหน่วยลงทุน

วันทำการซื้อ: ทุกวันทำการ

เวลาทำการ: 08:30 - 15:30 น.

การซื้อครั้งแรกขั้นต่ำ: ไม่กำหนด

การซื้อครั้งถัดไปขั้นต่ำ: ไม่กำหนด

หมายเหตุ: ระยะเวลาการรับเงินค่าขายคืน ยังมีได้นับรวมวันหยุดทำการในต่างประเทศ

การขายคืนหน่วยลงทุน

วันทำการขายคืน: ทุกวันทำการ

เวลาทำการ: 08:30 - 14:00 น.

การขายคืนขั้นต่ำ: ไม่กำหนด

ยอดคงเหลือขั้นต่ำ: ไม่กำหนด

ระยะเวลาการรับเงินค่าขายคืน: T+4 วันทำการ

หลังจากวันทำการขายคืน

ข้อมูลเชิงสถิติ

Maximum Drawdown	-61.15 %
Recovering Period	-
FX Hedging	92.61 %
Sharpe Ratio	-0.87
Alpha	-36.49
Beta	1.09
อัตราส่วนหมุนเวียนการลงทุน	0.08 เท่า

ค่าธรรมเนียมที่เรียกเก็บจากกองทุนรวม (% ต่อปีของ NAV)

ค่าธรรมเนียม	สูงสุดไม่เกิน	เก็บจริง
การจัดการ	2.1400	1.6050
รวมค่าใช้จ่าย	5.3500	1.9144

หมายเหตุ: บริษัทจัดการอาจพิจารณาเปลี่ยนแปลงค่าธรรมเนียมที่เรียกเก็บจริงเพื่อให้สอดคล้องกับกลยุทธ์หรือค่าใช้จ่ายในการบริหารจัดการ

ค่าธรรมเนียมที่เรียกเก็บจากผู้ถือหน่วย (% ของมูลค่าซื้อขาย)

ค่าธรรมเนียม	สูงสุดไม่เกิน	เก็บจริง
การขาย	2.00	1.50
การรับซื้อคืน	2.00	ยกเว้น
การสับเปลี่ยนหน่วยลงทุนเข้า	2.00	1.50
การสับเปลี่ยนหน่วยลงทุนออก	2.00	ยกเว้น
การโอนหน่วย	10 บาท/500 หน่วย หรือเศษของ 500 หน่วย	ยกเว้น

หมายเหตุ:

- กรณีสับเปลี่ยนเข้า บลจ.จะไม่คิดค่าธรรมเนียมการขาย
- บริษัทจัดการอาจพิจารณาเปลี่ยนแปลงค่าธรรมเนียมที่เรียกเก็บจริง เพื่อให้สอดคล้องกับกลยุทธ์หรือค่าใช้จ่ายในการบริหารจัดการ
- บริษัทจัดการอาจคิดค่าธรรมเนียมที่เรียกเก็บจากผู้ถือหน่วยกับผู้สั่งซื้อหรือผู้ถือหน่วยลงทุน แต่ละกลุ่มหรือแต่ละคนไม่เท่ากันได้

สัดส่วนประเภททรัพย์สินที่ลงทุน

breakdown	% NAV
1. หน่วยลงทุนของกองทุนระหว่างประเทศ	100.84
2. อื่น ๆ	-0.84

ทรัพย์สินที่ลงทุน 5 อันดับแรก

holding	% NAV
1. หน่วยลงทุน : Credit Suisse (Lux) Edutainment Equity Fund	100.84
2. อื่นๆ	-0.84

การลงทุนในกองทุนอื่นเกินกว่า 20% (กองทุนในประเทศและกองทุนต่างประเทศ)

ชื่อกอง : Credit Suisse (Lux) Edutainment Equity Fund

ISIN code : LU2025863684

Bloomberg code : CRLEEIU LX

คำอธิบาย

Maximum Drawdown : เปอร์เซ็นต์ผลขาดทุนสูงสุดของกองทุนรวมในระยะเวลา 5 ปี ย้อนหลัง (หรือตั้งแต่จัดตั้งกองทุนกรณีที่ยังไม่ครบ 5 ปี) โดยวัดจากระดับ NAV ต่อหน่วยที่จุดสูงสุด ไปจนถึงจุดต่ำสุดในช่วงที่ NAV ต่อหน่วยปรับตัวลดลง ค่า Maximum Drawdown เป็นข้อมูลที่ช่วยให้ทราบถึงความเสี่ยงที่อาจจะขาดทุนจากการลงทุนในกองทุนรวม

Recovering Period : ระยะเวลาการฟื้นตัว เพื่อเป็นข้อมูลให้ผู้ลงทุนทราบถึงระยะเวลาดังแต่การขาดทุนสูงสุดจนถึงระยะเวลาที่ฟื้นทุนเริ่มต้นใช้ระยะเวลาสั้นเท่าใด

อัตราส่วนหมุนเวียนการลงทุน : ความถี่ของการซื้อขายหลักทรัพย์ในพอร์ตการลงทุนในช่วงเวลาใดช่วงเวลานึง โดยคำนวณจากมูลค่าที่ต่ำกว่าระหว่างผลรวมของมูลค่าการซื้อขายหลักทรัพย์กับผลรวมของมูลค่าการซื้อขายหลักทรัพย์ของกองทุนรวมในรอบระยะเวลา 1 ปีหารด้วยมูลค่า NAV ของกองทุนรวมเฉลี่ยในรอบระยะเวลาเดียวกัน กองทุนรวมที่มีค่า portfolio turnover สูง บ่งชี้ถึงการซื้อขายหลักทรัพย์บ่อยครั้งของผู้จัดการกองทุนและทำให้มีต้นทุนการซื้อขายหลักทรัพย์ที่สูง จึงต้องพิจารณาเปรียบเทียบกับผลการดำเนินงานของกองทุนรวมเพื่อประเมินความคุ้มค่าของการซื้อขายหลักทรัพย์ดังกล่าว

Sharpe Ratio : อัตราส่วนระหว่างผลตอบแทนส่วนเพิ่มของกองทุนรวมเปรียบเทียบกับความเสี่ยงจากการลงทุน โดยคำนวณจากผลต่างระหว่างอัตราผลตอบแทนของกองทุนรวมกับอัตราผลตอบแทนที่ปราศจากความเสี่ยง (risk-free rate) เปรียบเทียบกับค่าเบี่ยงเบนมาตรฐาน (standard deviation) ของกองทุนรวม ค่า Sharpe Ratio สะท้อนถึงอัตราผลตอบแทนที่กองทุนรวมควรได้รับเพิ่มขึ้นเพื่อชดเชยกับความเสี่ยงที่กองทุนรวมรับมา โดยกองทุนรวมที่มีค่า Sharpe Ratio สูงกว่าจะเป็นกองทุนที่มีประสิทธิภาพในการบริหารจัดการลงทุนที่ดีกว่า เนื่องจากได้รับผลตอบแทนส่วนเพิ่มที่สูงกว่าภายใต้ระดับความเสี่ยงเดียวกัน

Alpha : ผลตอบแทนส่วนเกินของกองทุนรวมเมื่อเปรียบเทียบกับดัชนีชี้วัด (benchmark) โดยค่า Alpha ที่สูง หมายถึง กองทุนสามารถสร้างผลตอบแทนได้สูงกว่าดัชนีชี้วัด ซึ่งเป็นผลจากประสิทธิภาพของผู้จัดการกองทุนในการคัดเลือกหรือจังหวะเข้าลงทุนในหลักทรัพย์ได้อย่างเหมาะสม

Beta : ระดับและทิศทางการเปลี่ยนแปลงของอัตราผลตอบแทนของหลักทรัพย์ในพอร์ตการลงทุน โดยเปรียบเทียบกับอัตราการเปลี่ยนแปลงของตลาด Beta น้อยกว่า 1 แสดงว่าหลักทรัพย์ในพอร์ตการลงทุนมีการเปลี่ยนแปลงของอัตราผลตอบแทนน้อยกว่าการเปลี่ยนแปลงของอัตราผลตอบแทนของกลุ่มหลักทรัพย์ของตลาด Beta มากกว่า 1 แสดงว่า หลักทรัพย์ในพอร์ตการลงทุนมีการเปลี่ยนแปลงของอัตราผลตอบแทนมากกว่าการเปลี่ยนแปลงของอัตราผลตอบแทนของกลุ่มหลักทรัพย์ของตลาด

Tracking Error : เพื่อให้พิจารณาความผันผวนของส่วนต่างของผลตอบแทนเฉลี่ยของกองทุนรวมและผลตอบแทนของดัชนีชี้วัด ซึ่งสะท้อนให้เห็นถึงประสิทธิภาพในการเลียนแบบดัชนีชี้วัดของกองทุนรวมว่ามีการเบี่ยงเบนออกไปจากดัชนีชี้วัด มากน้อยเพียงใด เช่น หากกองทุนรวมมีค่า TE ต่ำ แสดงว่า อัตราผลตอบแทนของกองทุนมีการเบี่ยงเบนออกไปจากดัชนีชี้วัดในอัตราที่ต่ำ ดังนั้น กองทุนรวมนี้จึงมีประสิทธิภาพในการเลียนแบบดัชนีชี้วัด ในขณะที่ยังคงมีค่า TE สูง แสดงว่าอัตราผลตอบแทนของกองทุนรวมมีการเบี่ยงเบนออกจากดัชนีชี้วัดในอัตราที่สูง ดังนั้น โอกาสที่ผลตอบแทนการลงทุนจะเป็นไปตามผลตอบแทนของ benchmark ก็จะลดน้อยลง เป็นต้น

Yield to Maturity : อัตราผลตอบแทนจากการลงทุนในตราสารหนี้โดยถึงจนครบกำหนดอายุ ซึ่งคำนวณจากดอกเบี้ยที่จะได้รับในอนาคตตลอดอายุตราสารและเงินต้นที่จะได้รับคืนนำมาคิดเป็นมูลค่าปัจจุบัน โดยใช้ตัวอัตราผลตอบแทนของกองทุนรวมตราสารหนี้ คำนวณจากค่าเฉลี่ยถ่วงน้ำหนักของ Yield to Maturity ของตราสารหนี้แต่ละตัวที่กองทุนมีการลงทุน และเนื่องจาก Yield to Maturity มีหน่วยมาตรฐานเป็นเปอร์เซ็นต์ต่อปี จึงสามารถนำไปใช้เปรียบเทียบอัตราผลตอบแทนระหว่างกองทุนรวมตราสารหนี้ที่มีนโยบายถือครองตราสารหนี้จนครบกำหนดอายุและมีลักษณะการลงทุนที่ใกล้เคียงกันได้

รายละเอียดและอันดับความน่าเชื่อถือของตราสารหนี้ ตราสารกึ่งหนี้กึ่งทุน หรือเงินฝากที่ลงทุนหรือมีไว้

กองทุนเปิด ยูไนเต็ด เอ็ดดูเคชั่น เทคโนโลยี ฟันด์

ณ วันที่ 29 กุมภาพันธ์ 2567

ผู้ออก/ผู้รับรอง/ผู้ค้ำประกัน	อันดับความน่าเชื่อถือ	มูลค่าตามราคาตลาด	%NAV
(ก) กลุ่มตราสารภาครัฐไทย และตราสารภาครัฐต่างประเทศ		0.00	0.00
(ข) กลุ่มตราสารของธนาคารที่มีกฎหมายเฉพาะจัดตั้งขึ้น ธนาคารพาณิชย์ หรือบริษัทเงินทุน เป็นผู้ออก ผู้ส่งจ่าย ผู้รับรอง		546,350.79	1.24
ธนาคารทหารไทยธนชาต จำกัด (มหาชน)	AA+	546,350.79	1.24
(ค) กลุ่มตราสารที่มีอันดับความน่าเชื่อถืออยู่ในอันดับที่สามารถลงทุนได้		0.00	0.00
(ง) กลุ่มตราสารที่มีอันดับความน่าเชื่อถืออยู่ในอันดับต่ำกว่าอันดับที่สามารถลงทุนได้ หรือไม่ได้รับการจัดอันดับความน่าเชื่อถือ		0.00	0.00
	รวมทั้งหมด	546,350.79	

This is a marketing communication.
Please refer to the prospectus/information document of the fund and to the KIID/KID (as applicable) before making any final investment decisions.
For information purposes only, this presentation should not be used as a basis for investment decision.

Asset Management
February 29, 2024

CS (Lux) Edutainment Equity Fund IBP USD



Fund information

Equity

144'703'007

Fund total net assets in USD

Share class TNA, USD 16'472'833	Share class NAV, USD 819.23	Management fee p.a. ¹ 0.60%
MTD (net) return 3.25% Bench. 4.28%	QTD (net) return -2.07% Bench. 6.10%	YTD (net) return -2.07% Bench. 6.10%

Fund details

Investment Manager	Angus Muirhead
Fund launch date	25.09.2019
Share class launch date	25.09.2019
Share class	IBP
Share class currency	USD
Distribution policy	Accumulating
Fund domicile	Luxembourg
ISIN	LU2025863684
Benchmark	MSCI World ESG Leaders (NR)

Investment Policy

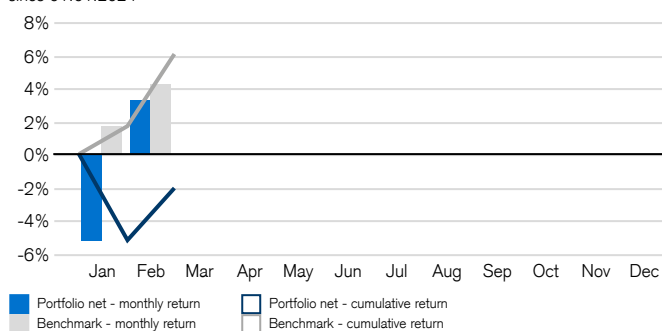
The fund assets are invested globally in innovative companies that disrupt the traditional approach to education along three fast growing subthemes: innovative business models, digital content, and systems & tools. The fund offers a diversified exposure to the Edutainment universe by investing in "pure-play" companies which are typically small to mid-sized. The investment objective is long-term capital appreciation from actively managed exposure to this emerging secular growth theme.



Investing involves risk including the risk of loss of capital. Past performance does not predict future returns. Neither simulated nor historical performance is a reliable indicator for current or future performance.

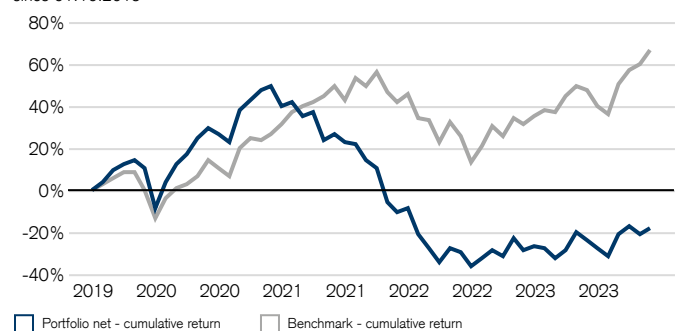
Performance overview - monthly & cumulative

since 01.01.2024



Performance overview - cumulative

since 01.10.2019



Performance overview - monthly & YTD

since 01.01.2024, in %

	Jan	Feb	Mar	Apr	May	Jun	Jul	Aug	Sep	Oct	Nov	Dec	YTD
Portfolio net	-5.16	3.25											-2.07
Benchmark	1.74	4.28											6.10
Relative net	-6.90	-1.03											-8.17

¹ If the currency of a financial product and/or its costs is different from your reference currency, the return and cost may increase or decrease as a result of currency fluctuations.

The individuals mentioned above only conduct regulated activities in the jurisdiction(s) where they are properly licensed, where relevant.

ESG stands for environmental (E), social (S), and governance (G).

Please find the definition of all the acronyms/terms used in this document in the Glossary. Additional important information can be found at the end of the document.

Performance overview - yearly

since 01.10.2019, in %

	2019	2020	2021	2022	2023	2024
Portfolio net	12.36	27.21	-22.51	-37.87	21.00	-2.07
Benchmark	8.34	15.30	24.70	-19.57	25.40	6.10
Relative net	4.02	11.91	-47.22	-18.29	-4.39	-8.17

Performance overview

since 01.10.2019, in %

	Rolling Returns		Annualized Returns			
	1 months	3 months	1 year	3 years	5 years	ITD
Portfolio net	3.25	2.90	14.05	-18.35	n/a	-4.51
Benchmark	4.28	11.11	27.23	9.48	n/a	12.26
Relative net	-1.03	-8.21	-13.18	-27.83	n/a	-16.78

Risk overview - ex post

since 01.10.2019, in %

	Annualized risk, in %			
	1 year	3 years	5 years	ITD
Portfolio volatility	25.15	25.02	n/a	25.29
Benchmark volatility	14.29	17.50	n/a	18.60
Tracking error	14.62	15.62	n/a	14.69

Potential Risks

The Fund's risk and reward profile does not reflect the risk inherent in future circumstances that differ from what the Fund has experienced in the recent past. This includes the following events which are rare but can have a large impact.

- **Credit risk:** Issuers of assets held by the Fund may not pay income or repay capital when due. The Fund's investments generally have low credit risk.
- **Liquidity risk:** Assets cannot necessarily be sold at limited cost in an adequately short timeframe. Part of the Fund's investments may be prone to limited liquidity. The Fund will endeavor to mitigate this risk by various measures.
- **Operational risk:** Deficient processes, technical failures or catastrophic events may cause losses.
- **Political and Legal risks:** Investments are exposed to changes of rules and standards applied by a specific country. This includes restrictions on currency convertibility, the imposing of taxes or controls on transactions, the limitations of property rights or other legal risks.
- **Sustainability risks:** Sustainability risks are environmental, social or governance events or conditions that can have a material negative effect on the return, depending on the relevant sector, industry and company exposure.

The product's investment objectives, risks, charges and expenses, as well as more complete information about the product, are provided in the prospectus (or relevant offering document), which should be read carefully before investing.

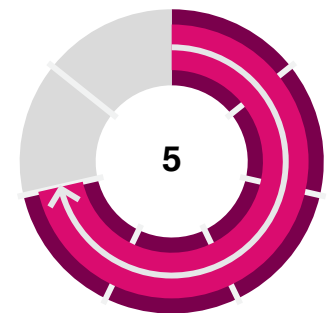
Investors may lose part or all of their invested amount.

The full offering documentation including complete information on risks may be obtained free of charge from a Credit Suisse client advisor, representative, or, where applicable, via Fundsearch (credit-suisse.com/fundsearch).

The investment promoted in this marketing material concerns the acquisition of units or shares in a fund and not of any underlying assets. The underlying assets are owned by the fund only.

Risk profile²

PRIIP SRI



Larger values (up to 7) indicate higher risk while lower values (up to 1) indicate lower risk.

Asset breakdown by subtheme

In % of total economic exposure

	in %	Portfolio
Innovative Services	36.32	<div style="width: 36.32%;"></div>
Digital Content	35.08	<div style="width: 35.08%;"></div>
Systems and Tools	28.00	<div style="width: 28.00%;"></div>
Cash/Cash Equivalents	0.60	<div style="width: 0.60%;"></div>

Asset breakdown by risk currency

In % of total economic exposure

	in %	Portfolio
USD	42.61	<div style="width: 42.61%;"></div>
JPY	14.34	<div style="width: 14.34%;"></div>
GBP	11.63	<div style="width: 11.63%;"></div>
CNY	10.32	<div style="width: 10.32%;"></div>
BRL	7.00	<div style="width: 7.00%;"></div>
CAD	4.52	<div style="width: 4.52%;"></div>
EUR	4.38	<div style="width: 4.38%;"></div>
AUD	2.10	<div style="width: 2.10%;"></div>
ILS	1.78	<div style="width: 1.78%;"></div>
Others	1.33	<div style="width: 1.33%;"></div>

Asset breakdown by risk country

In % of total market value

	in %	Portfolio
United States	43.01	<div style="width: 43.01%;"></div>
Japan	14.31	<div style="width: 14.31%;"></div>
United Kingdom	11.58	<div style="width: 11.58%;"></div>
China	10.32	<div style="width: 10.32%;"></div>
Brazil	6.49	<div style="width: 6.49%;"></div>
Canada	4.51	<div style="width: 4.51%;"></div>
Netherlands	4.36	<div style="width: 4.36%;"></div>
Australia	2.08	<div style="width: 2.08%;"></div>
Israel	1.78	<div style="width: 1.78%;"></div>
India	0.97	<div style="width: 0.97%;"></div>
Others	0.59	<div style="width: 0.59%;"></div>

Key figures

	Portfolio	Benchmark
Number of securities	40	695

² The risk indicator assumes you keep the Product for 7 years. The actual risk can vary significantly if you redeem at an early stage and you may get back less. The Summary Risk Indicator is a guide to the level of risk of this Product compared to other products. It shows how likely it is that the Product will lose money because of movements in the markets. Be aware of currency risk if your reference currency differs from the currency of the Product. You may receive payments in a different currency, so the final return you will get depends on the exchange rate between the two currencies. Investors shall note that the Product may be exposed to further risks such as operational, counterparty, political, sustainability and legal risks that are not included in the Summary Risk Indicator. This Product does not include any protection from future market performance so you could lose some or all of your investment.

Fund Statistics - ex post

	Portfolio	Benchmark	1 year Relative	Portfolio	Benchmark	3 years Relative
Beta			1.52			1.12
Information ratio			-0.63			-1.77
Maximum drawdown, in %	-14.27	-8.99		-57.38	-27.00	

Past performance does not predict future returns. Neither simulated nor historical performance is a reliable indicator for current or future performance.

Largest contributors and detractors

MTD as of 29.02.2024

Contributors ³	Total return	Weight	Portfolio Total effect	Detractors ³	Total return	Weight	Portfolio Total effect
DUOLINGO INC CLASS A	33.49%	3.48%	1.10%	UDEMY INC	-16.83%	3.65%	-0.63%
NEW ORIENTAL EDUCATION & TECHNOLOG	24.42%	4.30%	0.96%	COURSERA INC	-16.05%	2.71%	-0.48%
UT GROUP LTD	43.24%	2.17%	0.80%	POWERSCHOOL HOLDINGS INC CLASS A	-11.25%	3.00%	-0.34%
DOCEBO INC	23.59%	2.55%	0.58%	TECHNOPRO HOLDINGS INC	-14.69%	2.08%	-0.33%
BRIGHT HORIZONS FAMILY SOLUTIONS I	16.92%	3.27%	0.53%	UNITY SOFTWARE INC	-9.44%	3.19%	-0.28%

Largest contributors and detractors

YTD as of 29.02.2024

Contributors ³	Total return	Weight	Portfolio Total effect	Detractors ³	Total return	Weight	Portfolio Total effect
NEW ORIENTAL EDUCATION & TECHNOLOG	33.76%	4.26%	1.20%	UNITY SOFTWARE INC	-28.25%	3.36%	-1.07%
UT GROUP LTD	35.27%	1.95%	0.65%	UDEMY INC	-23.26%	3.84%	-0.92%
BRIGHT HORIZONS FAMILY SOLUTIONS I	21.90%	3.07%	0.62%	TECHNOPRO HOLDINGS INC	-24.01%	2.14%	-0.56%
WOLTERS KLUWER NV	11.02%	3.96%	0.40%	COURSERA INC	-17.05%	2.80%	-0.49%
RELX PLC	10.41%	4.12%	0.40%	INSTRUCTURE HOLDINGS INC	-15.11%	3.12%	-0.49%

Performance commentary

The fund delivered a positive absolute return but underperformed the benchmark over the month. In February, Duolingo was the strongest performer, up +33%, after reporting a solid beat and raise on revenue and profitability, driven by robust adoption of the family plan and better-than-expected New Year's promotion (source: Duolingo Earnings Results, Feb. 28, 2024). New Oriental was the second-largest contributor, up +24% (in USD terms) over the month, as investor sentiment improved following the release of a statement by the Chinese Ministry of Education which recognized tutoring as a valuable supplement to school education. UT Group was also a top contributor, up +43% (in USD terms), boosted by results in line with expectations and a new pay-out policy, which will shift the total pay-out ratio from 30% to a 60% dividend pay-out ratio (source: UT Group Earnings Result, Feb. 9, 2024). In contrast, Udeemy was the worst detractor over the month, down -16%, as management admitted execution issues in South Korea and Vietnam during the latest earnings call, and their full-year guidance fell short of consensus expectations (source: Udeemy Earnings Results, Feb. 15, 2024).

Market comments

In February, equity markets continued their positive momentum reaching new record highs, helped by Nvidia publishing results strongly ahead of expectations as demand for artificial intelligence (AI) chips continues to soar. Although equity markets propelled higher over the month, US inflation numbers came in higher than expected, delaying expectations for the US Federal Reserve to start cutting rates. European economies struggled during the month, with Germany printing another quarter of negative economic growth and the UK reporting a gross domestic product (GDP) contraction. In China, commercial banks reduced the 5-year mortgage rate to support its troubled property market.

In the Edutainment space, AI could represent a long-term opportunity for the upskilling and reskilling markets, as companies have to train their workforce to use generative AI. In fact, according to a Boston Consulting Group survey, only 6% of organizations managed to train more than 25% of their workforce to use generative AI (sources: Boston Consulting Group, Jan. 12, 2024; Coursera Earnings Results, Feb. 1, 2024; Udeemy Earnings Results, Feb. 15, 2024).

Comments on transactions

We currently have 38 companies in the portfolio, and we are positioned with a slightly higher weighting in the "Future of Work" vertical, resulting from continuous rebalancing of the portfolio according to the relative performance of our holdings, and the initiation of a new position in the fund: a US company providing research to enhance customers' decisions. The fund remains well diversified by country and is made up of mostly small to mid-cap companies.

This commentary is intended only to describe past performance of the investment strategy. The strategy invests in individual securities which are owned in the strategy as part of a carefully constructed and diversified portfolio. The information presented in this commentary may be based on the assessment of CS' portfolio managers. Market developments described in this document are subject to a number of risks and uncertainties and are neither reliable indicators nor a guarantee of future results/performance. The information in this commentary may change after the date of issuance of this document without notice and should not be construed as a recommendation to buy or sell individual securities named herein.

³ The individual entities and/or instruments mentioned on this page are meant for illustration purposes only and are not intended as a solicitation or an offer to buy or sell any interest or any investment.

Key identifiers

Instrument Name	Credit Suisse (Lux) Edutainment Equity Fund IBP USD
ISIN	LU2025863684
Bloomberg ticker	CRLEEIU LX
Valor no.	48854228
Benchmark	MSCI World ESG Leaders (NR)
Benchmark Bloomberg ticker	NGSINU

Key facts

Fund management company	Credit Suisse Fund Management S.A.
UCITS	Yes
SFDR Classification	Article 9
Accounting year end	31. May
Securities lending	No
Ongoing charges ⁴	0.90%
Performance fee	15.00%
Subscription notice period	daily
Subscription settlement period	T + 2
Redemption notice period	daily
Redemption settlement period	T + 2
Cut-off time	15:00 CET
Swinging single pricing (SSP ⁶)	partial swing NAV

ESG Approach

This fund has sustainable investments as a primary investment objective (within the meaning of Art. 9 of Regulation (EU) 2019/2088 on sustainability-related disclosures in the financial services sector). The objective is attained through a dedicated investment process focusing on investments in themes and sectors whose economic activities address specific ESG (environmental, social and governance) challenges according to the CSAM Sustainable Investing Policy (www.credit-suisse.com/esg), including norms-based, values-based and business conduct exclusions. For further information about the ESG investment criteria and the sustainability-related aspects of the fund please consider the legal and regulatory documents of the fund (such as, e.g., the prospectus) and visit www.credit-suisse.com/esg. In addition to sustainability-related aspects, the decision to invest in the fund should take into account all objectives and characteristics of the fund as described in its prospectus, or in the information which is to be disclosed to investors in accordance with applicable regulations.

Certain data points are provided for mere transparency purposes and are not linked to a specific ESG investment process, nor to CSAM ESG methodology. For details about the fund's ESG decision-making process, please refer to the fund's prospectus.

ESG Characteristics

ESG Benchmark	Exclusion Criteria	ESG Integration	Active Ownership ⁵	Sustainable Investment Objective
<input checked="" type="checkbox"/>	<input checked="" type="checkbox"/>	<input checked="" type="checkbox"/>	<input checked="" type="checkbox"/>	<input checked="" type="checkbox"/>

ESG Overview

According to MSCI methodology. Fund performance against benchmark: MSCI World ESG Leaders (NR).

	Portfolio	Benchmark
ESG Rating	A	AA
ESG Quality score	6.36	7.77
Environmental score	7.27	6.65
Social score	4.99	5.46
Governance score	5.82	5.99
Coverage for Rating/Scoring	82.76%	99.99%
Weighted Average Carbon Intensity (Tons of CO ₂ e/\$M sales)	21.13	60.26
Coverage for Carbon Intensity	82.76%	99.82%

Note: The total carbon intensity figure shown in this section may be higher than the total in the breakdown graph. This is because the figure is normalized, and actual weights are inflated because of limited data coverage. For further information on the MSCI methodology for the above listed ESG data points, please refer to the glossary.

⁴ If the currency of a financial product and/or its costs is different from your reference currency, the return and cost may increase or decrease as a result of currency fluctuations.

⁵ Active Ownership is part of the fund's strategy to act in the best interests of its investors and to preserve and optimize the long-term value of their investments. To promote best practices and to ensure that the investee companies are sustainable and successful in the long term, Active Ownership is designed to influence the investee companies on two levels: first, through proxy voting, and second, through engagement. In the case of investments in other funds (Target Funds), the fund has no or only limited ability to exercise Active Ownership on the Target Fund, resp. on the Target Funds' investee companies.

Top 10 positions - ESG Characteristics

In terms of the fund's total economic exposure. Certain data points disclosed in this table are provided for mere transparency purposes and are not linked to a specific ESG investment process, nor to CSAM ESG methodology. For details about the fund's ESG decision-making process, please refer to the fund's prospectus. Source: MSCI

Instrument Name ⁶	Weight in portfolio	GICS sector	MSCI ESG Rating	Controversy flag	Environmental score	Social score	Governance score	Carbon intensity score (tCO ₂ e / \$M sales)
INFORMA PLC	4.71%	Communication Services	AAA	Green	10.00	5.80	7.40	2.40
RELX PLC	4.61%	Industrials	AAA	Green	10.00	6.50	8.40	4.10
WOLTERS KLUWER NV	4.36%	Industrials	AAA	Green	10.00	6.10	8.00	3.80
NEW ORIENTAL EDUCATION & TECHNOLOG	4.28%	Consumer Discretionary	BB	Green	7.70	4.30	3.30	30.90
WORKDAY INC CLASS A	4.25%	Information Technology	AAA	Green	6.00	7.50	4.50	10.20
DUOLINGO INC CLASS A	4.18%	Consumer Discretionary	B	Green	6.70	2.90	4.60	80.90
STRIDE INC	4.10%	Consumer Discretionary	A	Green	8.00	4.00	6.90	70.30
MSCI INC	3.75%	Financials	n.a.	n.a.	-	-	-	-
BRIGHT HORIZONS FAMILY SOLUTIONS I	3.62%	Consumer Discretionary	AAA	Green	5.90	7.50	5.40	28.60
UPWORK INC	3.31%	Industrials	A	Green	9.20	4.60	6.40	0.60

Note: All ESG data points in the table refer to an underlying issuer as applicable (e.g., an equity issuer in case of a convertible bond). For further information on the methodology for the above listed ESG data points, please refer to the glossary.

Asset breakdown by ESG rating

In % of total economic exposure. Fund performance against benchmark: MSCI World ESG Leaders (NR). Source: MSCI ESG rating

	Portfolio	Benchmark	Portfolio Benchmark
AAA	22.70	25.77	
AA	14.09	44.53	
A	11.38	22.58	
BBB	10.31	6.60	
BB	15.54	0.51	
B	8.74	-	
CCC	-	-	
Not ratable	0.59	0.01	
No data coverage	16.65	-	

Note: For further information on MSCI's ESG rating methodology and the difference between categories "not ratable" and "no data coverage", please refer to the glossary.

Carbon emission intensity contribution by GICS sector

Tons of CO₂ equivalent emission intensity (GHG scopes 1 & 2) per \$m sales, by GICS sector split. Fund performance against benchmark: MSCI World ESG Leaders (NR). Source: MSCI

	Portfolio	Benchmark	Portfolio Benchmark
Consumer Discretionary	15.52	2.54	
Information Technology	1.04	5.32	
Industrials	0.67	10.05	
Communication	0.18	0.98	
Others	0.09	41.26	
Total	17.49	60.15	

Note: Security weighted data coverage is 82.76% for the portfolio. The total shown in this section may be lower than the one in the 'ESG Overview' section. This is because the figures in this breakdown are not normalized and use the actual weights. For further information on the Carbon emission intensity, please refer to the glossary.

Asset breakdown by ESG controversy flag

In % of fund total economic exposure to investee companies. Fund performance against benchmark: MSCI World ESG Leaders (NR). Source: MSCI

	Portfolio	Benchmark	Portfolio Benchmark
Green	76.79	40.73	
Yellow	5.44	42.35	
Orange	2.04	16.91	
Red	-	-	
No data coverage	15.14	-	

Note: Exposure to investee companies represents 99.41% of portfolio weight for this share class. MSCI only provides data on ESG controversies for corporate issuers. Any remaining instruments (e.g., government bonds) are excluded from this breakdown. For further information on MSCI's ESG controversy flag methodology, please refer to the glossary.

⁶ The individual entities and/or instruments mentioned on this page are meant for illustration purposes only and are not intended as a solicitation or an offer to buy or sell any interest or any investment.

Glossary

Accumulating	Indicates a regular reinvestment of the dividends received in the portfolio itself
Annualized Risk	Annualized risk is a statistic, which is used to measure the risk of a fund by describing the range of returns, which were achieved in the observation period are most likely to be achieved. Greater volatility implies greater risk.
Beta	A measure of the volatility, or systematic risk, of a single security or fund in comparison to the market as a whole.
Carbon emission intensity	The weighted average emissions intensity, which is provided by MSCI ESG, divides the Scopes 1 & 2 emissions in tons of CO ₂ -equivalent by million \$ sales. Intensities are broken down by GICS sector and are security weighted.
ESG benchmark	A ticked 'ESG benchmark' box reflects that the ESG section in this document compares the ESG performance of the portfolio with an ESG index. In case the box is not ticked, this means that the ESG section in this document compares the ESG performance of the portfolio with a non-ESG index or that no comparison is performed due to a lack of a recognized benchmark. The investor shall read the legal documentation of the Fund to understand how the benchmark is used. In any case, a ticked 'ESG benchmark' box does not mean that the ESG benchmark is used to attain the ESG strategy of the fund.
ESG Controversy Flag	ESG Controversy Flag is designed to provide timely and consistent assessments of ESG controversies involving publicly traded companies and fixed income issuers. A controversy case is typically a one-off event such as an environmental oil spill, an accident, or allegations such as safety issues in a production facility. Controversy flags can be red, orange, yellow or green. Red indicates that a company is involved in one or more very severe controversies. Orange indicates that a company has been involved in one or more recent severe structural controversies that are ongoing. Yellow indicates that the company is involved in severe-to-moderate level controversies. Green indicates that the company is not involved in any major controversies. For further information on the methodology, please refer to www.msci.com/our-solutions/esg-investing/ .
ESG Quality score	The ESG Quality score, based on MSCI ESG scores of underlyings, is measured on a scale from 0 (very poor) to 10 (very good). It does not correspond directly to the underlying Environment, Social and Governance Pillar scores. The Pillar scores are derived on an absolute basis, while the portfolio ESG Quality score is adjusted by MSCI to reflect the industry-specific level of ESG risk exposure. As Pillar scores are absolute, and the portfolio ESG Quality score is relative, the first cannot be averaged to derive the latter. The coverage rate is security weighted.
Issuer ESG Rating	Company and Government ESG Ratings, which are provided by MSCI ESG, are measured on a scale from AAA (highest rating) to CCC (lowest rating). Company ESG Ratings are based on the issuer's exposure to industry specific ESG risks and its ability to mitigate those risks relative to peers. Company ESG Ratings are calculated on an industry relative basis while the underlying individual E, S and G Ratings are absolute. Hence, the ESG Rating cannot be seen as an average of the individual E, S and G Ratings. Government ESG Ratings identify a country's exposure to and management of ESG risk factors and explain how these factors might impact the long-term sustainability of its economy. They are derived from 0-10 scores on underlying factors in the E, S and G pillars. For further information on the MSCI methodology, please refer to www.msci.com/our-solutions/esg-investing/ .
Ex post	Refers to metrics based on historical data
GICS	Global Industry Classification Standard
Greenhouse gas (GHG) emissions	Scope 1 emissions are generated by a company directly from owned or controlled sources such as the burning of fuels (stationary or mobile), industrial processes, etc. Scope 2 emissions are indirect emissions, primarily those associated with the electricity consumed by a company. Scope 3 emissions are all other indirect emissions associated with a company's operations, such as business travel, waste generated, and products both upstream (in the supply chain) and downstream (use of the products and end of life). Scope 3 emissions typically account for the largest proportion of a company's emissions.
Information ratio	This statistic measures how much a fund's out-performance may be attributed to manager skill as oppose to market movement. A high Information Ratio infers more manager skill than a low value would suggest.
ITD	Inception-to-date
Maximum drawdown	Represents the worst possible result (in percentage terms) that occurred during the period being analyzed.
MTD	Month-to-date
LuxFLAG ESG	For more information about the methodology and label validity, please visit luxflag.org . Validity: 01 January 2024 - 31 December 2024. Investors must not rely on this label with regard to investor protection issues and LuxFLAG does not incur any liability related to financial performance or default of the fund.
MSCI	MSCI refers to the external data provider MSCI ESG Research LLC and/or its affiliates.
MSCI ESG Methodology	For further information on the methodology applied to assess the ESG characteristics of the investments, please refer to www.msci.com/our-solutions/esg-investing/
NAV	Net Asset Value
Not ratable / No data coverage	Where MSCI considers an asset type for ESG analysis but data on an economic exposure is unavailable due to a lack of data from the data vendor, the investment falls under the category "No data coverage". Where MSCI considers an asset type out of scope for ESG analysis (e.g. Cash, Currency), the economic exposure falls under the category "Not ratable". For further information regarding excluded asset types, please refer to www.msci.com/our-solutions/esg-investing/ .
Ongoing Charges	The calculation of the ongoing charge is based on the Committee of European Securities Regulators/10-674 Directive. For a maximum of 12 months from fund fiscal year end and since inception, the ongoing charges figure is based on estimated expenses. After that, the ongoing charges correspond to the TER of the last annual report. It excludes performance fees and portfolio transaction costs, except in the case of an entry/exit charge paid by the fund when buying or selling shares/units in another collective investment undertaking.
Portfolio/Benchmark ESG Rating	Discrepancies may exist between the portfolio-level ESG Rating calculated by CSAM applying the MSCI methodology (provided in this factsheet) and the ESG Ratings displayed by other providers (e.g., MSCI ESG fund ratings). There are three main reasons for these potential deviations: (1) CSAM uses updated month-end holdings data as basis for its calculation, (2) CSAM consistently uses underlying issuer data where applicable (e.g., equity issuer in case of a convertible bond), and (3) look-through approach for target funds applied by CSAM. The coverage rate is security weighted. For further information on the MSCI methodology, please refer to www.msci.com/oursolutions/esg-investing/ .
QTD	Quarter-to-date
Sustainable Finance Disclosure Regulation (SFDR)	Regulation (EU) 2019/2088 of the European Parliament and of the Council of 27 November 2019 on sustainability-related disclosures in the financial services sector
Sustainable investment objective	Where the 'sustainable investment objective' box is ticked, this means that the product implements CSAM investment strategies that allocate capital into companies that offer solutions to society's challenges and meet a sustainable investment objective. The sustainable investment objective is achieved through a dedicated investment process focusing on investments in themes and sectors whose economic activities address specific ESG challenges. An unticked box reflects that the product does not aim to meet a sustainable investment objective.
Sustainable thematic	This product undertakes investments that are dedicated to addressing the United Nations Sustainable Development Goals (e.g. education or clean energy) through a thematic approach.
TNA	Total Net Assets
Tracking error	Measure of the deviation of the return of a fund compared to the return of a benchmark over a fixed period of time.
YTD	Year-to-date

Warning statements

Asset breakdown	Indicative allocation may change over time. All holdings are shown strictly for information purposes only and do not constitute investment recommendations of Credit Suisse. Please note that this does not constitute an offer or a solicitation to buy or sell any interest or any investment.
Swinging Single Pricing	For more details, please refer to the relevant chapter "Net Asset Value" of the fund's prospectus
Performance start date	Performance calculation and presentation start with the first full month of an invested strategy. This can lead to a difference in launch and performance start dates.
PRIIP SRI	The Summary Risk Indicator is a guide to the level of risk of this Product compared to other products. It shows how likely it is that the Product will lose money because of movements in the markets.

ESG Notes

The figures contained in this section are not audited. Where ESG related information, statements and scorings are made in this document, CS may have, partially or entirely, relied on publicly available information, internally developed data and/or information obtained from other third-party sources which CS believes to be reliable. CS' ability to verify such ESG objectives may be limited by the reliability of the data available in respect of the underlying assets and the status of the regulations in relation to tracking and providing such data. CS has not independently verified any information obtained from these public and third-party sources and cannot make any representations or warranties as to its accuracy, completeness or reliability. It is possible that the data from ESG data providers may be incorrect, unavailable, or not fully updated. This is especially true where CS has limited access to data from external parties regarding the underlying elements of an investment, for example due to a lack of look-through data. Such data gaps could result in an incorrect assessment of a sustainability practice and/or related sustainability risks and opportunities. Investors shall not use the ESG data provided in this document for the sake of meeting their own regulatory disclosure or reporting requirements. CS cannot make any guarantee about the content or completeness of such ESG disclosures, which remain subject to change and cannot be relied upon. In particular, CS shall not be liable for any errors or omissions in connection with any ESG data herein, or for any direct, indirect, special, punitive, consequential or any other damages (including lost profits). In the absence of a standardized, industry-wide ESG classification system, CS has developed its own ESG framework (the "CS Sustainable Investment Framework"). Therefore, investors should note that the ESG classification of the fund reflects CS' opinion and is based on the CS Sustainable Investment Framework which classification may vary from the classification made by third parties. The fact that a fund follows the CS Sustainable Investment Framework does not necessarily mean that it meets the investors overall investment objectives, nor their sustainability preferences. Given that sustainability regulations and guidelines are still developing, CS may need to review certain ESG classifications/descriptions as industry practices change and as more regulatory guidance becomes available. The ESG-performance of a portfolio might also differ from its financial performance and CS cannot make any representation as to the correlation between financial and ESG performance. Sustainability-related practices also differ by region, industry and ESG issue and are continually evolving. Consequently, sustainability-related practices may change over time. Similarly, new local sustainability requirements may result in additional compliance costs, disclosure obligations or other restrictions on the fund. CS' view on the appropriate classification may also evolve over time, including in response to regulatory guidance or changes in industry approach to classification.

Want to learn more?

Visit: <https://credit-suisse.com/fundsearch>

Important information

Source: Credit Suisse, unless otherwise specified

MSCI information was used herein; ©2024 MSCI and/or its affiliates. Used with permission all rights reserved; see msci.com/disclaimer.

This material constitutes marketing material of Credit Suisse AG and/or its affiliates (hereafter "CS").

This material does not constitute or form part of an offer or invitation to issue or sell, or of a solicitation of an offer to subscribe or buy, any securities or other financial instruments, or enter into any other financial transaction, nor does it constitute an inducement or incitement to participate in any product, offering or investment.

This marketing material is not a contractually binding document or an information document required by any legislative provision.

Nothing in this material constitutes investment research or investment advice and may not be relied upon. It is not tailored to your individual circumstances, or otherwise constitutes a personal recommendation, and is not sufficient to take an investment decision.

The information and views expressed herein are those of CS at the time of writing and are subject to change at any time without notice. They are derived from sources believed to be reliable.

CS provides no guarantee with regard to the content and completeness of the information and where legally possible does not accept any liability for losses that might arise from making use of the information. If nothing is indicated to the contrary, all figures are unaudited. The information provided herein is for the exclusive use of the recipient.

The information provided in this material may change after the date of this material without notice and CS has no obligation to update the information.

This material may contain information that is licensed and/or protected under intellectual property rights of the licensors and property right holders. Nothing in this material shall be construed to impose any liability on the licensors or property right holders. Unauthorised copying of the information of the licensors or property right holders is strictly prohibited.

The full offering documentation including, the prospectus or offering memorandum, the Key Investor Information Document (KIID), the Key Information Document (KID), the fund rules, as well as the annual and bi-annual reports ("Full offering documentation"), as the case may be, may be obtained free of charge in one of the languages listed below from the legal entity/entities indicated below and where available via FundSearch (credit-suisse.com/fundsearch).

Information on your local distributors, representatives, information agent, paying agent, if any, and your local contacts in respect of the investment product(s) can be found below.

The only legally binding terms of any investment product described in this material, including risk considerations, objectives, charges and expenses are set forth in the prospectus, offering memorandum, subscription documents, fund contract and/or any other fund governing documents.

For a full description of the features of the products mentioned in this material as well as a full description of the opportunities, risks, and costs associated with the respective products, please refer to the relevant underlying securities prospectuses, sales prospectuses, or other additional product documents, which we will be pleased to provide to you at any time upon request.

The investment promoted in this marketing material concerns the acquisition of units or shares in a fund and not of any underlying assets. The underlying assets are owned by the fund only.

This material may not be forwarded or distributed to any other person and may not be reproduced. Any forwarding, distribution or reproduction is unauthorized and may result in a violation of the U.S. Securities Act of 1933, as amended (the "Securities Act"). The securities referred to herein have not been, and will not be, registered under the Securities Act, or the securities laws of any states of the United States and, subject to certain exceptions, the securities may not be offered, pledged, sold or otherwise transferred within the United States or to, or for the benefit or account of, U.S. persons.

In addition, there may be conflicts of interest with regard to the investment.

In connection with the provision of services, Credit Suisse AG and/or its affiliates may pay third parties or receive from third parties, as part of their fee or otherwise, a one-time or recurring fee (e.g., issuing commissions, placement commissions or trailer fees).

Prospective investors should independently and carefully assess (with their tax, legal and financial advisers) the specific risks described in available materials, and applicable legal, regulatory, credit, tax and accounting consequences prior to making any investment decision.

The alternative investment fund manager or the (UCITS) management company, as applicable, may decide to terminate local arrangements for the marketing of the shares/units of a fund, including terminating registrations or notifications with the local supervisory authority.

A summary of investor rights for investing into European Economic Area domiciled investment funds managed or sponsored by Credit Suisse Asset Management can be obtained in English via www.credit-suisse.com/am/regulatory-information, local laws relating to investor rights may apply.

Luxembourg

Regulator / Supervisor legal entity: Commission de Surveillance du Secteur Financier (CSSF), 110 Route d'Arlon L-1150 Luxembourg, Tel: +352 2625 11, Fax: +352 2625 1, Website: www.cssf.lu

Distributor - if this material is distributed by: Credit Suisse Fund Management S.A., 5 rue Jean Monnet L-2180, Luxembourg

* Legal entity, from which the full offering documentation, the key investor information document (KIID), the fund rules, as well as the annual and bi-annual reports, if any, may be obtained free of charge.

Language versions available: English, German, French or Italian

Copyright © 2024 CREDIT SUISSE. All rights reserved.

AIMC Category Performance Report

Report as of 29/02/2024



Return statistics for Thailand Mutual Funds

AIMC Category	Average Trailing Return (%)							Average Calendar Year Return (%)				
	YTD	3M	6M	1Y	3Y	5Y	10Y	2019	2020	2021	2022	2023
Aggressive Allocation	-0.49	2.12	-6.17	-6.75	-1.06	-0.81	1.84	2.94	-3.71	17.78	-4.53	-7.42
ASEAN Equity	7.35	9.33	1.99	8.98	2.64	1.44	-5.64	-1.88	-0.64	24.80	-13.86	1.56
Asia Pacific Ex Japan	1.06	3.41	1.01	0.14	-10.01	0.81	2.50	9.46	22.91	1.18	-22.07	-0.41
Commodities Energy	5.68	-0.80	-7.89	1.68	12.70	5.97	-7.64	23.72	-31.41	65.84	13.47	-6.87
Commodities Precious Metals	-0.95	-0.48	3.52	8.36	3.37	7.26	2.64	11.37	22.38	-1.94	-0.75	9.13
Conservative Allocation	0.23	1.37	0.09	-0.55	-0.52	0.07	1.32	3.47	-1.01	3.30	-3.64	-0.77
Emerging Market	0.08	2.51	1.21	2.65	-10.38	-2.17	-0.26	14.48	9.34	-3.39	-24.38	4.34
Emerging Market Bond Discretionary F/X Hedge or Unhedge	2.45	4.32	5.93	1.85	-6.39	-1.90	-0.47	10.47	3.86	-4.60	-16.35	0.95
Energy	-1.10	-0.89	-6.02	-11.41	-3.01	-2.46	3.02	9.71	-6.55	10.38	4.80	-17.51
Equity General	-2.59	0.14	-10.54	-11.74	-1.09	-1.77	1.86	2.69	-9.61	19.03	1.13	-11.89
Equity Large Cap	-3.23	-0.44	-10.34	-9.57	-0.64	-2.65	1.84	1.31	-11.22	16.03	1.98	-9.68
Equity Small - Mid Cap	-1.57	1.83	-11.43	-14.10	0.60	4.04	6.11	3.76	8.03	41.13	-4.54	-13.32
European Equity	5.40	10.09	9.05	8.41	5.02	7.59	5.73	26.03	4.62	24.32	-19.18	12.78
Foreign Investment Allocation	1.50	4.82	4.31	5.10	-2.63	1.44	2.33	12.83	6.41	6.90	-17.03	5.10
Fund of Property Fund - Foreign	-4.32	1.72	-1.05	-6.15	-6.32	-2.76	1.47	18.33	-6.59	19.71	-25.78	0.76
Fund of Property Fund - Thai	-2.31	0.17	-4.09	-13.75	-2.44	-5.82	1.71	19.91	-22.42	-0.22	-6.52	-8.90
Fund of Property fund -Thai and Foreign	-3.75	1.04	-2.78	-8.56	-3.22	-2.96	3.47	21.25	-10.25	2.89	-11.27	-1.75
Global Bond Discretionary F/X Hedge or Unhedge	0.15	2.11	2.25	1.72	-2.39	-0.06	-1.00	5.14	3.62	1.13	-10.76	2.91
Global Bond Fully F/X Hedge	-1.05	1.73	1.94	1.18	-2.96	-0.21	0.49	7.70	4.32	0.11	-11.41	2.96
Global Equity	2.35	7.19	5.31	9.63	-2.17	6.18	2.79	20.02	19.50	12.50	-26.93	12.61
Greater China Equity	-1.91	-5.42	-12.23	-22.12	-22.47	-7.04	-1.23	21.91	19.36	-12.55	-27.20	-20.20
Health Care	3.48	11.13	3.76	5.32	-1.81	6.70	6.15	19.80	22.59	7.71	-19.54	-0.96
High Yield Bond	1.06	3.33	4.36	4.56	0.32	1.59	-	7.37	3.44	4.76	-11.58	5.39
India Equity	3.43	8.47	13.02	24.97	7.98	9.98	9.10	1.06	12.07	26.23	-12.85	16.93
Japan Equity	11.11	11.98	13.09	28.63	6.31	9.26	8.46	18.20	10.09	6.73	-10.31	20.35
Long Term General Bond	0.90	1.68	1.60	1.37	0.85	1.80	2.42	6.88	2.26	-0.26	-1.11	1.01
Mid Term General Bond	0.60	1.09	1.59	2.16	1.13	1.38	1.72	3.06	1.03	0.67	0.14	1.61
Mid Term Government Bond	0.54	0.96	1.25	1.45	0.52	0.84	1.23	2.52	1.40	-0.18	-0.06	0.81
Moderate Allocation	0.36	2.23	-0.78	-1.24	-0.69	-0.26	1.65	4.65	-3.46	7.56	-5.37	-1.48
Money Market General	0.34	0.49	0.96	1.65	0.78	0.80	1.04	1.27	0.55	0.20	0.38	1.43
Money Market Government	0.33	0.47	0.91	1.59	0.74	0.72	0.95	1.24	0.42	0.18	0.35	1.38
SET 50 Index Fund	-3.71	-1.20	-11.59	-11.23	-0.96	-3.17	1.67	4.22	-13.21	10.81	4.94	-11.29
Short Term General Bond	0.43	0.63	1.16	1.81	0.97	0.96	1.22	1.81	0.49	0.42	0.55	1.53
Short Term Government Bond	0.35	0.47	0.89	1.48	0.68	0.68	0.92	1.12	0.50	-0.05	0.39	1.18
Technology Equity	6.15	16.68	20.13	37.70	-5.45	8.09	-	27.12	50.15	8.42	-43.73	47.90
Thai Free Hold	-0.21	0.17	0.02	3.07	2.08	1.36	4.00	0.99	-2.43	-0.63	3.30	2.56
Thai Mixed (between free and lease hold)	-0.90	-0.53	-1.38	-1.55	-0.76	0.47	2.99	5.03	3.19	-1.48	-4.43	-1.13
US Equity	5.93	11.80	12.25	25.21	1.31	8.33	8.75	23.64	20.70	22.20	-30.01	25.04
Vietnam Equity	11.37	12.88	2.25	20.97	1.29	3.79	-	-3.62	15.86	45.20	-32.85	7.81