

United All China Equity Fund (UCHINA-M)

UCHINA

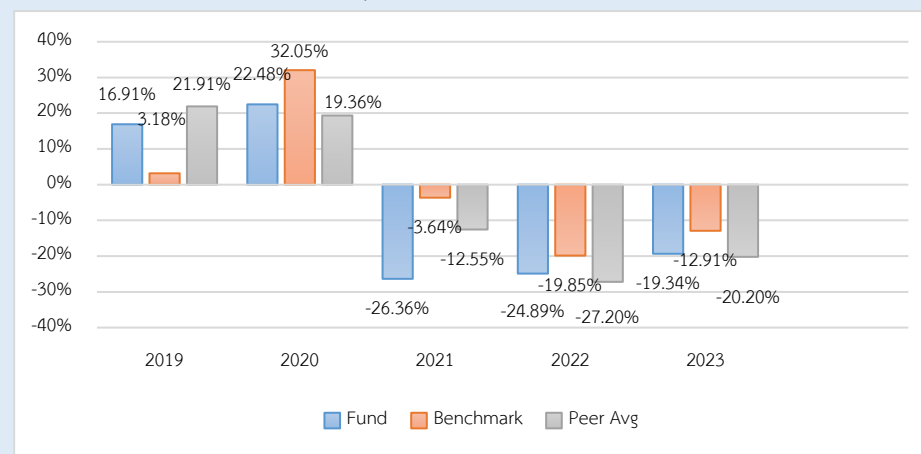
Fund Type / AIMC Category

- Equity Fund
- Fund of Funds / Fund with Foreign Investment related Risks
- Greater China Equity

Investment Policy and Strategy

- The Fund will mainly invest in UBS (Lux) Equity SICAV - All China (USD) I-A1-acc (Master Fund).
- The master fund is managed by UBS Fund Management (Luxembourg) S.A.
- The fund aims to achieve performance close to the Master Fund while the Master Fund aims to outperform the benchmark. (active management)

Calendar Year Performance (% p.a.)



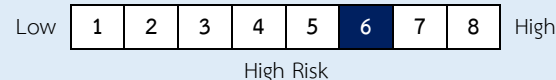
Fund Performance (%)

	YTD	3 Months	6 Months	1 Year*
Fund Return	-2.41	-7.57	-11.24	-20.83
Benchmark Return	3.76	-1.89	-5.39	-13.77
Peer Average	-1.91	-5.42	-12.23	-22.12
Fund Standard Deviation	9.08	10.28	14.24	21.14
Benchmark Standard Deviation	8.98	10.25	13.27	19.40

	3 Years*	5 Years *	10 Years *	Since Inception *
Fund Return	-26.41	-9.06	-	-9.00
Benchmark Return	-13.96	-1.01	-	-1.00
Peer Average	-22.47	-7.04	-	-
Fund Standard Deviation	28.82	25.28	-	25.07
Benchmark Standard Deviation	19.79	19.06	-	18.90

Remark : * % p.a.

Risk Level



High Risk

Mainly invest in equity instruments at least 80% of NAV, in average, in any accounting year.

Fund Information

Registered Date	27 February 2019
Share Class Launch Date	27 February 2019
Dividend Policy	No dividend
Fund Duration	Indefinite

Fund Manager

Since	
Ms. Pornsajee Worasuttipisit	01 February 2023
Mr. Waroon Saptaweekul	18 September 2023

Benchmark

MSCI China All Shares Net Total Return Index (USD) which is a comparative index of The Master's fund performance adjusted by the exchange rate compare with Thai baht currency as at the date with return is calculated. (100%)

Remark:

- The Management Company uses such index as a benchmark for fund performance comparison.

Warning:

- Investment in Mutual Fund is not bank deposit.
- Past performance is not indicative of future results.

Prospectus



Investors should study Liquidity Risk Management Tools in the prospectus.

www.uobam.co.th

Subscription

Subscription date : Every business day
 Business hours : 08:30 a.m. - 03:30 p.m.
 Min. initial subscription : Indefinite
 Min. subsequent subscription : Indefinite

Redemption

Redemption date : Every business day
 Business hours : 08:30 a.m. - 03:30 p.m.
 Min. redemption : Indefinite
 Min. account balance : Indefinite
 Settlement period : T+4 is 4 working day
 from redemption order date

Remark:

Settlement Period: Business holidays abroad are not included.

Statistical Data

Maximum Drawdown	-65.62 %
Recovering Period	-
FX Hedging	92.92 %
Sharpe Ratio	-0.92
Alpha	-12.45
Beta	1.01
Portfolio Turnover Ratio	0.04

Fees charged to the Fund (% p.a. of NAV)

Fees	Max.	Actual
Management Fee	2.1400	1.6050
Total expenses	5.3500	1.8531

Remark:

- The Management Company may consider changing the actual fees charged to reflect strategy or administrative costs.
- All Fees include VAT, specific business taxes, and other taxes.

Fees charged to unitholders (% of trading value)

Fees	Max.	Actual
Front-end Fee	2.00	1.50
Back-end Fee	2.00	waived
Switching-in Fee	2.00	1.50
Switching-out Fee	2.00	waived
Transfer fee	10 Baht per 500 units or fraction of 500 units	waived

Remark:

- In case of switching in, the Management Company will not charge front-end fee.
- The Management Company may consider changing the actual fees charged to reflect strategy or administrative costs.
- The Management Company can charge fees differently to each group or each unitholder.
- All Fees include VAT, specific business taxes, and other taxes.

Asset Allocation

breakdown	% NAV
1. Unit Trust	99.96
2. Other Asset and Liability	0.04

Top 5 Holdings

holding	% NAV
1. UBS (Lux) Equity SICAV - All China (USD) I-A1-acc	99.96

Investment in the other funds more than 20% of NAV

Fund name : UBS (Lux) Equity SICAV - All China (USD) I-A1-acc

ISIN code : LU1867708205

Bloomberg code : UBAIA1A LX

Definition

Maximum Drawdown : The percentage of the fund's maximum loss in the past 5 years (or since the fund's inception if it is launched for less than 5 years) which is measured from the highest NAV per unit to the lowest NAV per unit during such period. Maximum Drawdown is an indicator of the risk of loss from investing in the fund.

Recovering Period : The length of time that the fund takes in recovering from the point of maximum loss to earning back the initial investment.

FX Hedging : The percentage of foreign currency investment with FX hedging.

Portfolio Turnover Ratio : The frequency of securities trading in the fund portfolio over a certain period, calculated by taking the lower value between the sum of the value of securities purchased and the sum of the value of securities sold of the fund in 1 year period divided by the average NAV in the same period. A fund with high Portfolio Turnover Ratio indicates frequent securities trading by fund manager resulting in high trading costs. Therefore, it is necessary to compare with the performance of the fund in order to assess the worthiness of such securities trading.

Sharpe Ratio : A ratio between the excess return of a fund and the risk of investment. The Sharpe ratio reveals the average investment return, minus the risk-free rate of return, divided by the standard deviation of returns for the fund. The Sharpe ratio reflects the extra return that should be received by the fund to compensate the amount of risk taken in investment. The fund with a higher Sharpe ratio is considered superior to other funds in terms of management efficiency since it provides higher excess return under the same risk level.

Alpha : The excess return of a fund relative to the return of a benchmark index. A fund with high alpha indicates that it is able to beat the performance of its corresponding benchmark which is a result of the capabilities of the fund manager in selecting appropriate securities for investment or making investment in a timely manner.

Beta : A measure of the degree and direction of volatility of the rate of return of assets in the investment portfolio of the fund compared to the changes in the overall market. A beta of less than 1.0 implies that the rate of return of the fund's assets is less volatile than that of the securities in the broader market whereas a beta of greater than 1.0 implies that the rate of return of the fund's assets is more volatile than that of the broader market.

Tracking Error : The efficiency of the fund to imitate its return to benchmark. Low Tracking Error means the fund is effective in generating return close to benchmark. High Tracking Error means the fund generates return more deviate from benchmark.

Yield to Maturity : The rate of return earned on a bond held to maturity, calculated from the interest expected to receive in the future over that bond duration and paid back principal discounted to the present value. It is used to measure return of fixed income funds by calculating the weighted average of Yield to Maturity of each bond that the fund invests. As Yield to Maturity has standard unit in percentage per annum, it can be used to compare the returns between fixed income funds that have an investment policy of holding bonds until maturity and similar investment characteristics.

“Important Notice: This Document has been translated from Thai. If there is any inconsistency or ambiguity between the English version and the Thai version, the Thai version shall prevail.”

UOB Asset Management (Thailand) Co., Ltd.
23A, 25th Floor, Asia Centre Building, 173/27-30, 31-33
South Sathon Road, Thungmahamek, Sathon,
Bangkok 10120, Thailand
Tel : +66 2786 2000
www.uobam.co.th

รายละเอียดและอันดับความน่าเชื่อถือของตราสารหนี้ ตราสารกึ่งหนี้กึ่งทุน หรือเงินฝากที่ลงทุนหรือมีไว้

กองทุนเปิด ยูไนเต็ด ออล ไซน่า อีควิตี้ ฟันด์

ณ วันที่ 29 กุมภาพันธ์ 2567

ผู้ออก/ผู้รับรอง/ผู้ค้ำประกัน	อันดับความน่าเชื่อถือ	มูลค่าตามราคาตลาด	%NAV
(ก) กลุ่มตราสารภาครัฐไทย และตราสารภาครัฐต่างประเทศ		0.00	0.00
(ข) กลุ่มตราสารของธนาคารที่มีกฎหมายเฉพาะจัดตั้งขึ้น ธนาคารพาณิชย์ หรือบริษัทเงินทุน เป็นผู้ออก ผู้ส่งจ่าย ผู้รับรอง		61,462,828.58	1.28
ธนาคารกสิกรไทย จำกัด (มหาชน)	AA+	61,462,828.58	1.28
(ค) กลุ่มตราสารที่มีอันดับความน่าเชื่อถืออยู่ในอันดับที่สามารถลงทุนได้		0.00	0.00
(ง) กลุ่มตราสารที่มีอันดับความน่าเชื่อถืออยู่ในอันดับต่ำกว่าอันดับที่สามารถลงทุนได้ หรือไม่ได้รับการจัดอันดับความน่าเชื่อถือ		0.00	0.00
	รวมทั้งหมด	61,462,828.58	

UBS All China Equity Fund USD I-A1-acc

Fund Fact Sheet

UBS Emerging Market Funds > Equities

Fund description

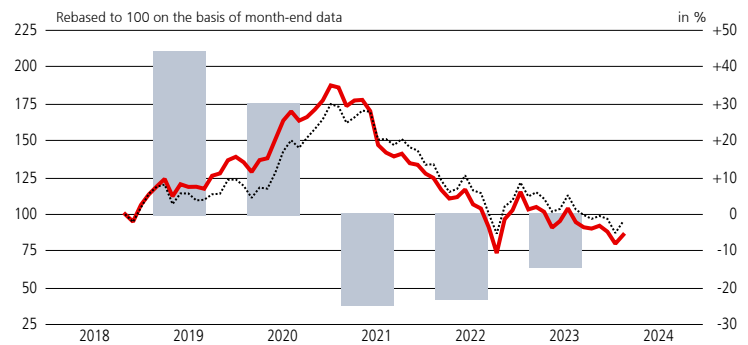
- Actively managed equity fund based on an equity portfolio investing in selected Chinese companies.
- The manager is given great flexibility to take focused views on the most attractive stocks and exploit the best opportunities, unconstrained by the reference index.
- Diversified across sectors offering broad coverage of the onshore and offshore Chinese equity market.
- The portfolio manager is not tied to the benchmark in terms of investment selection or weight.

Name of fund	UBS (Lux) Equity SICAV - All China (USD)
Share class	UBS (Lux) Equity SICAV - All China (USD) I-A1-acc
ISIN	LU1867708205
Securities no.	43 246 900
Bloomberg	UBAIA1A LX
Currency of fund / share class	USD/USD
Launch date	23.11.2018
Issue/redemption	daily
Swing pricing	yes
Accounting year end	31 May
Benchmark	MSCI China All-Share (net div. reinv.)
Distribution	Reinvestment
Management fee p.a.	0.990%
Flat fee p.a.	1.24%
Name of the Management Company	UBS Fund Management (Luxembourg) S.A., Luxembourg
Fund domicile	Luxembourg
SFDR Classification	Art.8

Fund Statistics

Net asset value (USD, 29.02.2024)	87.71
Last 12 months (USD) – high	110.32
– low	79.94
Total fund assets (USD m)	1 469.00
Share class assets (USD m)	243.48

Performance (basis USD, net of fees)¹



- Fund performance net of fees (left-hand scale)
- Fund performance per year in % net of fees (right-hand scale)
- Benchmark (left-hand scale)

Past performance is not a reliable indicator of future results.

in %	2021	2022	2023	2024 YTD ²	Feb. 2024	LTD ³	Ø p.a. 3 years	Ø p.a. 5 years
Fund (USD)	-24.69	-23.12	-14.21	-2.45	7.55	-12.29	-22.71	-5.40
Benchmark ⁴	-12.91	-23.61	-11.53	-1.69	9.17	-2.53	-18.06	-3.51

The performance shown does not take account of any commissions, entry or exit charges.

¹ These figures refer to the past. **If the currency of a financial product, financial service or its costs is different from your reference currency, the return and/or costs can increase or decrease as a result of currency fluctuations.** Source for all data and chart (if not indicated otherwise): UBS Asset Management.

² YTD: year-to-date (since beginning of the year)

³ LTD: launch-to-date

⁴ Reference Index in currency of share class (without costs)

in %	09.2023	10.2023	11.2023	12.2023	01.2024	02.2024
Fund (USD)	-3.67	-0.99	2.14	-4.38	-9.30	7.55
Benchmark	-3.62	-2.62	2.01	-1.98	-9.94	9.17

Key Figures

	2 years	3 years	5 years
Beta	1.16	1.13	1.06
Correlation	0.97	0.96	0.95
Volatility ¹			
– Fund	34.64%	29.54%	25.88%
– Benchmark	29.01%	25.10%	23.20%
Tracking error (ex post)	9.43%	8.74%	7.95%
Information ratio	-0.13%	-0.53%	-0.24%
Sharpe ratio	-0.60	-0.86	-0.29
Risk free rate	3.95%	2.68%	2.11%
R2	0.94	0.93	0.91

¹ Annualised standard deviation

For more information

UBS Fund Infoline: 0800 899 899
Internet: www.ubs.com/funds
Contact your client advisor

Portfolio management representatives

Bin Shi
Morris Wu
Denise Cheung

UBS All China Equity Fund USD I-A1-acc

Sector exposure (%)

	Fund	Benchmark
Communication Services	22.10	12.29
Financial Services	19.61	17.92
Health Care	14.44	6.49
Consumer Staples	13.58	8.73
Consumer Discretionary	12.75	20.15
Real estate	6.40	2.00
Others / Cash	4.77	0.00
Materials	3.01	6.29
Information Technology	1.91	9.80
Industrials	1.43	9.17
Energy	0.00	3.78
Utility	0.00	3.38

Market exposure (%)

	Fund
China offshore	76.05
China A onshore	19.18
Cash	4.77

Benefits

Easy access to investment opportunities provided by a rapidly growing Chinese economy. Investors gain access to all classes of shares, providing exposure to onshore and offshore China equities: A, B and H shares, Red chips, P chips and ADRs. Due to the significant deviation from the reference index, the fund offers the potential to outperform the reference index. Investors benefit from UBS being one of the few asset managers with a truly global investment platform. The experienced portfolio management team can leverage local investment expertise in the Chinese market via our joint venture UBS SDIC in China.

10 largest equity positions (%)¹

	Fund
Kweichow Moutai Co Ltd	9.9
Tencent Holdings Ltd	9.3
NetEase Inc	9.2
Alibaba Group Holding Ltd	5.2
China Merchants Bank Co Ltd	5.0
CSPC Pharmaceutical Group Ltd	4.6
Ping An Insurance Group Co of China Ltd	4.2
Far East Horizon Ltd	3.6
China Resources Land Ltd	2.9
Meituan	2.8

¹ This is not a recommendation to buy or sell any security

Risks

UBS Emerging Market Funds invest in equities and may therefore be subject to high fluctuations in value. As these UBS Funds pursue an active management style, each Fund's performance can deviate from that of its reference index. Investors should also be aware of the political and social challenges that emerging markets face. All investments are subject to market fluctuations. Every Fund has specific risks, which can significantly increase under unusual market conditions.

Please note that additional fees (e.g. entry or exit fees) may be charged. Please refer to your financial adviser for more details. Investors should read the Key Information Document, Prospectus and any applicable local offering document prior to investing and to get complete information of the risks. Investors are acquiring units or shares in a fund, and not in a given underlying asset such as building or shares of a company. For a definition of financial terms refer to the glossary available at www.ubs.com/am-glossary.

For marketing and information purposes by UBS. For professional clients / qualified investors only. UBS funds under Luxembourg law. Arrangements for marketing fund units mentioned in this document may be terminated at the initiative of the management company of the fund(s). Before investing in a product please read the latest prospectus and key information document carefully and thoroughly. Any decision to invest should take into account all the characteristics or objectives of the fund as described in its prospectus, or similar legal documentation. Investors are acquiring units or shares in a fund, and not in a given underlying asset such as building or shares of a company. The information and opinions contained in this document have been compiled or arrived at based upon information obtained from sources believed to be reliable and in good faith, but is not guaranteed as being accurate, nor is it a complete statement or summary of the securities, markets or developments referred to in the document. Members of the UBS Group may have a position in and may make a purchase and / or sale of any of the securities or other financial instruments mentioned in this document. Units of UBS funds mentioned herein may not be eligible for sale in all jurisdictions or to certain categories of investors and may not be offered, sold or delivered in the United States. The information mentioned herein is not intended to be construed as a solicitation or an offer to buy or sell any securities or related financial instruments. Past performance is not a reliable indicator of future results. The calculated performance takes all costs on the fund level into consideration (ongoing costs). The entry and exit costs, which would have a negative impact on the performance, are not taken into consideration. If whole or part of the total costs to be paid is different from your reference currency, the costs may increase or decrease as a result of currency and exchange rate fluctuations. Commissions and costs have a negative impact on the investment and on the expected returns. If the currency of a financial product or financial service is different from your reference currency, the return can increase or decrease as a result of currency and exchange rate fluctuations. This information pays no regard to the specific or future investment objectives, financial or tax situation or particular needs of any specific recipient. Future performance is subject to taxation which depends on the personal situation of each investor and which may change in the future. The details and opinions contained in this document are provided by UBS without any guarantee or warranty and are for the recipient's personal use and information purposes only. This document may not be reproduced, redistributed or republished for any purpose without the written permission of UBS Asset Management Switzerland AG or a local affiliated company. Source for all data and charts (if not indicated otherwise): UBS Asset Management. The product described herein aligns to Article 8 Regulation (EU) 2019/2088 on sustainability-related disclosures in the financial services sector. Information on sustainability-related aspects pursuant to that regulation can be found on www.ubs.com/funds. The benchmark is the intellectual property of the respective index provider. The fund or the share class is neither sponsored nor endorsed by the index provider. The fund prospectus or supplemental prospectus contains the full disclaimer. This document contains statements that constitute "forward-looking statements", including, but not limited to, statements relating to our future business development. While these forward-looking statements represent our judgments and future expectations concerning the development of our business, a number of risks, uncertainties and other important factors could cause actual developments and results to differ materially from our expectations. **Switzerland:** Representative in Switzerland for UBS funds established under foreign law: UBS Fund Management (Switzerland) AG, P.O. Box, CH-4002 Basel. Paying agent: UBS Switzerland AG, Bahnhofstrasse 45, CH-8001 Zurich. Prospectuses, key information document, the articles of association or the management regulations as well as annual and semi-annual reports of UBS funds are available in a language required by the local applicable law free of charge from UBS Asset Management Switzerland AG, c/o UBS AG, Bahnhofstrasse 45, 8001 Zürich, Switzerland or from UBS Fund Management (Switzerland) AG, P.O. Box, CH-4002 Basel. A summary of investor rights in English can be found online at www.ubs.com/funds. More explanations of financial terms can be found at www.ubs.com/am-glossary.

© UBS 2024. The key symbol and UBS are among the registered and unregistered trademarks of UBS. All rights reserved.

UBS All China Equity Fund USD

ESG Report

ESG is an abbreviation for Environmental, Social and Governance (factors). These factors are used to evaluate companies and countries on how advanced they are with respect to sustainability. Once sufficient data on these factors are available, they can be used to assess and compare assets and also to inform the investment process when deciding what assets to buy, hold or sell.

ESG Performance

The following illustrations show the fund's performance against sustainability criteria that are either explicitly part of the fund's ESG objectives or are included in the investment process.

UBS AM sustainability approaches applied

- | | | |
|---|---|--|
| <input checked="" type="checkbox"/> Exclusion | <input checked="" type="checkbox"/> ESG Integration | <input type="checkbox"/> SI Focus |
| <input type="checkbox"/> Impact | <input checked="" type="checkbox"/> Voting | <input checked="" type="checkbox"/> Engagement program |

Source: UBS Asset Management

ESG details of the top 10 equity positions

(in % of fund AuM)^{1,2}

Holding (equities)	Weight	ESG Score
Kweichow Moutai Co Ltd	9.9	2.7
Tencent Holdings Ltd	9.3	5.5
NetEase Inc	9.2	5.8
Alibaba Group Holding Ltd	5.2	4.1
China Merchants Bank Co Ltd	5.0	5.6
CSPC Pharmaceutical Group Ltd	4.6	5.6
Ping An Insurance Group Co of China Ltd	4.2	6.1
Far East Horizon Ltd	3.6	5.0
China Resources Land Ltd	2.9	5.6
Meituan	2.8	4.5

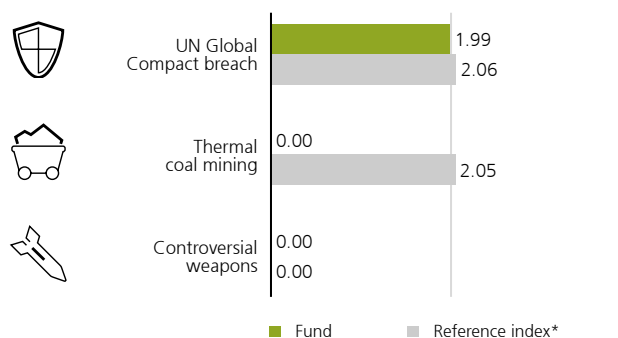
¹ This is not a recommendation to buy or sell any security

² AuM = Assets under Management

Source: UBS AG

Controversy check

(in % of fund AuM)^{1,2}



¹ The fund excludes issuers identified as violating the UN Global Compact principles without credible corrective action

² AuM = Assets under Management

Source: MSCI ESG Research

Reference Index: MSCI China All-Share (net div. reinv.)

UBS All China Equity Fund USD

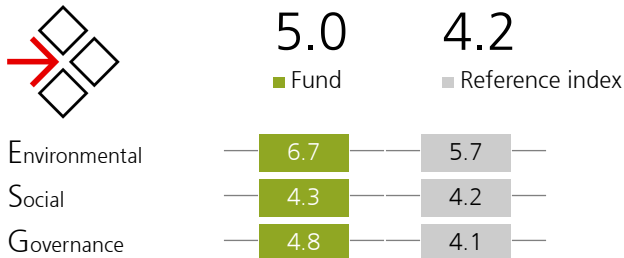
ESG Report

ESG Transparency

This page provides transparency on key sustainability metrics that may be of interest to investors but are not part of the fund's investment process. The following metrics inform investors more broadly on their exposure to selected ESG topics.

MSCI ESG scores, scaled

(holding-weighted average 0-10)



Fund actual data coverage: 90%

Reference index actual data coverage: 100%

Source: MSCI ESG Research

Reference Index: MSCI China All-Share (net div. reinv.)

External fund ratings¹



¹ As of 30.04.2023

Source: MSCI ESG Research, Morningstar

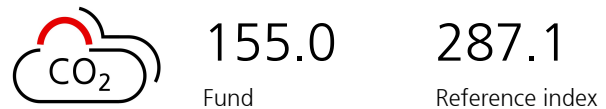
Morningstar Sustainability Rating™



As of 31.10.2023

Weighted average carbon intensity, scaled - Corporate issuers

(tCO₂ equivalent per USD million sales)¹



Fund actual data coverage: 98%

Reference index actual data coverage: 100%

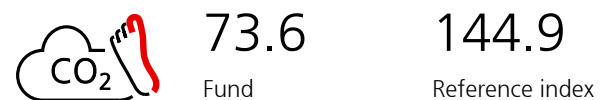
¹ The fund maintains a lower weighted average carbon intensity (WACI) profile than the reference index and/or a low absolute profile

Source: MSCI ESG Research

Reference Index: MSCI China All-Share (net div. reinv.)

Carbon footprint, scaled - Corporate issuers

(tCO₂ equivalent per USD million invested)



Fund actual data coverage: 98%

Reference index actual data coverage: 100%

Source: MSCI ESG Research

Reference Index: MSCI China All-Share (net div. reinv.)

Glossary

Carbon Footprint: Expresses the greenhouse gas footprint of an investment sum. The carbon emissions scope 1 and 2 are allocated to investors based on an enterprise value (with inclusion of cash) ownership approach and normalized by the current fund value. The Carbon Footprint is a normalized measure of a fund's contribution to climate change that enables comparison with a benchmark, between funds and between individual investments. Metric is Total Carbon Emissions expressed as per currency invested.

The metric is scaled up to 100% if actual data coverage is above the defined thresholds - Fixed Income: 50%; Equities: 66%, Multi-Asset: 50%. Otherwise, the metric is reported as -.

Classification system to separate corporate and sovereign issuers: Bloomberg Barclays Methodology. Securitized bonds excluded from the calculation. "No exposure" in case the fund is not invested in the respective issuers for the month.

Controversy check: Controversial Business Involvement exposure is the exposure to companies with a revenue share exceeding a certain threshold of the respective field (production). Link to our exclusion policy for more details: -> www.ubs.com/si-exclusion-policy

ESG Score (UBS ESG Consensus Score): The UBS ESG Consensus Score is based on UBS-internal and independent external ESG data sources. The UBS ESG Consensus Score is industry-adjusted and is measured on a scale from 0 (lowest/worst score) to 10 (highest/best score).

The metric is scaled up to 100% if actual data coverage is above the defined thresholds- Fixed Income: 50%; Equities: 66%, Multi-Asset: 50%. Otherwise, the metric is reported as -.

Classification system to separate corporate and sovereign issuers: Bloomberg Barclays Methodology. Securitized bonds excluded from the calculation. "No exposure" in case the fund is not invested in the respective issuers for the month.

MSCI ESG scores are provided by MSCI ESG Research and are measured on a scale from 0 (lowest/worst score) to 10 (highest/best score). The score is based on the underlying company's exposure to industry specific ESG risks and their ability to mitigate those risks relative to their peers. ESG scores are also shown a breakdown of the E, S and G scores, in reference to the different components that are considered for the Environmental, Social and Government pillars. The components are also rated on a scale of 0-10. Based on the individual E, S and G values, a weighted average can be calculated. This is dynamic and takes into account the direct changes of all underlying results, which affect the individual E, S and G values. The ESG Score measures the most financially significant environmental, social and governance risks and opportunities of companies. In addition, sectoral differences are taken into account through key industry specific ESG issues. This makes the ESG score a rather static measure, as the relative valuation of a sector remains constant over a longer period of time.

The metric is scaled up to 100% if actual data coverage is

UBS All China Equity Fund USD

ESG Report

above the defined thresholds - Fixed Income: 50%; Equities: 66%, Multi-Asset: 50%. Otherwise, the metric is reported as -.

UBS AM sustainability approaches applied:

Exclusion: Strategies that exclude securities from funds where they are not aligned to an investor's values. Includes customized screening criteria.

ESG Integration: Strategies that integrate environmental, social and governance (ESG) factors into fundamental financial analysis to improve risk/return profile.

SI Focus: Strategies where sustainability is an explicit part of the investment guidelines, universe, selection and/or investment process

Impact: Strategies where the intention is to generate measurable environmental and/or social benefits ("impact") alongside the financial return.

Voting: The Voting flag is a principle-based product level classification (top down) and is based on the overall applicability of the UBS AM Policies. UBS will actively exercise voting rights based on the principles outlined in the UBS Asset Management Proxy Voting policy and UBS Asset Management Stewardship policy, with two fundamental objectives: 1. To act in the best financial interests of our clients to enhance the long-term value of their investments. 2. To promote best practice in the boardroom and encourage strong sustainability practices. This is not an indication that voting on sustainability related topics has taken place with respect to companies held by a sub-fund during any given time period. For information about voting activities with specific companies (bottom-up transparency) please refer to the UBS Asset Management Stewardship Annual Report. Information shown in this report might also deviate from other reports which might only focus on, for example, climate related activities.

<https://www.ubs.com/global/en/assetmanagement/capabilities/sustainable-investing/stewardship-engagement.html>

Engagement program: The engagement program applies to UBS funds and aims to prioritize/select companies where UBS Asset Management has identified concerns or thematic topics on particular ESG factors. These companies are selected from across the universe of companies in which UBS Asset Management invests using a top-down approach in accordance with our principles, as outlined in the Global Stewardship Policy. The prioritization process will determine if and when engagement with a company is required. If a company is selected for the engagement program, the engagement dialog will be conducted for a minimum period of two years.

This is not an indication that sustainability related engagement has taken place with respect to companies in this portfolio during any given time period or that the companies in this portfolio were chosen with the goal to actively engage (bottom-up transparency). Information on UBS Asset Management's selection of companies, engagement activities, prioritization process and understanding of concerns can be found in the UBS Asset Management Stewardship Annual Report and Stewardship Policy. Information shown in this report might also deviate from other reports which might only focus on, for example, climate related activities.

<https://www.ubs.com/global/en/assetmanagement/capabilities/sustainable-investing/stewardship-engagement.html>

Aggregation of ESG/Carbon data: ESG scores of holdings in the portfolio and the reference index are aggregated based

on their respective individual weights and ESG scores (sum product).

Use of derivatives / fund of fund

investments: Derivatives and fund of fund investments used in the portfolio are treated on a lookthrough basis, whereby the economic exposures to the underlying basket of securities is treated as an actual investment in the individual securities that make up this basket. This might in the case of broad market derivatives or fund of fund investments lead to minimal exposures to securities that are excluded from direct investments.

Derivatives have an effect on all metric calculations and as many of the reporting frameworks available to investors today do not cover the intricacies of derivatives, metrics are provided on a reasonable efforts basis.

Portfolios for which we report the sustainability metrics may include cash.

The information disclosed in this report, in particular treatment of derivatives and cash, may or may not correspond with investment characteristics of the fund and how the fund is managed. Therefore, sustainability metrics in this report may differ from other UBS reports produced on the same date.

MSCI ESG Fund Ratings** are designed to measure the Environmental, Social and Governance (ESG) characteristics of a fund's underlying holdings, making it possible to rank or screen mutual funds and ETFs on a AAA to CCC ratings scale. MSCI leverage MSCI ESG Ratings for over 10,500 companies (19,500 total issuers including subsidiaries) and more than 760,000 equity and fixed-income securities globally to create ESG scores and metrics for approximately 56,000 multi-asset class Mutual funds and ETFs globally (as of January 17, 2022).

**MSCI ESG Research LLC's ("MSCI ESG") fund metrics and ratings (the "Information") provide environmental, social and governance data with respect to underlying securities within more than 56,000 multi-asset class Mutual funds and ETFs globally (as of January 17, 2022). MSCI ESG is a Registered Investment Adviser under the Investment Advisers Act of 1940. MSCI ESG materials have not been submitted to, nor received approval from, the US SEC or any other regulatory body. None of the Information constitutes an offer to buy or sell, or a promotion or recommendation of any security, financial instrument or product or trading strategy, nor should it be taken as an indication or guarantee of any future performance, analysis, forecast or prediction. None of the Information can be used to determine which securities to buy or sell or when to buy or sell them. The Information is provided "as is" and the user of the Information assumes the entire risk of any use it may make or permit to be made of the Information.

Weighted Average Carbon Intensity – Corporate issuers/ Carbon Intensity- Sovereign issuers:

These metrics measure a fund's exposure to carbon-intensive companies and governments. These metrics provide insight into potential risks related to the transition to a lower-carbon economy because companies with higher carbon intensity are likely to face more exposure to carbon related market and regulatory risks. These metrics are applicable across asset classes.

It's the sum product of the fund weights and individual carbon intensities (carbon emissions scope 1+2 / USDm sales or GDP).

The metric is scaled up to 100% if actual data coverage is above the defined thresholds - Fixed Income: 50%; Equities: 66%, Multi-Asset: 50%. Otherwise, the metric is reported as -.

Classification system to separate corporate and sovereign issuers: Bloomberg Barclays Methodology. Securitized bonds

UBS All China Equity Fund USD

ESG Report

excluded from the calculation. "No exposure" in case the fund is not invested in the respective issuers for the month.

Active ESG: Benchmark selection is driven by portfolio implementation considerations, in particular to closely reflect the financial objectives of the fund. For actively managed

strategies, generally a traditional benchmark is selected to provide a broad investment universe to which active management is applied. This enables an assessment of the magnitude of ESG improvements against the traditional benchmark, and allows the costs and benefits of investing sustainably to be assessed.

Important information about sustainable investing strategies

Sustainable investing strategies aim to consider and incorporate environmental, social and governance (ESG) factors into investment process and fund construction. Strategies across geographies and styles approach ESG analysis and incorporate the findings in a variety of ways. Incorporating ESG factors or sustainable investing considerations may inhibit UBS's ability to participate in or to advise on certain investment opportunities that otherwise would be consistent with the Client's investment objectives. The returns on a fund consisting primarily of sustainable investments may be lower or higher than funds where ESG factors, exclusions, or other sustainability issues are not considered by UBS, and the investment instruments available to such funds may differ. Companies, product issuers and/or manufacturers may not necessarily meet high performance standards on all aspects of ESG or sustainable investing issues.

Reconciliation of Assets under Management (AuM)

This report does not contain reconciled AuM positions, it only takes in consideration positions with settlement date as of report date. This means that traded but not settled positions are not included. Therefore, AuM figures in this report may differ from other UBS reports produced on the same date.

Although UBS Asset Management information providers, including without limitation, MSCI ESG Research LLC and its affiliates (the "ESG Parties"), obtain information from sources they consider reliable, none of the ESG Parties warrants or guarantees the originality, accuracy and/or completeness of any data herein. None of the ESG Parties makes any express or implied warranties of any kind, and the ESG Parties hereby expressly disclaim all warranties of merchantability and fitness for a particular purpose, with respect to any data herein. None of the ESG Parties shall have any liability for any errors or omissions in connection with any data herein. Further, without limiting any of the foregoing, in no event shall any of the ESG Parties have any liability for any direct, indirect, special, punitive, consequential or any other damages (including lost profits) even if notified of the possibility of such damages.

Certain information contained herein (the "Information") is sourced from/copyright of MSCI ESG Research LLC (a Registered Investment Adviser under the Investment Advisers Act of 1940), or its affiliates (including MSCI Inc. and its subsidiaries ("MSCI")), or third party suppliers (together with MSCI & MSCI ESG, the "ESG Parties") and may have been used to calculate scores, ratings or other indicators. It may not be reproduced or disseminated in whole or part without prior written permission. The Information has not been submitted to, nor received approval from, the US SEC or any other regulatory body. The Information may not be used to create any derivative works, or in connection with, nor does it constitute, an offer to buy or sell, or a promotion or recommendation of, any security, financial instrument or product, trading strategy, or index, nor should it be taken as an indication or guarantee of any future performance, analysis, forecast or prediction. Some funds may be based on or linked to MSCI indexes, and MSCI may be compensated based on the fund's assets under management or other measures. MSCI has established an information barrier between equity index research and certain Information. None of the Information in and of itself can be used to determine which securities to buy or sell or when to buy or sell them. The Information is provided "as is" and the user assumes the entire risk of any use it may make or permit to be made of the Information. No ESG Party warrants or guarantees the originality, accuracy and/or completeness of the Information and each expressly disclaims all express or implied warranties. No ESG Party shall have any liability for any errors or omissions in connection with any Information herein, or any liability for any direct, indirect, special, punitive, consequential or any other damages (including lost profits) even if notified of the possibility of such damages.

ปัจจัยความเสี่ยงของกองทุนรวม

1. ความเสี่ยงทางการตลาด (Market Risk)

คือความเสี่ยงจากความผันผวนของราคาหลักทรัพย์ที่กองทุนเข้าไปลงทุน ที่เกิดจากการเปลี่ยนแปลงในสถานะการณ์ทางเศรษฐกิจ สังคม และการเมือง ซึ่งเป็นความเสี่ยงที่ไม่สามารถควบคุมได้

แนวทางการบริหารเพื่อลดความเสี่ยง :

บริษัทจัดการจะวิเคราะห์ปัจจัยต่างๆรวมทั้งติดตามสถานการณ์การเปลี่ยนแปลงที่อาจมีผลกระทบต่อราคาและยังสามารถปรับสัดส่วนการลงทุนในกองทุนหลักได้ตามความเหมาะสม ซึ่งจะเป็นการช่วยลดผลกระทบต่อราคามูลค่าทรัพย์สินสุทธิของกองทุน

2. ความเสี่ยงจากการดำเนินธุรกิจของผู้ออกตราสาร (Business Risk)

ความสามารถในการดำเนินธุรกิจของผู้ออกตราสารดังกล่าว จะบ่งบอกถึงถึงศักยภาพ ความสามารถในการทำกำไร สถานะการเงิน และความเข้มแข็งขององค์กรธุรกิจ ซึ่งจะถูกละท้อนออกมาในราคาของหุ้นที่มีการขึ้นหรือลงในขณะนั้นๆ

แนวทางการบริหารความเสี่ยง :

กองทุนจะกระจายการลงทุนไปในบริษัทต่างๆ ทั้งที่อยู่ในกลุ่มธุรกิจเดียวกัน และกลุ่มธุรกิจอื่นๆ และผู้จัดการกองทุนจะทำการติดตามและศึกษาความเป็นไปของธุรกิจและอุตสาหกรรมต่างๆ อย่างใกล้ชิด ซึ่งจะช่วยให้ออกกองทุนสามารถบริหารความเสี่ยงได้ดียิ่งขึ้น โดยหากมีการเปลี่ยนแปลงผลการดำเนินงานหรือฐานะทางการเงินของบริษัทผู้ออกตราสารอย่างมีนัยสำคัญจะได้ พิจารณาปรับเปลี่ยนแผนการลงทุนในหลักทรัพย์อย่างเหมาะสม

3. ความเสี่ยงจากอัตราแลกเปลี่ยน (Foreign Exchange Risk)

ความเสี่ยงที่การลงทุนอาจประสบกับความผันผวนของอัตราแลกเปลี่ยน ทำให้อัตราผลตอบแทนในรูปเงินบาทผันผวน หากค่าเงินตราสกุลต่างประเทศมีการเปลี่ยนแปลง

แนวทางการบริหารเพื่อลดความเสี่ยง :

กองทุนอาจใช้เครื่องมือป้องกันความเสี่ยงดังกล่าวโดยขึ้นอยู่กับดุลยพินิจของบริษัทจัดการ ซึ่งอาจมีต้นทุนสำหรับการทำธุรกรรมป้องกันความเสี่ยง โดยอาจทำให้ผลตอบแทนของกองทุนโดยรวมลดลงจากต้นทุนที่เพิ่มขึ้น

4. ความเสี่ยงของประเทศที่ลงทุน (Country Risk)

คือ ความเสี่ยงที่เกิดจากการเปลี่ยนแปลงภายในประเทศที่กองทุนเข้าไปลงทุน เช่น การเปลี่ยนแปลงผู้บริหาร, การเปลี่ยนแปลงนโยบายทางด้านเศรษฐกิจ หรือสาเหตุอื่นๆ จนทำให้ไม่สามารถชำระค่าขายคืนหน่วยลงทุนได้ตรงตามระยะเวลาที่กำหนด

แนวทางการบริหารเพื่อลดความเสี่ยง:

บริษัทจัดการจะวิเคราะห์ปัจจัยต่างๆรวมทั้งติดตามสถานการณ์การเปลี่ยนแปลงที่อาจมีผลกระทบต่อราคาและยังสามารถปรับสัดส่วนการลงทุนในกองทุนหลักได้ตามความเหมาะสม ซึ่งจะเป็นการช่วยลดผลกระทบต่อราคามูลค่าทรัพย์สินสุทธิของกองทุน

5. ความเสี่ยงจากการลงทุนในสัญญาซื้อขายล่วงหน้า (Derivatives Risk)

สัญญาซื้อขายล่วงหน้าบางประเภทอาจมีการขึ้นลงผันผวน (Volatile) มากกว่าหลักทรัพย์พื้นฐาน ดังนั้นหากกองทุนมีการลงทุนในหลักทรัพย์ดังกล่าวย่อมทำให้สินทรัพย์มีความผันผวนมากกว่าการลงทุนในหลักทรัพย์พื้นฐาน (Underlying Security)

แนวทางการบริหารเพื่อลดความเสี่ยง :

กองทุนอาจจะลงทุนในสัญญาซื้อขายล่วงหน้าที่มีตัวแปรเป็นอัตราแลกเปลี่ยน โดยมีวัตถุประสงค์เพื่อลดความเสี่ยงเท่านั้น ทั้งนี้การป้องกันความเสี่ยงดังกล่าวอาจทำให้กองทุนเสียโอกาสที่จะได้รับผลตอบแทนที่เพิ่มขึ้น หากอัตราแลกเปลี่ยนมีการเปลี่ยนแปลงไปในทางตรงข้ามกับที่กองทุนคาดการณ์ไว้ อย่างไรก็ตาม วัตถุประสงค์ของกองทุนยังคงมีความเสี่ยงจากการที่คู่สัญญาไม่ปฏิบัติตาม ดังนั้น เพื่อลดความเสี่ยงดังกล่าวกองทุนจะทำธุรกรรมกับธนาคารที่มีกฎหมายเฉพาะจัดตั้งขึ้นหรือธนาคารพาณิชย์

6. ความเสี่ยงจากข้อจำกัดการนำเงินลงทุนกลับประเทศ (Repatriation Risk) เป็นความเสี่ยงที่เกิดจากการเปลี่ยนแปลงภายในประเทศที่กองทุนลงทุน เช่น การเปลี่ยนแปลงทางการเมือง ข้อกำหนด กฎเกณฑ์ หรือนโยบายต่างๆ ของรัฐบาลในการบริหารประเทศ ซึ่งรวมถึงสาเหตุอื่นๆ ที่อาจทำให้ไม่สามารถชำระหนี้ได้ตรงตามระยะเวลาที่กำหนด รวมถึงอาจทำให้กองทุนเกิดความเสียหายจากสัญญา Swap และ/หรือสัญญาฟอเวิร์ดได้ ซึ่งมีผลกระทบต่อผลตอบแทนที่กองทุนจะได้รับจากการลงทุน

แนวทางการบริหารเพื่อลดความเสี่ยง :

บริษัทจัดการจะติดตามสถานการณ์การเปลี่ยนแปลงการเมือง ภาวะเศรษฐกิจ ภาวะตลาดเงิน ตลาดทุน ตลอดจนปัจจัยพื้นฐานต่างๆ ของประเทศที่กองทุนลงทุนอย่างใกล้ชิด เพื่อประเมินความเสี่ยงจากการลงทุนในประเทศนั้นๆ เพื่อลดความเสี่ยงในส่วนนี้

7. ความเสี่ยงจากการขาดสภาพคล่องของตราสาร (Liquidity Risk)

ซึ่งเกิดขึ้นจากการที่กองทุนไม่สามารถจำหน่ายหลักทรัพย์ที่ลงทุนได้ในราคาที่เหมาะสมและภายในระยะเวลาอันสมควร หรือตลาดหลักทรัพย์ที่กองทุนทำการซื้อขายหลักทรัพย์อาจจะหยุดรับคำสั่งซื้อขายเนื่องจากสภาวะตลาดในขณะนั้น ความเสี่ยงข้างต้นอาจส่งผลกระทบต่อมูลค่าหน่วยลงทุน

แนวทางการบริหารเพื่อลดความเสี่ยง :

กองทุนสามารถลดความเสี่ยงด้านสภาพคล่องได้โดยพิจารณาเลือกลงทุนในกองทุนหรือตลาดหลักทรัพย์ที่มีสภาพคล่อง และมีเงื่อนไขการซื้อขายหน่วยลงทุนที่สอดคล้องหรือเอื้อกับการซื้อขายหน่วยลงทุนของกองทุนแนวทางการบริหารความเสี่ยงการที่กองทุนอาจพิจารณาลงทุนในเงินฝากหรือตราสารแห่งหนึ่งที่มีลักษณะคล้ายเงินฝากหรือตราสารหนี้ระยะสั้น เพื่อรักษาสภาพคล่องของกองทุนและลดความเสี่ยงจากการรับชำระคืน จึงทำให้ช่วยลดความเสี่ยงด้านสภาพคล่องของหลักทรัพย์ที่กองทุนลงทุนได้

AIMC Category Performance Report

Report as of 29/02/2024



Return statistics for Thailand Mutual Funds

AIMC Category	Average Trailing Return (%)							Average Calendar Year Return (%)				
	YTD	3M	6M	1Y	3Y	5Y	10Y	2019	2020	2021	2022	2023
Aggressive Allocation	-0.49	2.12	-6.17	-6.75	-1.06	-0.81	1.84	2.94	-3.71	17.78	-4.53	-7.42
ASEAN Equity	7.35	9.33	1.99	8.98	2.64	1.44	-5.64	-1.88	-0.64	24.80	-13.86	1.56
Asia Pacific Ex Japan	1.06	3.41	1.01	0.14	-10.01	0.81	2.50	9.46	22.91	1.18	-22.07	-0.41
Commodities Energy	5.68	-0.80	-7.89	1.68	12.70	5.97	-7.64	23.72	-31.41	65.84	13.47	-6.87
Commodities Precious Metals	-0.95	-0.48	3.52	8.36	3.37	7.26	2.64	11.37	22.38	-1.94	-0.75	9.13
Conservative Allocation	0.23	1.37	0.09	-0.55	-0.52	0.07	1.32	3.47	-1.01	3.30	-3.64	-0.77
Emerging Market	0.08	2.51	1.21	2.65	-10.38	-2.17	-0.26	14.48	9.34	-3.39	-24.38	4.34
Emerging Market Bond Discretionary F/X Hedge or Unhedge	2.45	4.32	5.93	1.85	-6.39	-1.90	-0.47	10.47	3.86	-4.60	-16.35	0.95
Energy	-1.10	-0.89	-6.02	-11.41	-3.01	-2.46	3.02	9.71	-6.55	10.38	4.80	-17.51
Equity General	-2.59	0.14	-10.54	-11.74	-1.09	-1.77	1.86	2.69	-9.61	19.03	1.13	-11.89
Equity Large Cap	-3.23	-0.44	-10.34	-9.57	-0.64	-2.65	1.84	1.31	-11.22	16.03	1.98	-9.68
Equity Small - Mid Cap	-1.57	1.83	-11.43	-14.10	0.60	4.04	6.11	3.76	8.03	41.13	-4.54	-13.32
European Equity	5.40	10.09	9.05	8.41	5.02	7.59	5.73	26.03	4.62	24.32	-19.18	12.78
Foreign Investment Allocation	1.50	4.82	4.31	5.10	-2.63	1.44	2.33	12.83	6.41	6.90	-17.03	5.10
Fund of Property Fund - Foreign	-4.32	1.72	-1.05	-6.15	-6.32	-2.76	1.47	18.33	-6.59	19.71	-25.78	0.76
Fund of Property Fund - Thai	-2.31	0.17	-4.09	-13.75	-2.44	-5.82	1.71	19.91	-22.42	-0.22	-6.52	-8.90
Fund of Property fund -Thai and Foreign	-3.75	1.04	-2.78	-8.56	-3.22	-2.96	3.47	21.25	-10.25	2.89	-11.27	-1.75
Global Bond Discretionary F/X Hedge or Unhedge	0.15	2.11	2.25	1.72	-2.39	-0.06	-1.00	5.14	3.62	1.13	-10.76	2.91
Global Bond Fully F/X Hedge	-1.05	1.73	1.94	1.18	-2.96	-0.21	0.49	7.70	4.32	0.11	-11.41	2.96
Global Equity	2.35	7.19	5.31	9.63	-2.17	6.18	2.79	20.02	19.50	12.50	-26.93	12.61
Greater China Equity	-1.91	-5.42	-12.23	-22.12	-22.47	-7.04	-1.23	21.91	19.36	-12.55	-27.20	-20.20
Health Care	3.48	11.13	3.76	5.32	-1.81	6.70	6.15	19.80	22.59	7.71	-19.54	-0.96
High Yield Bond	1.06	3.33	4.36	4.56	0.32	1.59	-	7.37	3.44	4.76	-11.58	5.39
India Equity	3.43	8.47	13.02	24.97	7.98	9.98	9.10	1.06	12.07	26.23	-12.85	16.93
Japan Equity	11.11	11.98	13.09	28.63	6.31	9.26	8.46	18.20	10.09	6.73	-10.31	20.35
Long Term General Bond	0.90	1.68	1.60	1.37	0.85	1.80	2.42	6.88	2.26	-0.26	-1.11	1.01
Mid Term General Bond	0.60	1.09	1.59	2.16	1.13	1.38	1.72	3.06	1.03	0.67	0.14	1.61
Mid Term Government Bond	0.54	0.96	1.25	1.45	0.52	0.84	1.23	2.52	1.40	-0.18	-0.06	0.81
Moderate Allocation	0.36	2.23	-0.78	-1.24	-0.69	-0.26	1.65	4.65	-3.46	7.56	-5.37	-1.48
Money Market General	0.34	0.49	0.96	1.65	0.78	0.80	1.04	1.27	0.55	0.20	0.38	1.43
Money Market Government	0.33	0.47	0.91	1.59	0.74	0.72	0.95	1.24	0.42	0.18	0.35	1.38
SET 50 Index Fund	-3.71	-1.20	-11.59	-11.23	-0.96	-3.17	1.67	4.22	-13.21	10.81	4.94	-11.29
Short Term General Bond	0.43	0.63	1.16	1.81	0.97	0.96	1.22	1.81	0.49	0.42	0.55	1.53
Short Term Government Bond	0.35	0.47	0.89	1.48	0.68	0.68	0.92	1.12	0.50	-0.05	0.39	1.18
Technology Equity	6.15	16.68	20.13	37.70	-5.45	8.09	-	27.12	50.15	8.42	-43.73	47.90
Thai Free Hold	-0.21	0.17	0.02	3.07	2.08	1.36	4.00	0.99	-2.43	-0.63	3.30	2.56
Thai Mixed (between free and lease hold)	-0.90	-0.53	-1.38	-1.55	-0.76	0.47	2.99	5.03	3.19	-1.48	-4.43	-1.13
US Equity	5.93	11.80	12.25	25.21	1.31	8.33	8.75	23.64	20.70	22.20	-30.01	25.04
Vietnam Equity	11.37	12.88	2.25	20.97	1.29	3.79	-	-3.62	15.86	45.20	-32.85	7.81